

VIS230-EL



ThinManager Configuration and Troubleshooting

As part of the extensive catalog of courses in Rockwell Automation's **Learning +** training series, we are pleased to announce **VIS230-EL, ThinManager Configuration and Troubleshooting**.



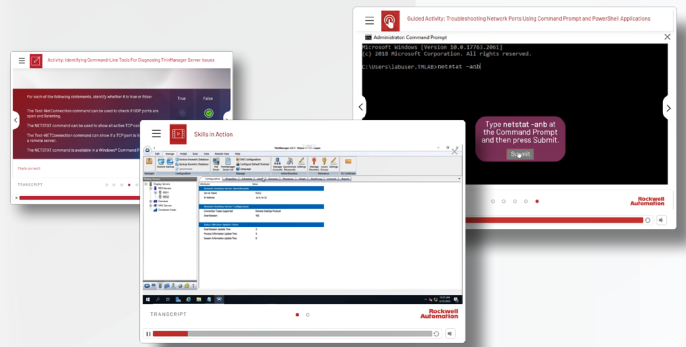
This technical course is truly engaging, encompassing:

- ✕ **In-depth Lectures**
- ✕ **Interactive Demonstrations**
- ✕ **Digital Quizzes**

All to help make sure the information you learn is engrained for future use in your next ThinManager® installation.

This is more than just an intro to what ThinManager is and can do for your production environment. We walk you through the “whys” and “hows” of a ThinManager install and even discuss recommended configuration strategies, all while giving examples and illustrations to help guide you to maximize the value of your ThinManager configuration and installation.

VIS230-EL can be found as part of the Visualization/HMI Courses in the e-learning catalogue. This 7 hour course is designed to provide basic knowledge to control, deploy, and manage terminal hardware and software in an industrial environment.



After completing this course, you will be able to complete the following tasks:

- ✕ Deploy and configure servers and hardware for a ThinManager system
- ✕ Manage and configure content delivered to terminals, users, and locations
- ✕ Troubleshoot ThinManager network and software issues
- ✕ Troubleshoot ThinManager terminal and Remote Desktop Services issues

Get Started Today at

[RockwellAutomation.com](https://www.rockwellautomation.com)

