



## Terminal Server Display Servers

Use the **F1** button on any page of a ThinManager wizard to launch Help for that page.

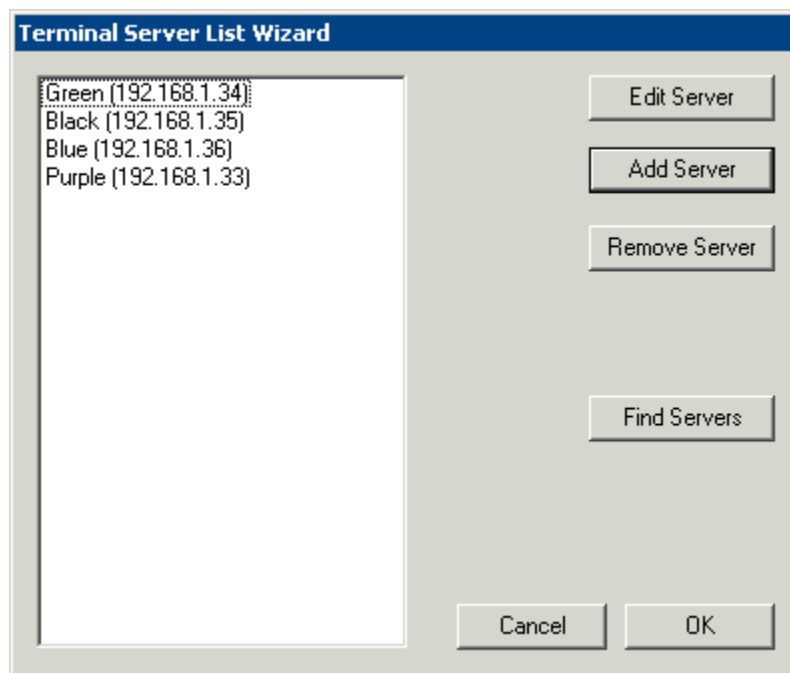
Visit [www.thinmanager.com/TechNotes4/01\\_Intro/Manuals.shtml](http://www.thinmanager.com/TechNotes4/01_Intro/Manuals.shtml) to download the manual, manual chapters, or the abridged ThinManual.

**Display Servers** are devices that provide content that can be displayed on the client. Examples include the traditional terminal server and IP cameras.

The Terminal Server List Wizard allows configuration of Terminal Services Display Servers. The Camera Configuration Wizard allows configuration of Camera Display Servers.

The **Terminal Server List Wizard** can be launched by:

- Right clicking on the Display Servers Terminal Servers branch and choosing the **Add Terminal Server** command
- Right clicking on the Display Servers Terminal Servers branch and choosing the **Edit Terminal Server** command.



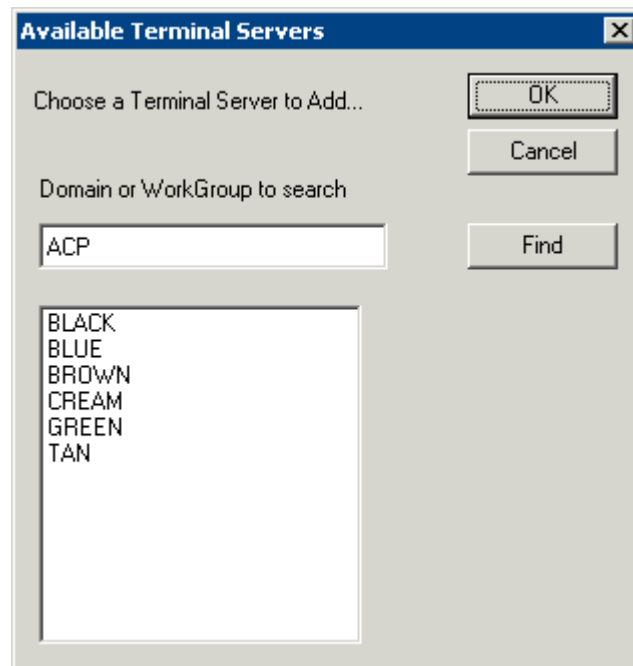
*Terminal Server List Wizard*

The **Terminal Server List Wizard** shows defined the terminal servers and allows you to add and edit them using the Add Server and Edit Server buttons.

The **Find Servers**-button will launch an **Available Terminal Servers** window that will automate the process by finding terminal servers on the network.



## Available Terminal Servers Search



*Available Terminal Server Window*

Select the **Find Servers**-button to launch an **Available Terminal Servers** window. This will display any Microsoft® terminal servers that are a member of the same domain or workgroup as ThinManager. Select the **Find** button to display the member servers.

Once the terminal servers are listed, highlight one and select the **OK** button to add it to the Terminal Server Configuration Wizard. This will launch the Introduction page of the **Terminal Server Wizard**.

### Terminal Server Wizard Introduction Page

Terminal Server List Wizard Introduction page displays introductory information.

### Terminal Server Name Page

The Terminal Server Name page defines the terminal server and allows the addition of an administrative user account for increased management.

- **Terminal Server Name** - Enter the computer name as found in the Microsoft® System Properties (NetBIOS name). The name will already be entered if the **Find** function on the **Available Terminal Servers** window was used.
- **Terminal Server IP** – Entered the IP address of the terminal server.
- **Discover** – The **Discover** button will automatically fill in the IP address for a terminal server listed in the **Terminal Server Name** field.
- **Login Information** – Enter a Windows user account with administrative rights for the terminal server if you wish to display data from the terminal server within ThinManager. This is required to populate the User, Sessions, and Process tabs of the details pane.
- **Schedule** – The **Schedule** button will launch the **Event Schedule** for the terminal server. This allows the scheduling of repeated functions like rebooting and disabling..

---

**Note:** It is highly recommended to enter an administrative account in the Login information fields. It increases the ability to manage sessions and is required for SmartSession.

---



### Terminal Server Capabilities Page

The Terminal Server Capabilities page has a setting that allows a terminal server to be used for SmartSession. It also defines what communication protocols, the default RDP and/or ICA, the server can use.

### Data Gathering Page

The Data Gathering page sets the frequency that ThinManager polls the terminal servers for user, session, and process information. Faster rates will lead to quicker updates but will add more network traffic. Slowing down the rate will cause less traffic but will slow the update rate a little.

### SmartSession Configuration Page

If the terminal server is used as a SmartSession server, the **Next** button will go to a SmartSession Configuration page. If this terminal server is not configured as a SmartSession server, the **Next** button will be grayed out and the **Finish** button will close the wizard.

ThinManager uses the **CPU utilization**, **Memory utilization**, and **number of sessions** on the terminal server to define the SmartSession terminal server's available resources. ThinManager uses these resource values to rank the load of the SmartSession servers. ThinManager supplies this load data to the terminals to allow the terminals to connect to the terminal server with the lightest load and greatest available resources.

The **SmartSession Configuration Page** allows SmartSession data to be tweaked. ThinManager will scale the range between the Minimum field and Maximum field as 100%.

Select **Finish** to save and close or **Cancel** to close without saving.