



Camera Display Server

Use the **F1** button on any page of a ThinManager wizard to launch Help for that page.

Visit www.thinmanager.com/TechNotes4/01_Intro/Manuals.shtml to download the manual, manual chapters, or the abridged ThinManual.

ThinManager 4 allows the use of IP cameras. You must first define the camera source as a Camera Display Server and then define how you want the camera video to be displayed as a Camera Display Client.

This article covers the Camera Display Server.

Camera Display Clients are covered in http://www.thinmanager.com/TechNotes4/04_Configuration/Camera_DisplayClient.pdf.

Camera Configuration Wizard

The **Camera Configuration Wizard** allows an IP Camera to be configured as a Display Server within ThinManager.

Launch the **Camera Configuration Wizard** by right clicking on **Cameras** in the Display Servers branch and selecting **Add Camera**.



Camera Name Page

The screenshot shows a window titled "Camera Configuration Wizard" with a close button in the top right corner. The main title is "Camera Name" and the subtitle is "Enter the camera name and network location". There is a logo in the top right corner of the window. The form is divided into three sections:

- Camera Name and Group:** Contains a text field for "Camera Name" with the value "Cam1" and an empty text field below it. A "Change Group" button is located to the right of the empty field.
- Camera Model:** Contains two dropdown menus. The "Make" dropdown is set to "generic" and the "Model" dropdown is also set to "generic".
- Camera Network Setup:** Contains two text fields. The "IP Address" field is set to "99 . 98 . 97 . 207" and the "Port" field is set to "80".

At the bottom of the window, there are five buttons: "< Back", "Next >", "Finish", "Cancel", and "Help".

Camera Configuration Wizard

The first page names the camera. Enter a name for the camera in the **Camera Name** field.

Enter the make and model of the camera in the Make and Model field. Use "Generic" if you don't have a specific setting.

Enter the IP address and the port in the **IP Address** and **Port** fields. The IP address and port are set by using the camera manufacturers configuration software or through the use of the camera's web browser interface.



Camera Authentication Page

Camera Configuration Wizard

Camera Authentication
Enter the camera username and password

Username

Password

Verify Password

< Back Next > Finish Cancel Help

Camera Authentication

The second page provides authentication.

If your camera requires authentication enter it on this page. If the camera has been configured to allow anonymous connections, leave the information blank.

The terminal can use the authentication information when connecting to the camera. Authentication information is setup in the camera by using the camera manufacturers configuration software or through the use of the camera's web browser interface.



Camera Model Options

The screenshot shows a window titled "Camera Configuration Wizard" with a sub-header "Camera Model Options" and the instruction "Select the camera model specific options". A checkbox labeled "Include Camera Options" is checked. Below this, a table of configuration options is displayed:

Resolution	320x240
Frames per second	10
Compression	10
Show Clock	NO
Show Date	NO
Show Text	NO
Text Position	TOP
Text	

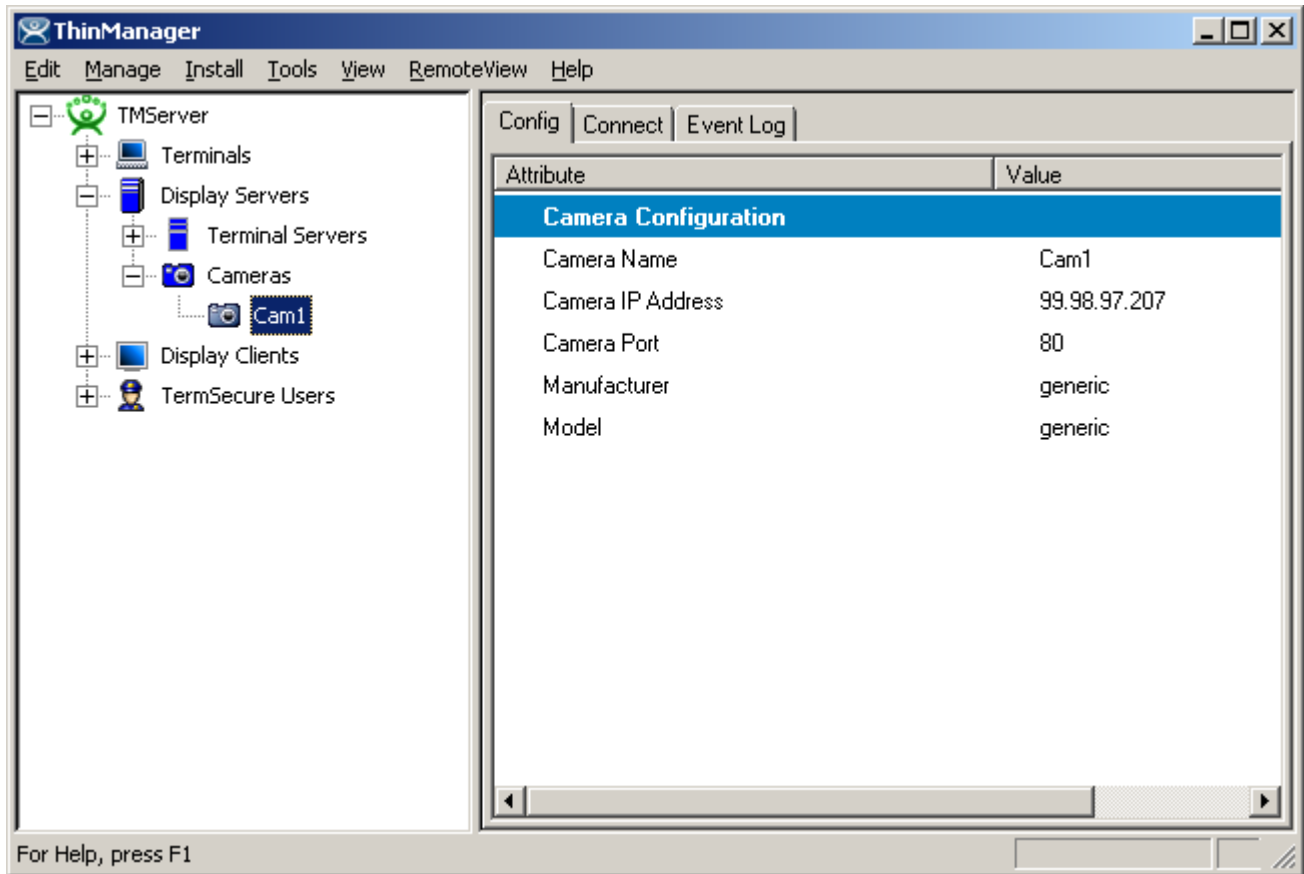
At the bottom of the dialog are five buttons: "< Back", "Next >", "Finish", "Cancel", and "Help".

Camera Model Options

Some cameras support additional configuration options. These options can be configured on this page. The options may include Resolution, Frames per second, compression, and others.

If you wish to use the default options then leave the **Include Camera Options** unchecked.

Select **Finish** to save the settings and complete the wizard.



Camera Tree View

The newly created camera will appear in the ThinManager tree in the Display Server branch.



IP Camera Group Configuration

The camera group configuration wizard can be launched by right clicking on the **Cameras** branch of the ThinManager tree and selecting the **Add Camera Group** option.

A screenshot of the 'Camera Configuration Wizard' dialog box. The title bar reads 'Camera Configuration Wizard'. The main area is titled 'Camer Group Name' with the instruction 'Enter the camera group name'. Below this, there is a section labeled 'Camera Name and Group' containing a text input field with 'CamGroup1' and a 'Change Group' button. At the bottom of the dialog are five buttons: '< Back', 'Next >', 'Finish', 'Cancel', and 'Help'.

Camera Configuration Wizard

Camer Group Name
Enter the camera group name

Camera Name and Group

Camera Name

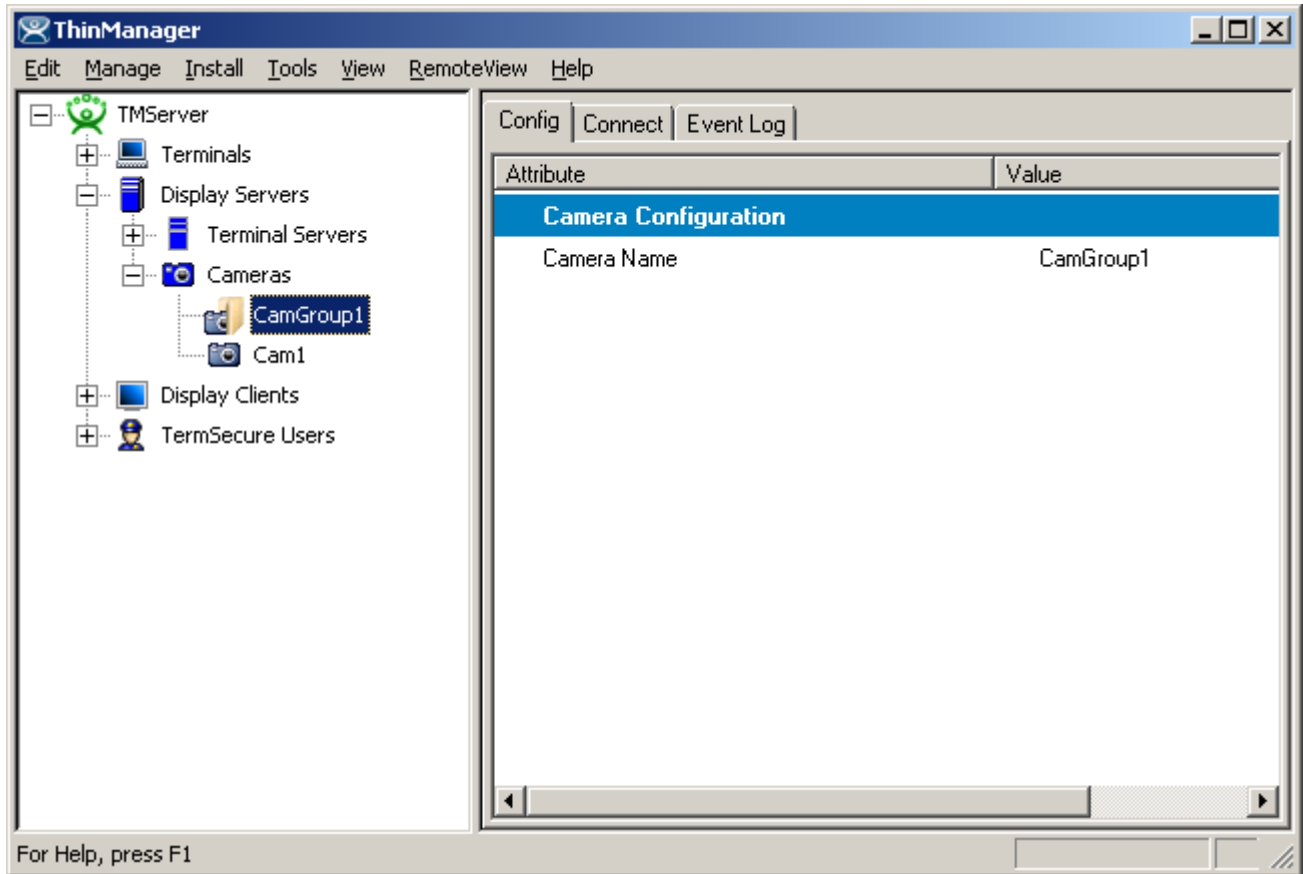
< Back Next > Finish Cancel Help

Add Camera Group Wizard

Enter a name for the Camera Group Name in the Camera Name field.

The Camera Group acts as a folder for the Camera Display Servers and has no additional settings.

Select **Finish** to complete the group creation.



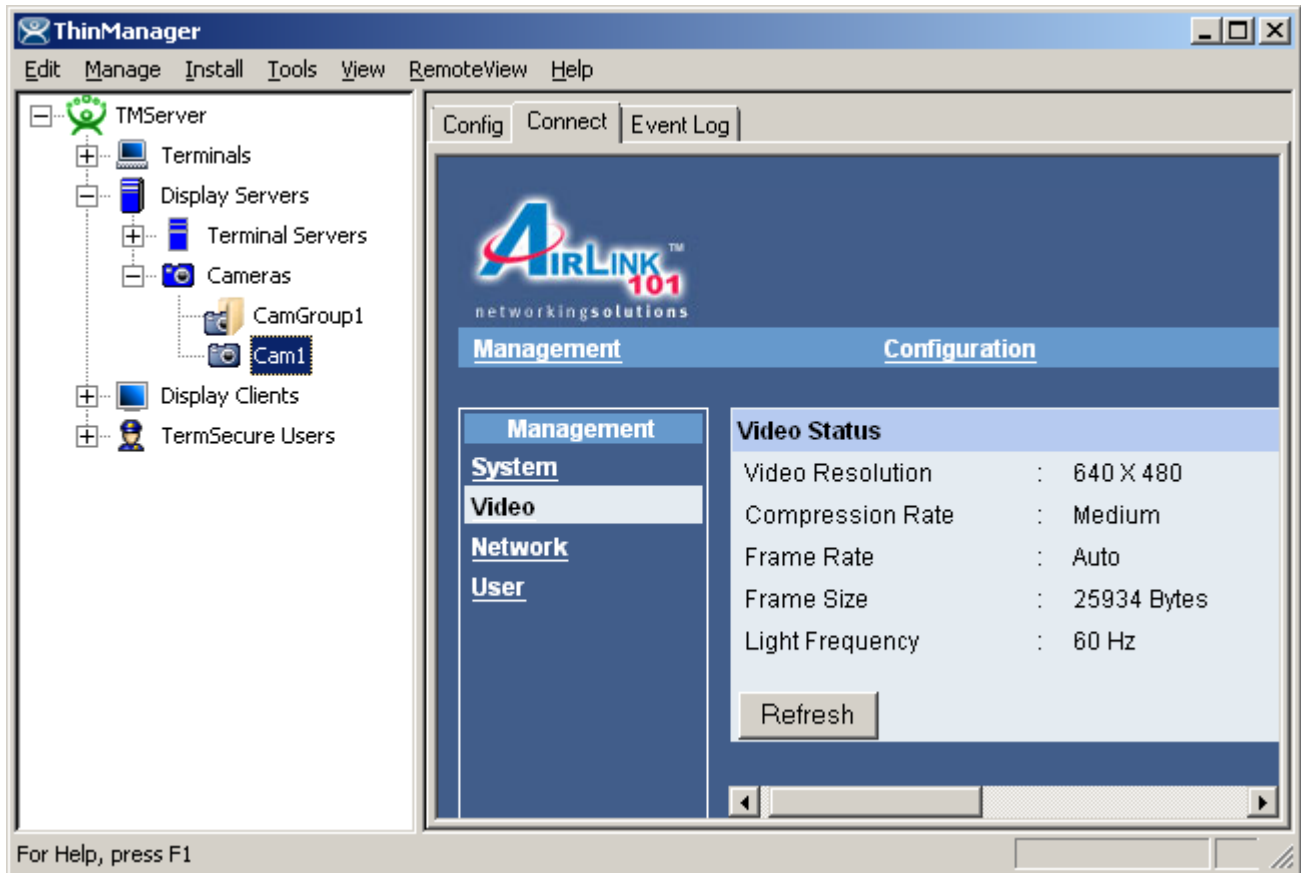
Camera Group Tree View

The Camera group will be shown in the ThinManager tree in the Cameras branch of the Display Servers .



IP Camera Administration

Once a camera is configured in ThinManager, the **Connect** tab can be used to connect to the camera and perform camera administration from ThinManager.



Camera Connect Tab

Camera log in information may be requested when using the **Connect** tab. The authentication information entered during the camera configuration is not used when using the connect tab.