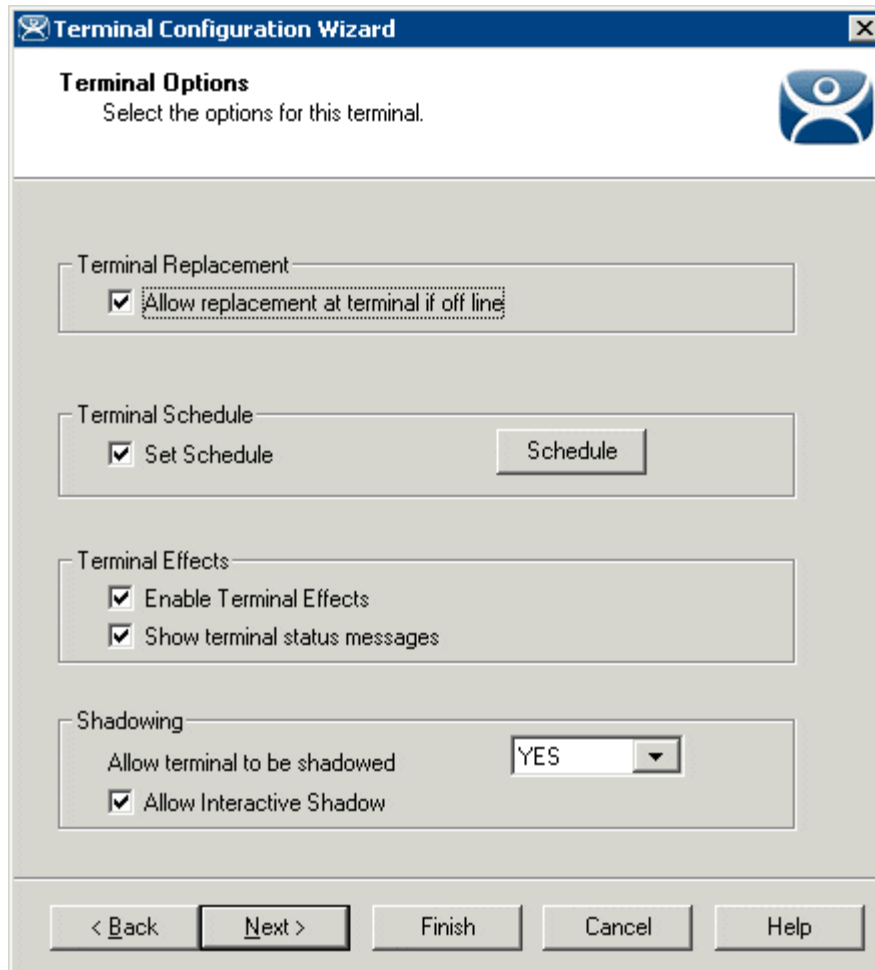


20 Scheduling

ThinManager allows tasks to be automated with the Schedule function. This applies to Terminals, Terminal Groups, Terminal Servers, TermSecure Users, and the ThinManager Server.

20.1 Terminal Schedule

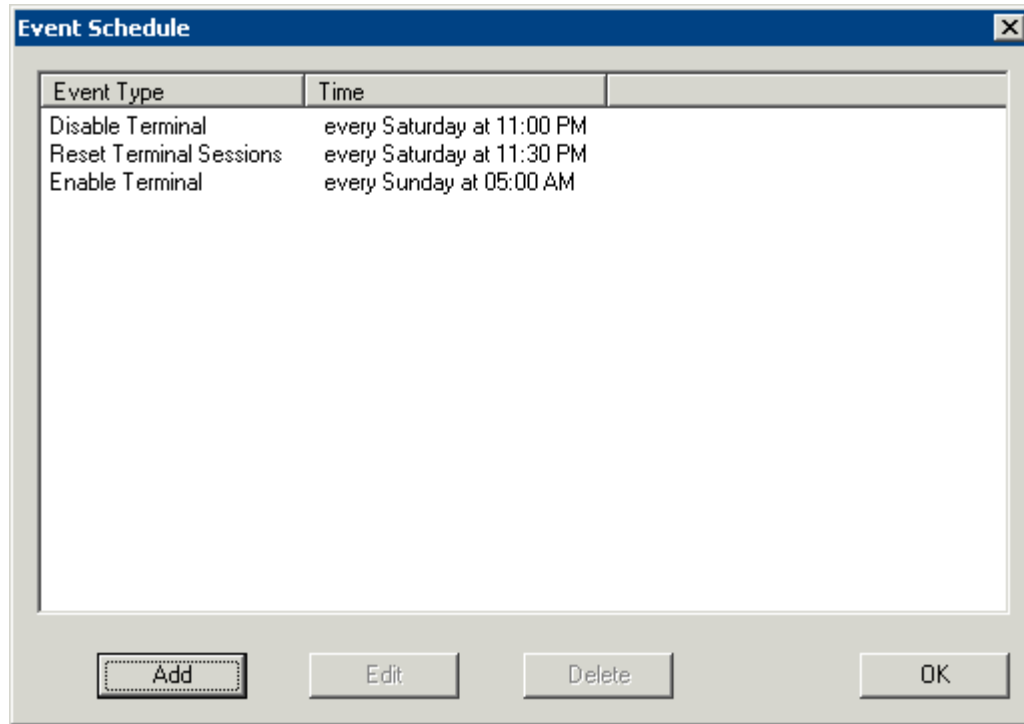
Selecting the ***Schedule*** button on the **Terminal Options** page will launch the **Event Schedule** window and allow a schedule to be created for terminal events.



Terminal Configuration Wizard - Terminal Options Page

Check the **Set Schedule** checkbox and select the **Schedule** button to launch the **Event Schedule** window.

Note: The Schedule for Terminal Groups is the same as for individual terminals. It has an advantage of applying the scheduled events to a whole group of terminals instead of requiring a configuration for each event on each terminal.

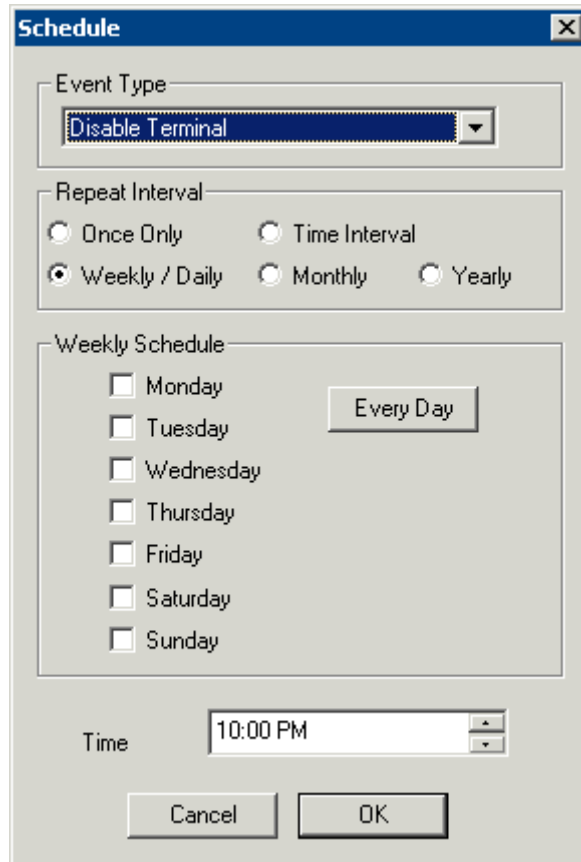


Event Schedule

The Event Schedule will list events for the terminal or group. It has four buttons:

- The **Add** button will launch a **Schedule** window to allow an event to be configured.
- The **Edit** button will allow a highlighted event to be changed.
- The **Delete** button will remove a highlighted event.
- The **OK** button will accept changes and close the **Event Schedule** window.

Events can be added by selecting the **Add** button to launch the **Schedule** window.



Schedule Window

The **Schedule** window has several configuration settings.

Event Type is a drop-down box that allows event selection:

- **Disable Terminal** - This will prevent a terminal from being used, although its terminal server sessions will still be running on the terminal servers.
- **Enable Terminal** - This will allow a disabled terminal to become active again.
- **Reboot Terminal** - This will cycle power on the terminal and reload its configuration.
- **Reset Terminal Sessions** - This will logoff the sessions that the terminal has open on terminal servers.

The **Repeat Interval** radio buttons allow the event in the **Event Type** drop-down to be run **Once Only**, **Weekly/Daily**, **Monthly**, or **Yearly**.

- Selecting **Once Only** will show a **Select Date** field for the event.
- Selecting **Weekly/Daily** will show a **Weekly Schedule** list for the event to run. The **Every Day** button will select all the days in the list.
- Selecting **Monthly** will show a **Select Day of Month** field for the event.
- Selecting **Yearly** will show a **Select Date** field for the event.

The **Time** field allows the selection of the time that the event should occur.

Select the **OK** button to close the **Schedule** window.

Select **Add** to add another event to the **Event Schedule** or select **OK** to close the **Event Schedule** window and return to the terminal configuration.

20.2 Terminal Server Schedule

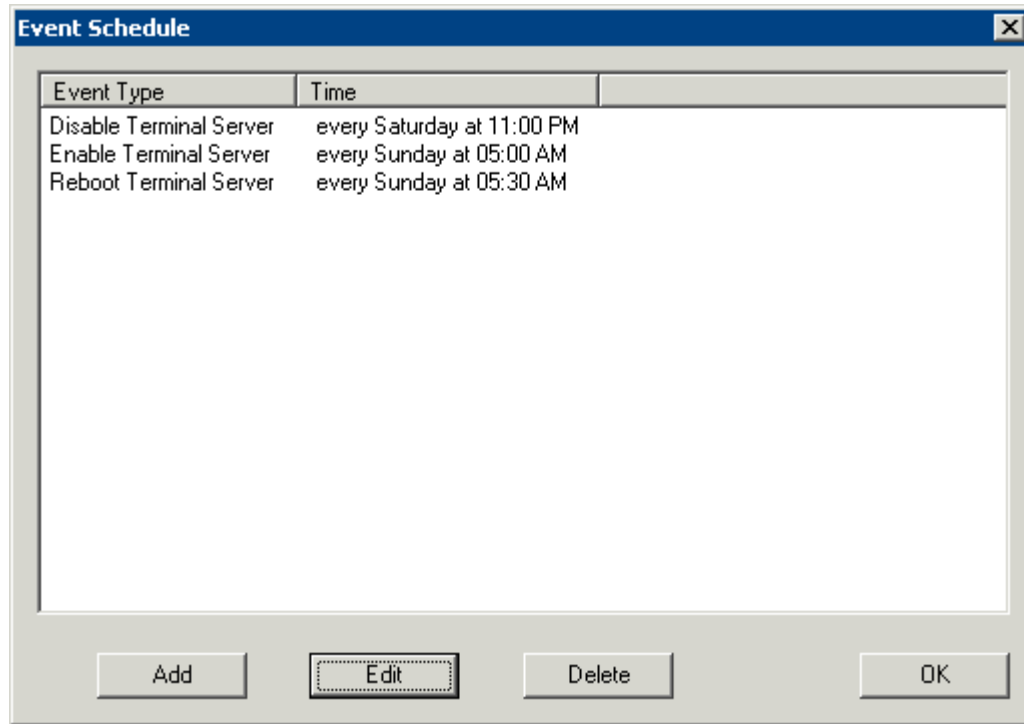
The **Terminal Server Name** page of the Terminal Server Wizard has a **Schedule** button to configure a schedule for terminal server events.

The screenshot shows the 'Terminal Server Wizard' window. The title bar reads 'Terminal Server Wizard'. The main heading is 'Terminal Server Name' with the instruction 'Enter the Terminal Server Name and Log In information.' The form contains the following fields and buttons:

- Terminal Server Name:
- Terminal Server IP:
- Log In Information section:
 - Domain:
 - User Name:
 - Password:
 - Verify Password:
-
- Navigation buttons at the bottom:

Terminal Server Wizard – Terminal Server Name Page

Select the **Schedule** button on the **Terminal Server Name** page of the Terminal Server Wizard to launch the **Event Schedule** window.

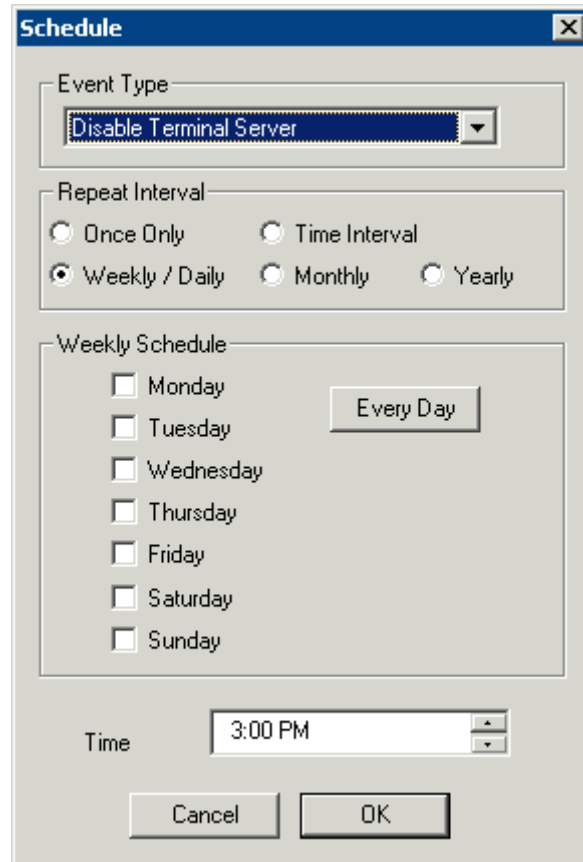


Event Schedule

The **Event Schedule** will list events for the terminal or group. It has four buttons.

- The **Add** button will launch a **Schedule** window to allow an event to be configured.
- The **Edit** button will allow a highlighted event to be changed.
- The **Delete** button will remove a highlighted event.
- The **OK** button will accept changes and close the **Event Schedule** window.

Events can be added by selecting the **Add** button to launch the **Schedule** window.



Schedule Window

The **Schedule** window has several configuration settings.

Event Type is a drop-down box that allows event selection:

- **Disable Terminal Server** - This will disconnect all the thin clients connected to the terminal server. The sessions will remain idle on the terminal server unless they are set to disconnect in the Terminal Services Configuration console. See *Disable Terminal Server* for details.
- **Enable Terminal Server** - This will allow a disabled terminal server to accept thin client connections again.
- **Reboot Terminal Server** - This will cycle power on the terminal server and restart it.

The **Repeat Interval** radio buttons allow the event in the **Event Type** drop-down to be run **Once Only**, **Weekly/Daily**, **Monthly**, or **Yearly**.

- Selecting **Once Only** will show a **Select Date** field for the event.
- Selecting **Weekly/Daily** will show a **Weekly Schedule** list for the event to run. The **Every Day** button will select all the days in the list.
- Selecting **Monthly** will show a **Select Day of Month** field for the event.
- Selecting **Yearly** will show a **Select Date** field for the event.

The **Time** field allows the selection of the time that the event should occur.

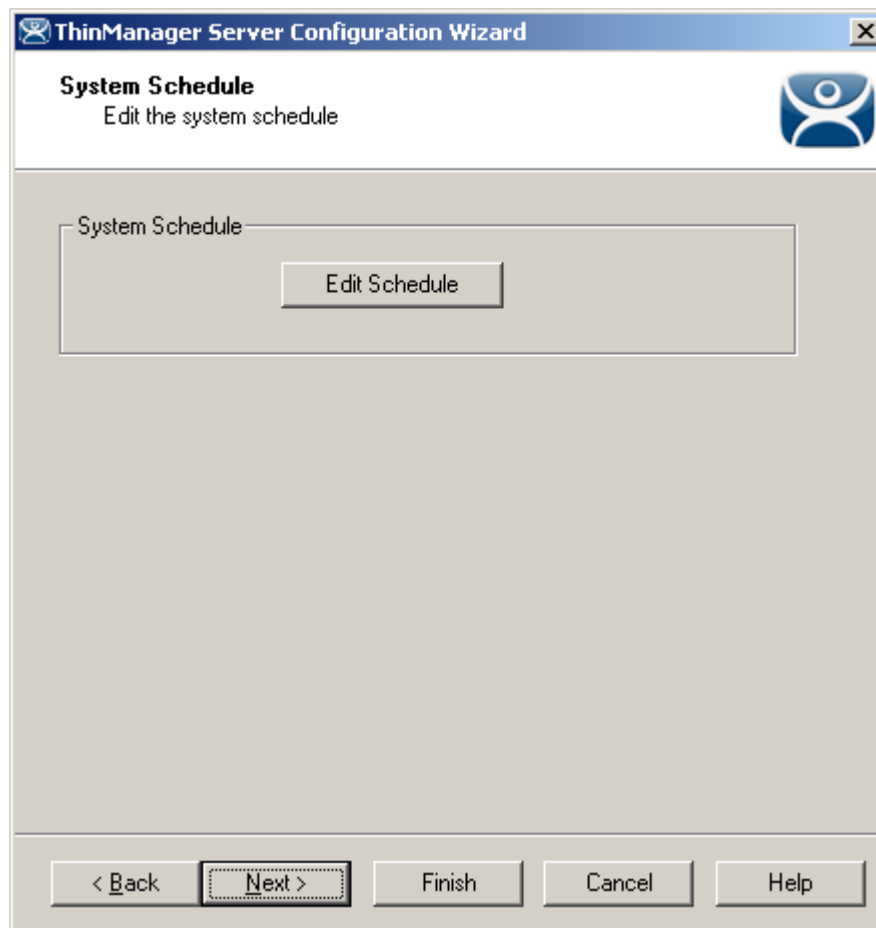
Select the **OK** button to close the **Schedule** window.

Select **Add** to add another event to the **Event Schedule** or select **OK** to close the **Event Schedule** window and return to the terminal server configuration.

20.3 ThinManager Server Schedule

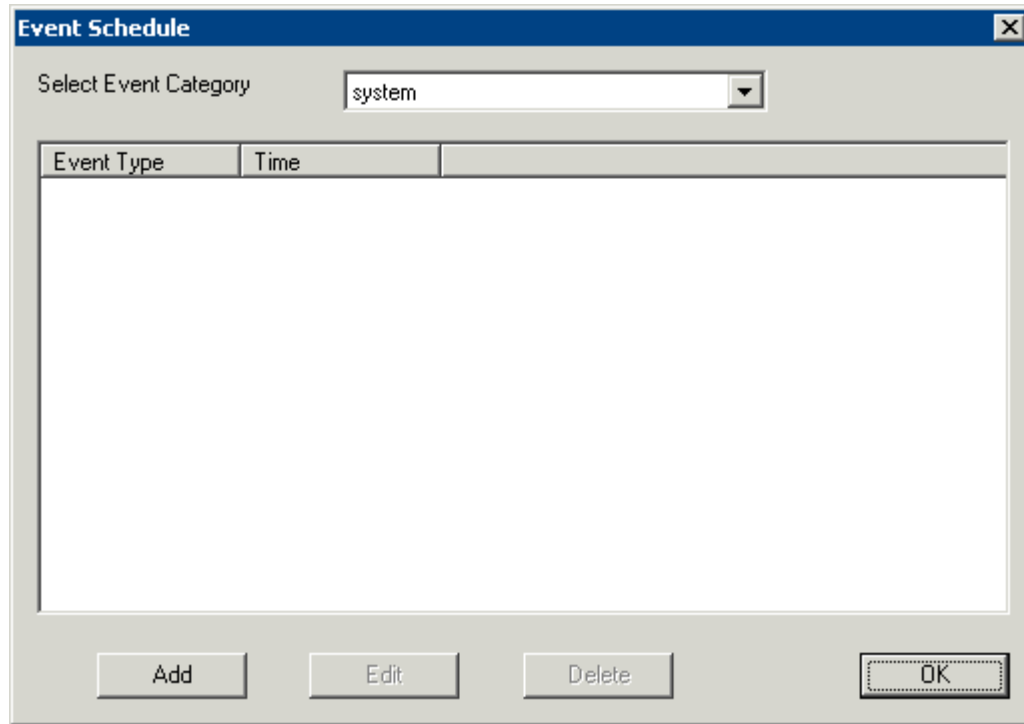
The **ThinManager Server Configuration Wizard** has a **System Schedule** page that allows the Scheduler to be launched. This allows tasks to be scheduled for the ThinManager Server.

20.3.1.1 System Schedule



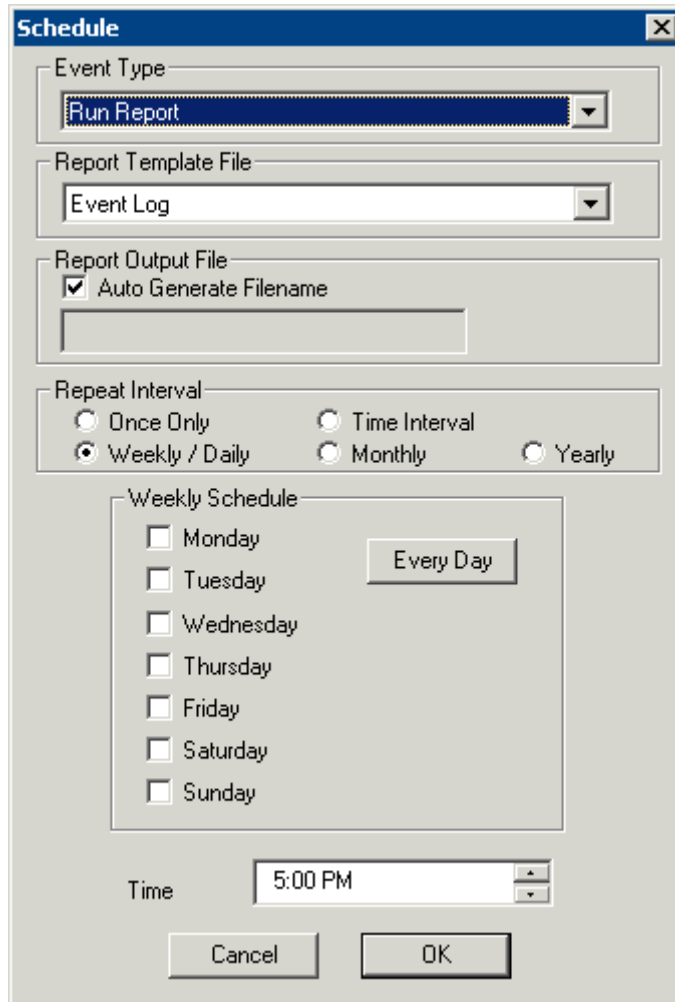
System Schedule

Select the **Edit Schedule** button to launch the **Event Schedule** window.



Event Schedule Window

The **Event Schedule** window allows events to be scheduled by selecting the **Add** button when **system** is displayed in the **Select Event Category** drop-down box.



Schedule for Weekly Event

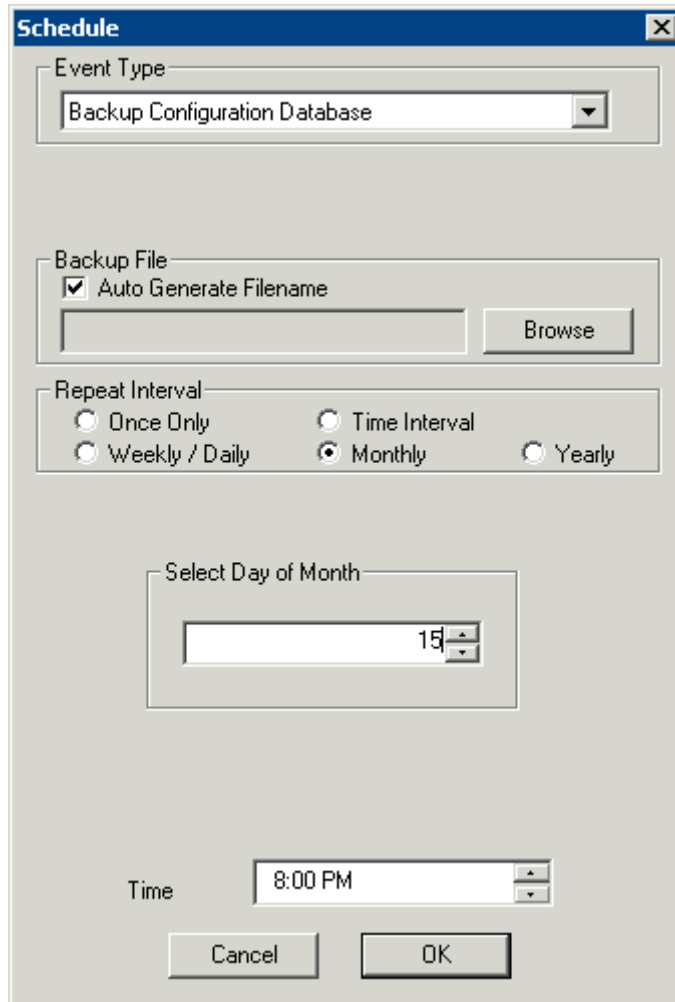
The **Schedule** dialog allows events to be scheduled for the ThinManager. The two main events are **Run Report** and **Backup Configuration Database**.

Select the desired event in the **Event Type** drop-down.

If **Run Report** is chosen, select the desired report in the **Report Template File** drop-down.

If **Backup Configuration Database** is chosen the backup file will be automatically chosen if the **Auto Generate Filename** checkbox is selected. To use a different filename, uncheck the **Auto Generate Filename** checkbox and enter the desired name in the **Report Output Filename**. A **Browse** button will appear to allow selection of the file.

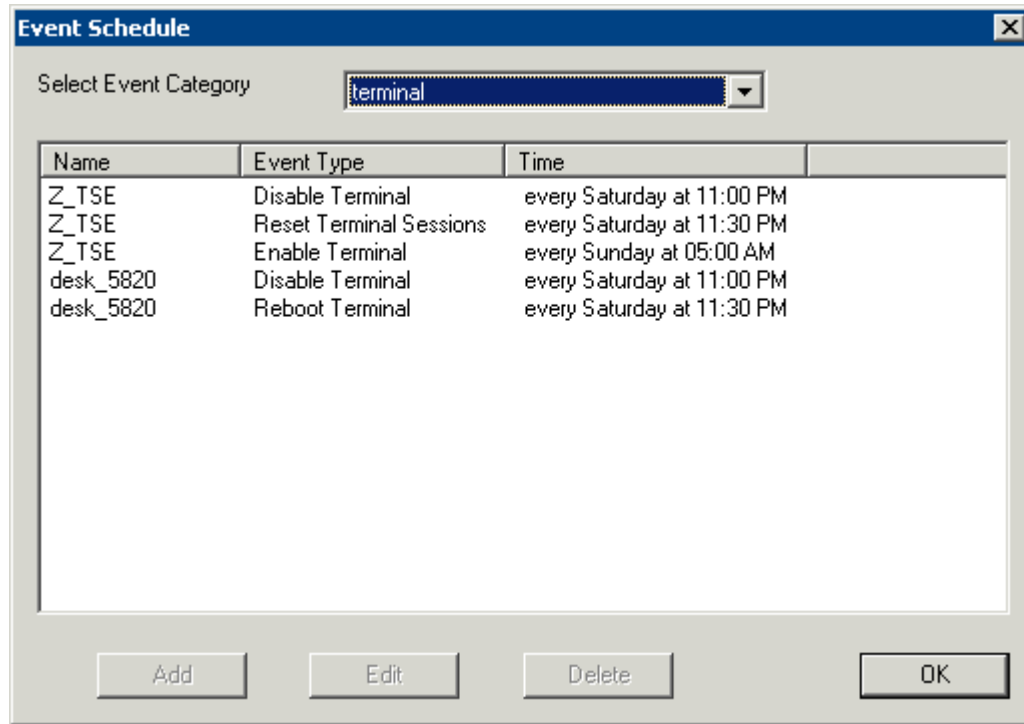
The **Repeat Interval** radio buttons control the frequency of the event. The time selection varies with the **Repeat Interval** chosen.



Schedule for Monthly Event

Select the appropriate time for the event and select **OK** to accept the configuration and **Cancel** to cancel the changes.

While the **Event Schedule** window is open, other scheduled events can be viewed by selecting the event type in the **Select Events Category** drop-down. The event categories are **system** (ThinManager Server), **terminal** (Terminals), **terminalserver** (Terminal Servers) and **user** (TermSecure Users).



Events Schedule

New events cannot be added for the non-system categories, but existing events can be changed by highlighting an event and selecting the **Edit** button. Events can be deleted by selecting the **Delete** button.

The **OK** button accepts the changes and closes the window.

20.4 TermSecure User Schedule

TermSecure Users and TermSecure User Groups have a schedule on the **User Options** page of the TermSecure User Configuration Wizard.

TermSecure User Configuration Wizard

User Options
Select options for this user.

Log In / Log Out Options

Inactivity Timeout: 120 seconds

Reset Sessions at Logout:

Activate User Group at Log In:

User Schedule

Set Schedule

Terminal Effects

Enable Terminal Effects

Shadowing

Allow terminal to be shadowed: YES

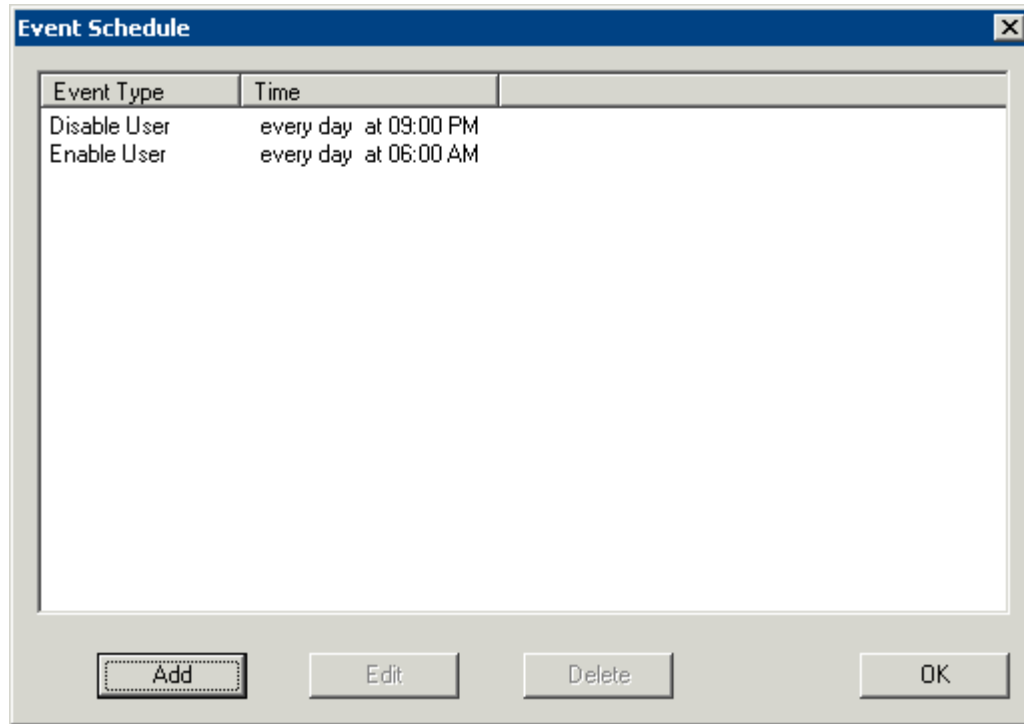
Allow Interactive Shadow

< Back Next > Finish Cancel Help

TermSecure User Terminal Configuration Wizard – User Options Page

Check the **Set Schedule** checkbox and select the **Schedule** button to launch the **Event Schedule** window.

Note: The Schedule for TermSecure User Groups is the same as for individual TermSecure Users. It has an advantage of applying the scheduled events to a whole group of users instead of requiring a configuration for each event on each user.

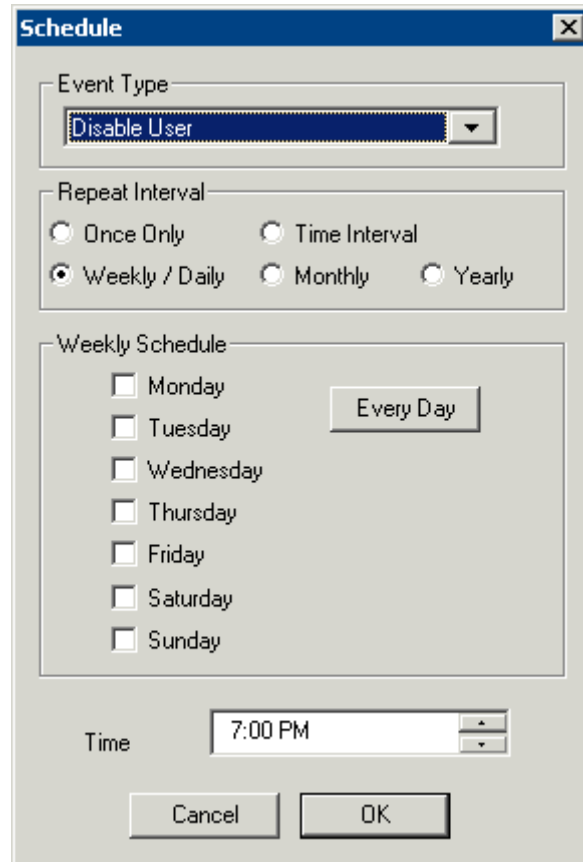


Event Schedule

The Event Schedule will list events for the TermSecure User or TermSecure User group. It has four buttons:

- The **Add** button will launch a **Schedule** window to allow an event to be configured.
- The **Edit** button will allow a highlighted event to be changed.
- The **Delete** button will remove a highlighted event.
- The **OK** button will accept changes and close the **Event Schedule** window.

Events can be added by selecting the **Add** button to launch the **Schedule** window.



Schedule Window

The **Schedule** window has several configuration settings.

Event Type is a drop-down box that allows event selection:

- **Disable User** - This will prevent a user from logging in through TermSecure or will disconnect and existing session.
- **Enable User** - This will allow a user to become active again.

The **Repeat Interval** radio buttons allow the event in the **Event Type** drop-down to be run **Once Only**, **Weekly/Daily**, **Monthly**, or **Yearly**.

- Selecting **Once Only** will show a **Select Date** field for the event.
- Selecting **Weekly/Daily** will show a **Weekly Schedule** list for the event to run. The **Every Day** button will select all the days in the list.
- Selecting **Monthly** will show a **Select Day of Month** field for the event.
- Selecting **Yearly** will show a **Select Date** field for the event.

The **Time** field allows the selection of the time that the event should occur.

Select the **OK** button to close the **Schedule** window.

Select **Add** to add another event to the **Event Schedule** or select **OK** to close the **Event Schedule** window and return to the terminal configuration.