

Reports

Reports

ThinManager has the ability to run reports to show and collect data on the ThinManager system. These reports can show the event log, configurations, uptimes, and other data.

A **Reports** tab on the Details pane will show a report for a highlighted ThinManager Server, terminal, terminal group, terminal server, TermSecure user, or TermSecure user group.

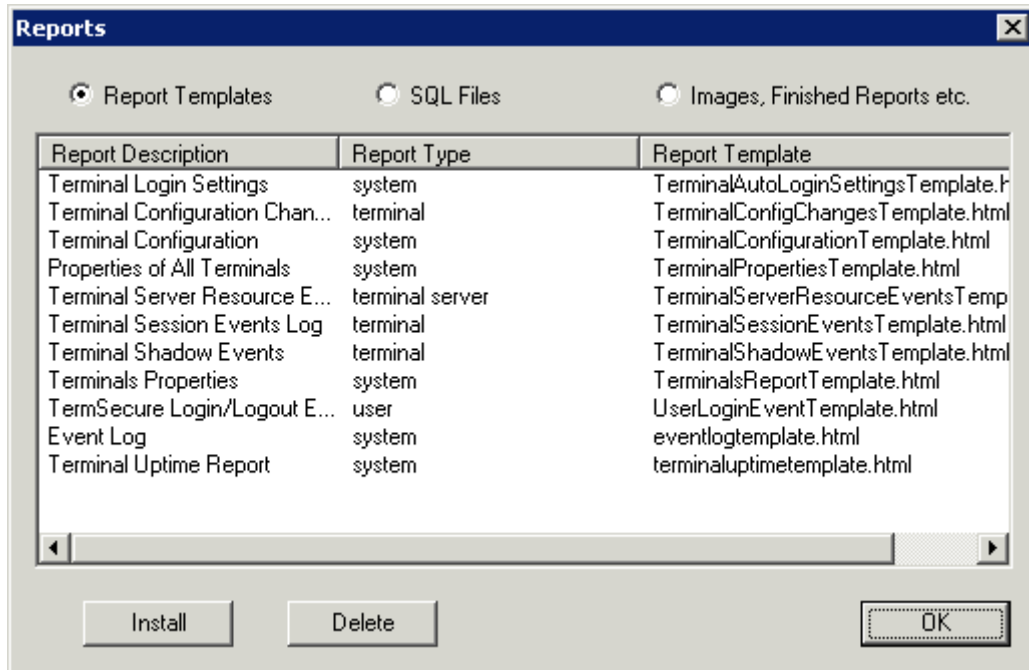
Reports can be scheduled to be run and saved as ***.html** files for storage or further analysis.

Report Template Installation

ThinManager will install a number of reports into the ThinManager folder (C:\Program Files\Automation Control Products\ThinManager\ReportTemplates) during installation.

Additional report templates can be downloaded from www.thinmanager.com/support/downloads.shtml as they become available.

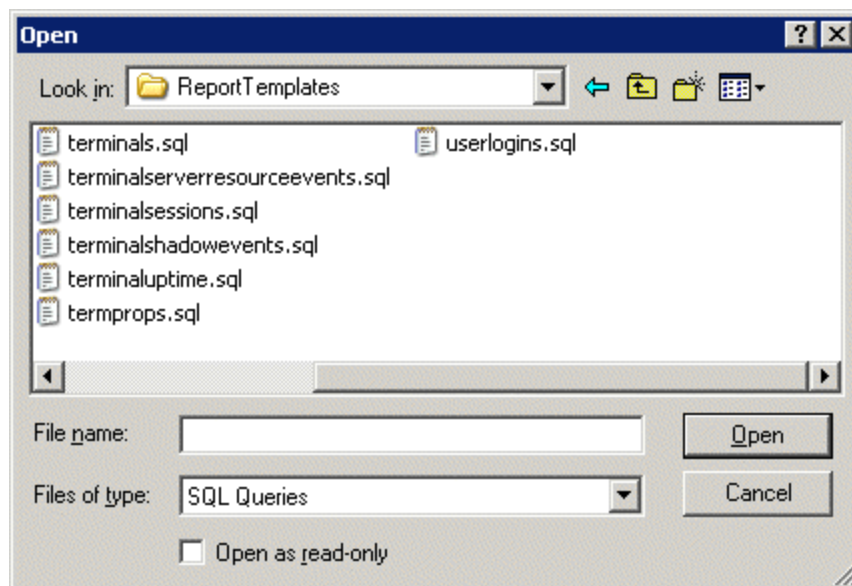
New reports are installed by selecting **Install > Reports** from the ThinManager menu. This launches the **Reports** window.



Reports Window

Select the **Install** button to launch a file browser.

- **Report Templates** – If this radio button is selected the file browser will browse for ***.html** files.
- **SQL Files** – If this radio button is selected the file browser will browse for ***.sql** files.
- **Images, Finished Reports, etc.** – If this radio button is selected the file browser will browse for assorted files.

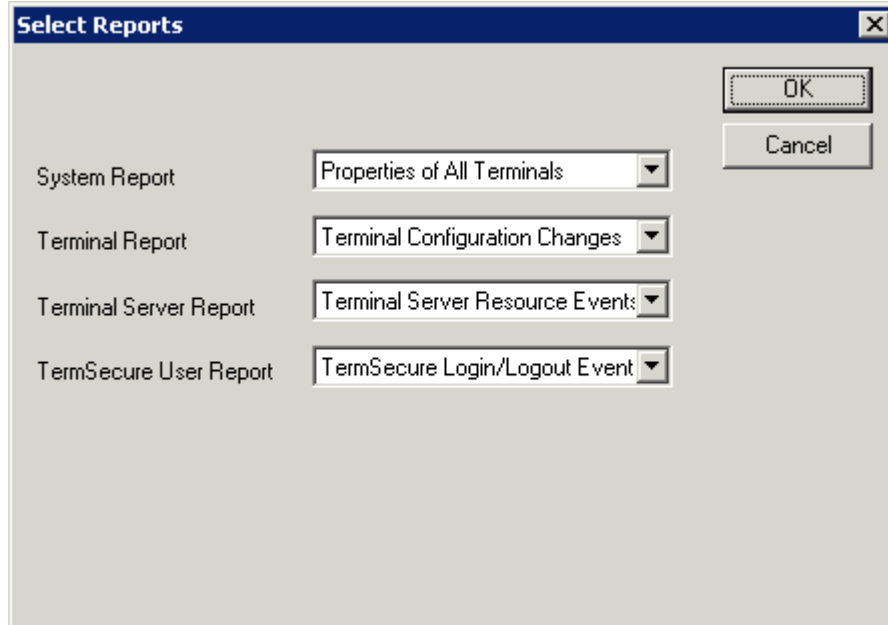


File Browser

Each report has a ***.html** component and a ***.sql** component. Select the **Report Templates** radio button, browse to the new ***.html** file, and select **Open** to install. Select the **SQL Files** radio button, browse to the new ***.sql** file and select **Open** to install. Once these two components are added the report will be available.

Selecting Reports

The reports are displayed on a **Report** tab in ThinManager. To select which report will be displayed on the Report tab select **View > Reports** from the ThinManager menu to launch the **Select Reports** window.



Select Reports Window

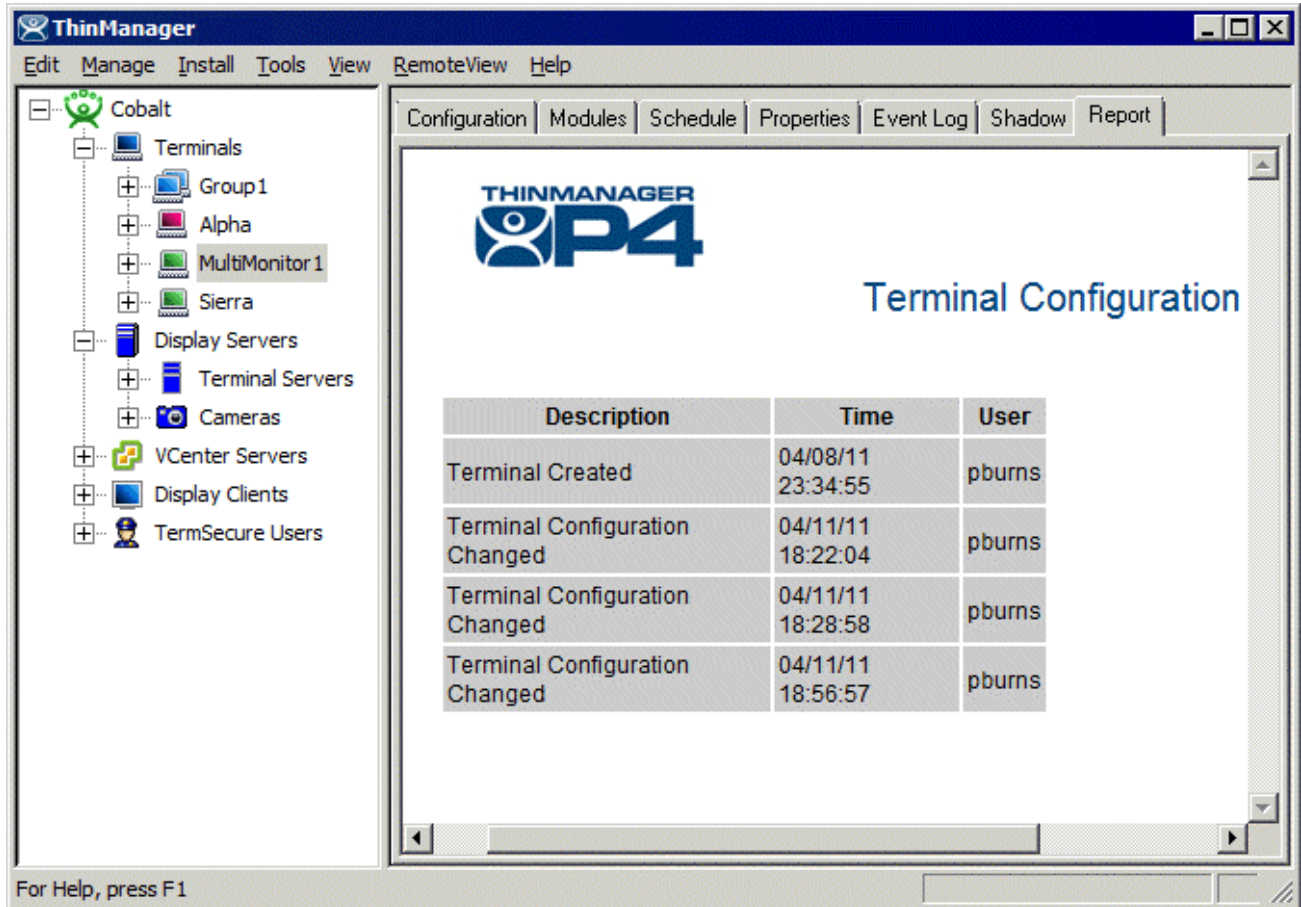
The **Select Reports** window has four fields that determine which report is displayed on the report tab.

- **System Report** – This selects the report to display on the report tab when the ThinManager Server is highlighted.
- **Terminal Report** – This selects the report to display on the report tab when a terminal or terminal group is highlighted.
- **Terminal Server Report** – This select the report to display on the report tab when a terminal server is highlighted.
- **TermSecure User Report** – This selects the report to display on the report tab when a TermSecure User or TermSecure User Group is highlighted.

Use the drop-down list to select the desired report.

Report Tab

The reports selected in the **Select Reports** window will be displayed on the **Report** tab in ThinManager.

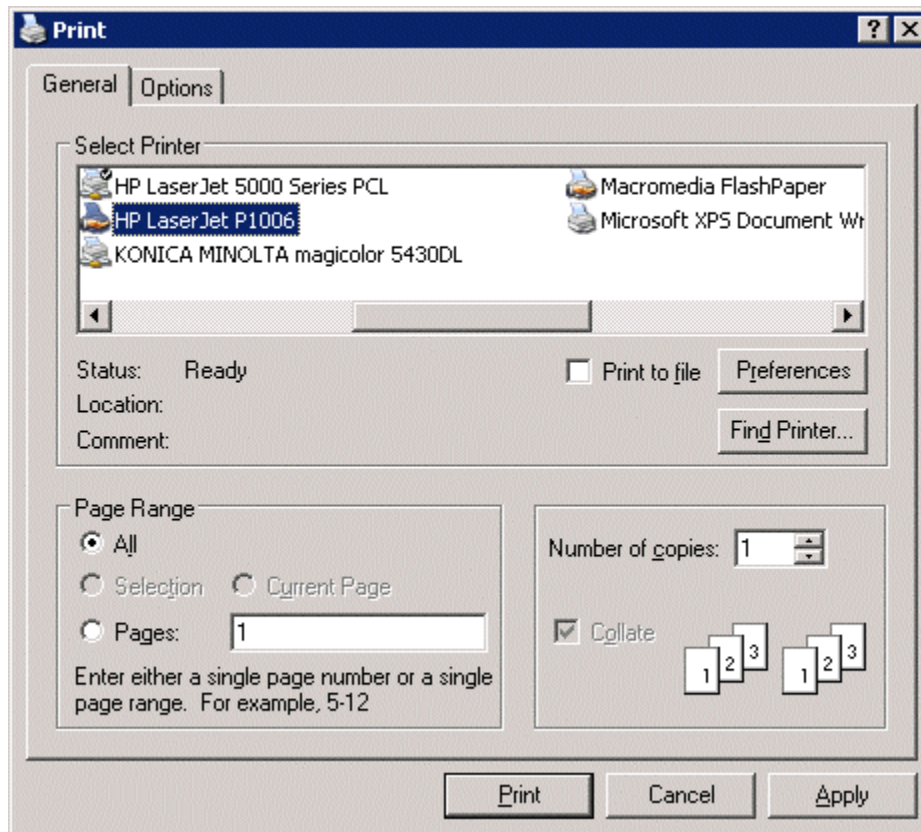


Report Tab

Highlight the desired ThinManager Server, terminal, terminal group, terminal server, TermSecure user, or TermSecure group, and then select the **Report** tab to display the report.

Print Report

A Report can be printed by selecting the Report tab then selecting **View > Print** from the ThinManager menu. A **Print** window will be displayed to allow the selection of the printer.



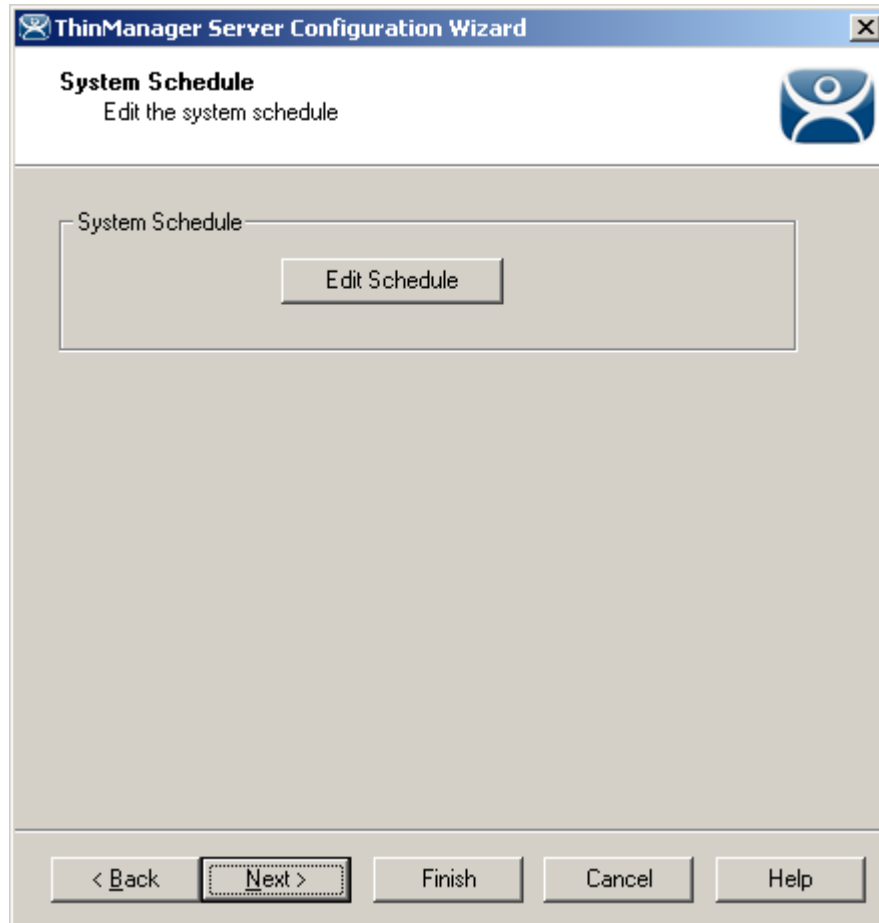
Print Window

Highlight the desired printer and select the **Print** button to print the report.

Scheduling Reports

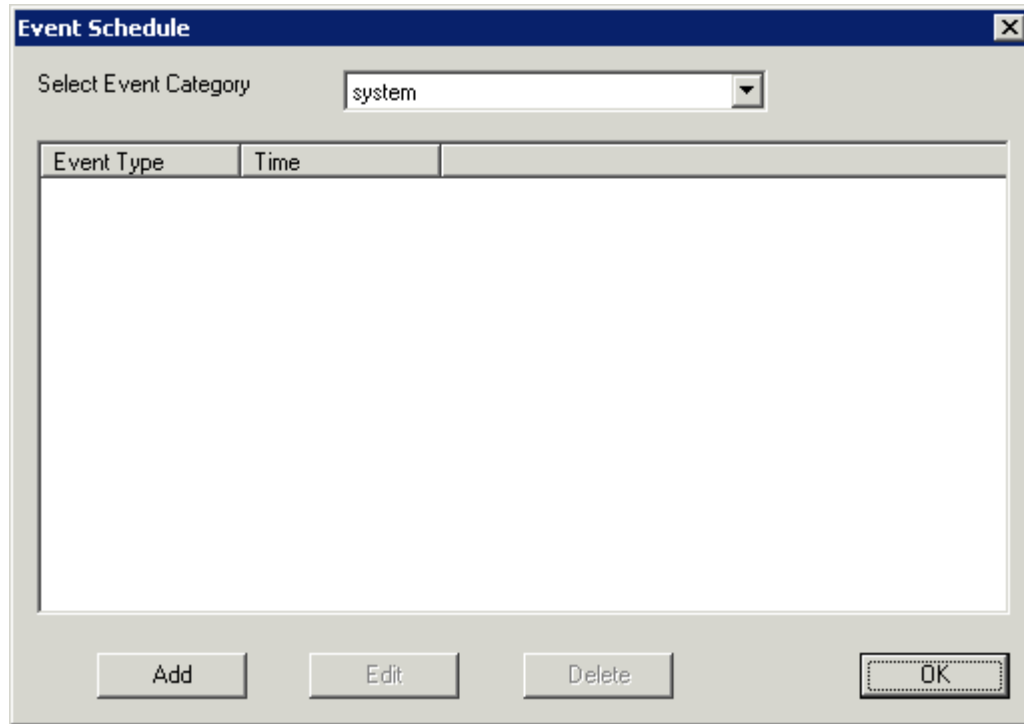
Reports can be scheduled to be run once at a specified time or to be run regularly at a specific time. The reports are saved as *.html files for storage or further analysis.

To schedule report generation open the **ThinManager Server Configuration Wizard** by highlighting the ThinManager Server and selecting **File > Modify**.



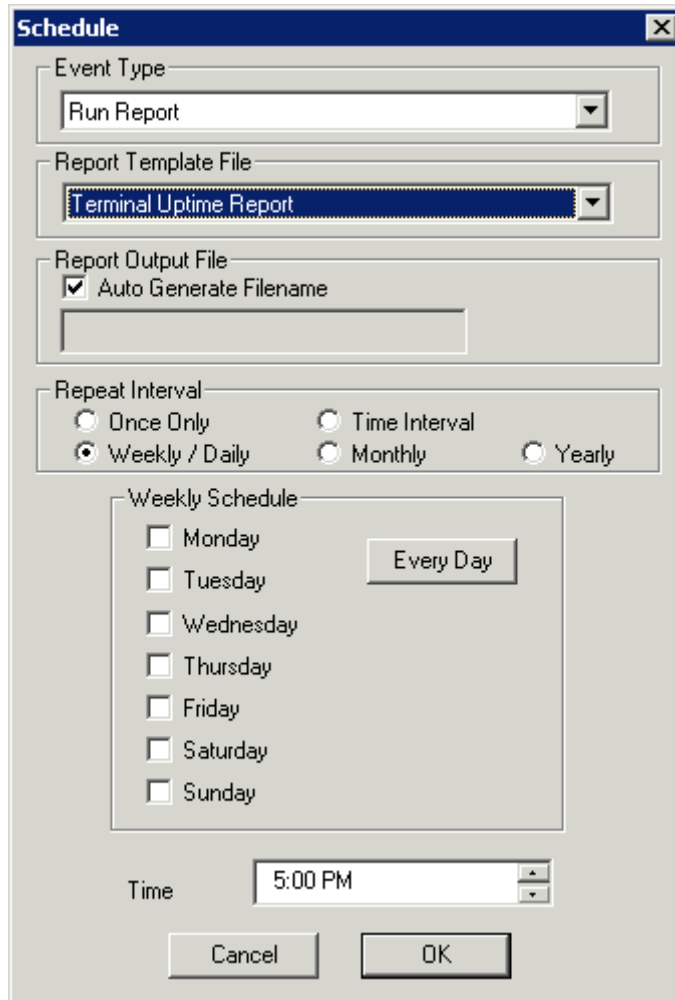
ThinManager Server Configuration Wizard – System Schedule

Navigate to the **System Schedule** page and select the **Edit Schedule** button to launch the **Event Schedule** window.



Event Schedule Window

Select the **Add** button to open the **Schedule** window.



Schedule Window

The Schedule window allows system events to be configured.

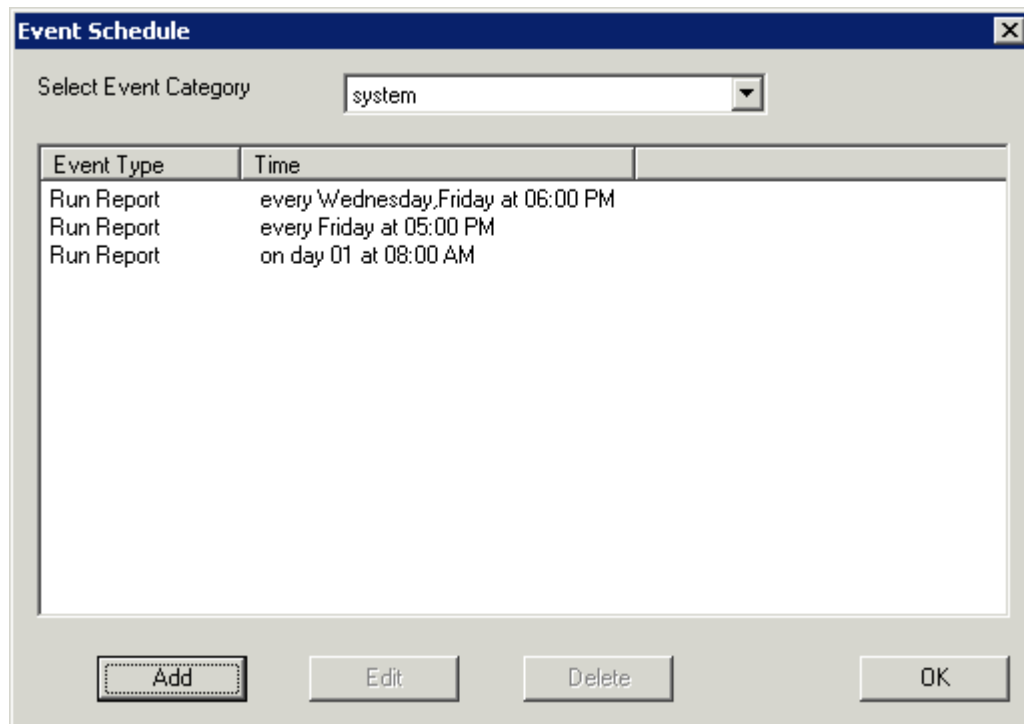
- **Event Type** – This drop-down allows the event to be chosen. There are two types:
- **Backup Configuration Database** – This allows a scheduling of automatic configuration backups.
- **Run Report** – This allows a report to be run and saved as a ***.html** file on a regular basis.
- **Report Template File** - This drop-down allows the selection of the report to run.
- **Report Output File** – This applies the naming convention to the saved reports.
- **Auto Generate Filename** – This checkbox, if selected, will save the file to the ThinManager folder with the report name and a time stamp as its title.
- If the **Auto Generate Filename** is unselected, the field allows entry of the desired filename. The filename needs to end in .html.

There are a few switches that allow the file name to be modified with a timestamp for identification purposes. If you do not use a timestamp, the file will be overwritten each time the report is run.

- **%c** – Adds date and time

- **%h** – adds hour (0-24)
- **%M** – adds minute (0-59)
- **%x** – adds date
- **%X** – adds time
- **Repeat Interval** – These radio buttons allow the frequency of the report generation to be set.
- **Time** – The fields to set the time of the report generation changes to match the **Report Interval** selected by the radio button. The **Time** field may allow dates, days, hours, or intervals to be set for the report.

Once the report is configured, select **OK** to accept the report schedule.

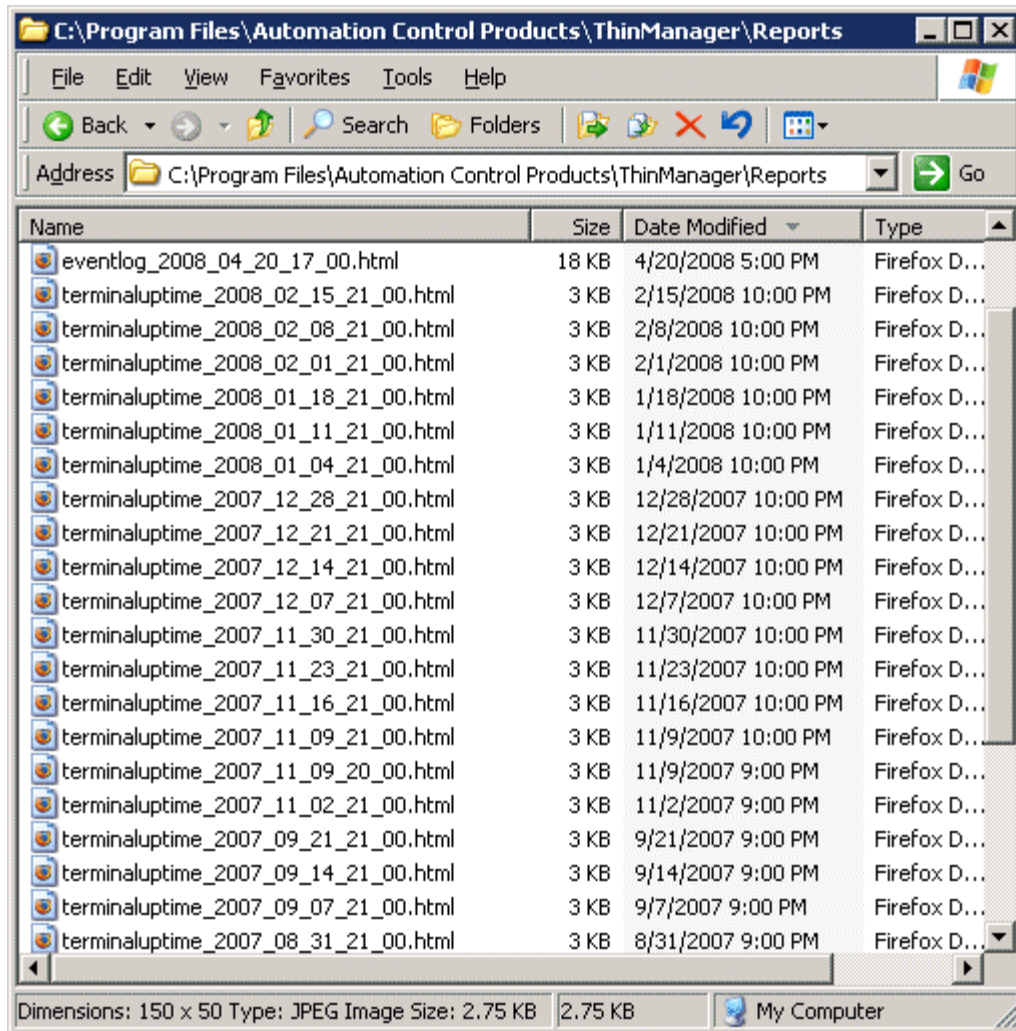


Event Schedule

The scheduled report will be displayed in the Event Schedule window.

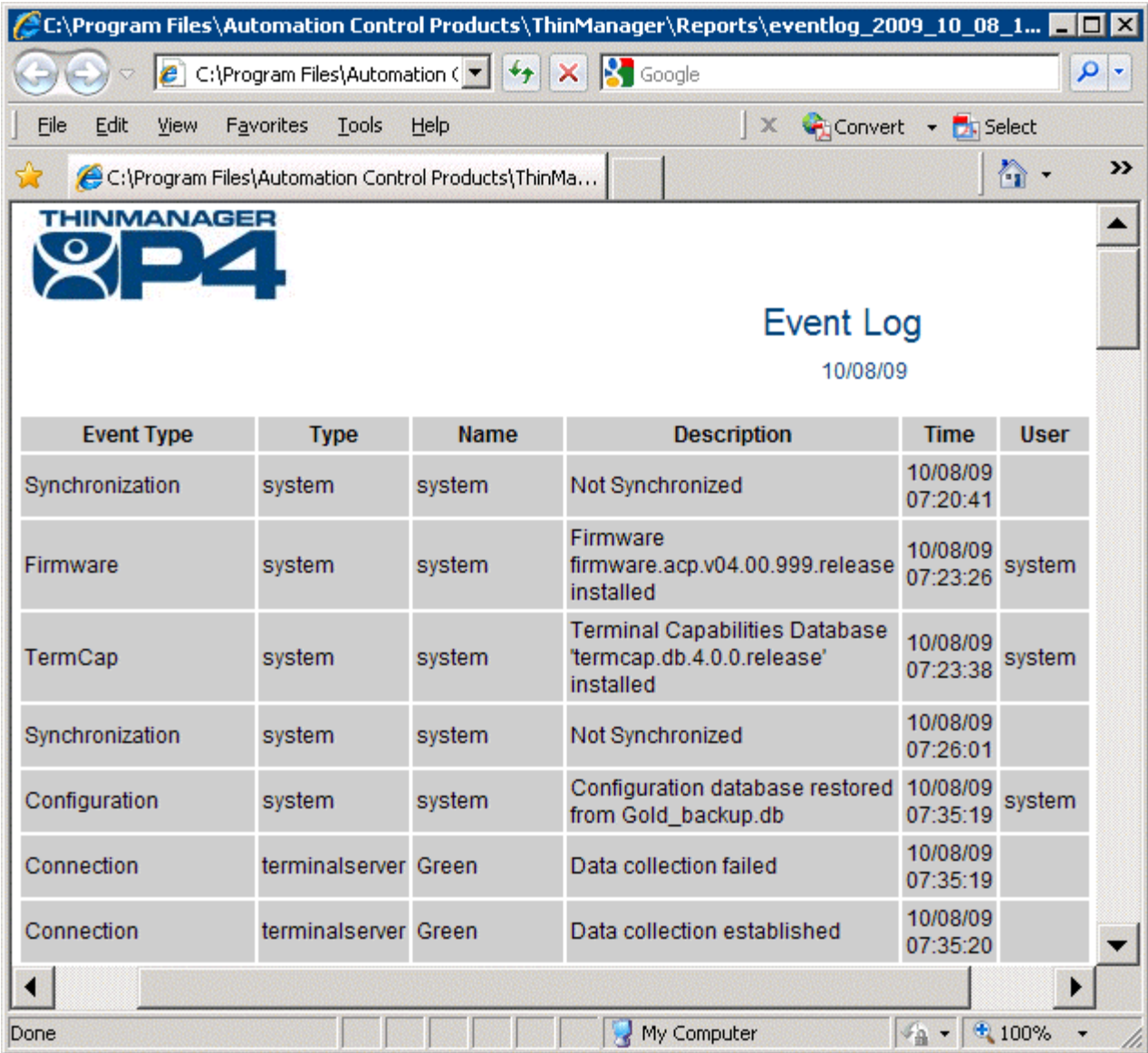
- Select **Add** to add another report schedule.
- Select **Edit** to edit the schedule of a highlighted report.
- Select **Delete** to delete the schedule of a highlighted report.
- Select **OK** to accept the schedules and close the window.

When a report is run the files are saved for viewing.



Saved Reports

Once the report has run it can be opened in a web browser.



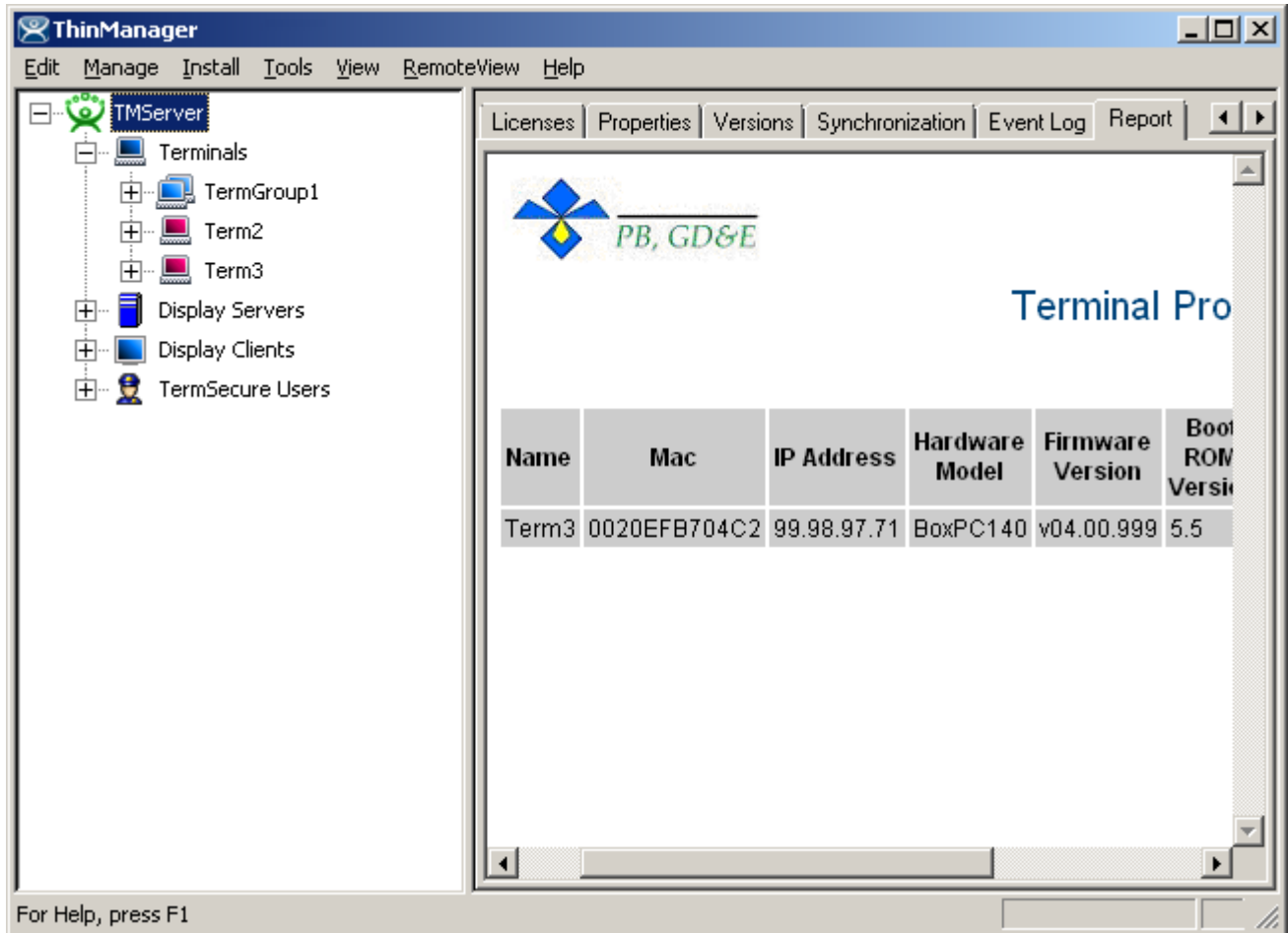
Report Shown in Internet Explorer

Once the report is generated the data can be saved or reformatted as desired using standard HTML tools.

Changing the Report Logo

Each report template has a ThinManager TM3 logo as part of the report header. This can be changed to your company logo.

1. Create a copy of the desired logo in *.jpg format with a size of 150x50 pixels. A white background is helpful if the logo is irregularly shaped.
2. Name the file logo150x50.jpg.
3. Copy the logo150x50.jpg into the ThinManager folder (**C:\Program Files\Automation Control Products\ThinManager\Reports** by default).
4. Open the report to see the change.



Report with New Company Logo

The new logo will be displayed on all reports.