



## Screen Saver Login

Use the **F1** button on any page of a ThinManager wizard to launch Help for that page.

Visit [www.thinmanager.com/TechNotes/Intro/Manuals.shtml](http://www.thinmanager.com/TechNotes/Intro/Manuals.shtml) to download the full Manual or the ThinManual.

Windows 2003 applies a secure screen saver to user accounts by default. An idle session will have a screen saver that requires a login to re-access the session. This can be difficult if you are using a touch screen without a keyboard.

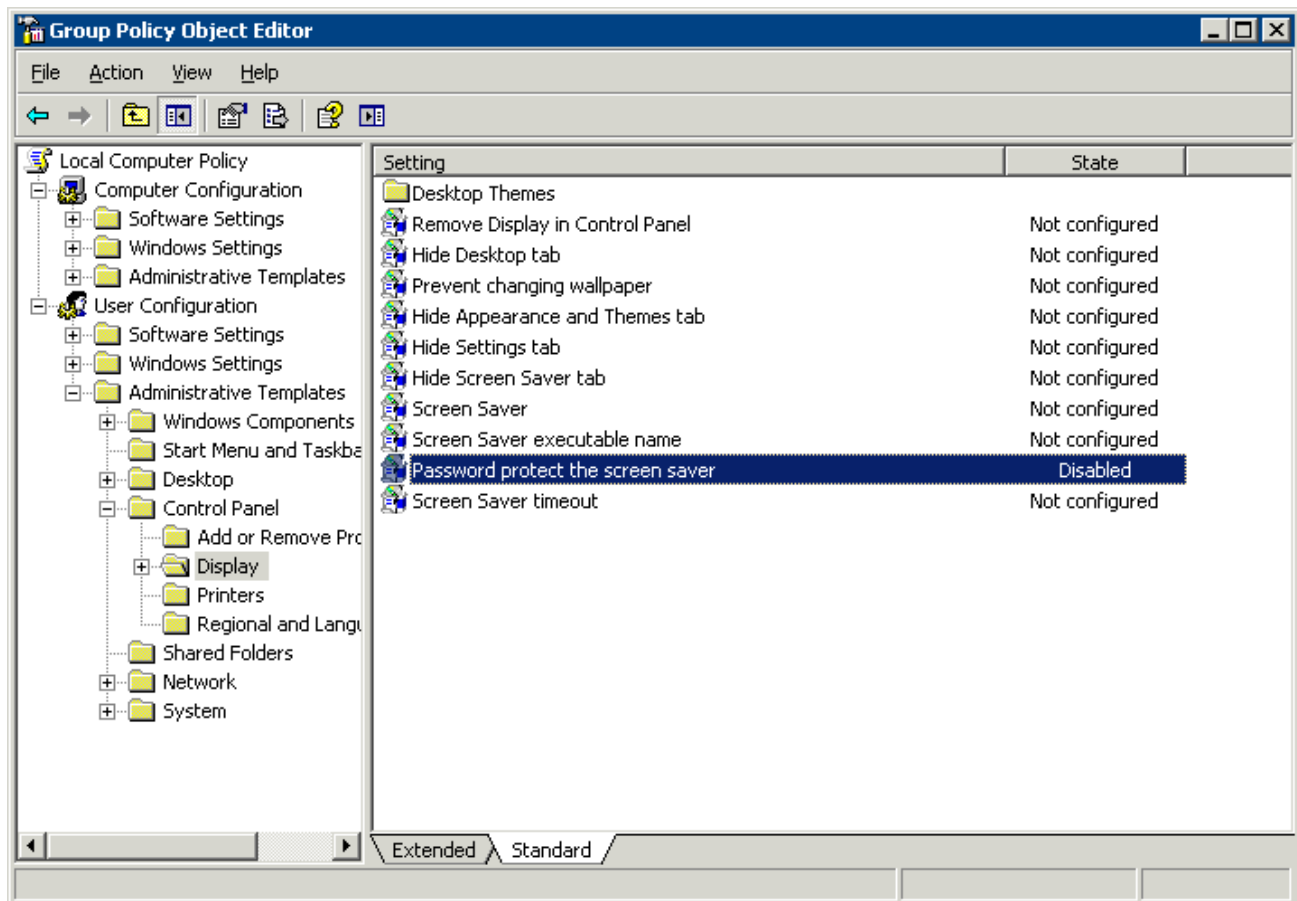
Although you could login as each user and disable the screen saver individually it is easier to change a setting in the group policy on the terminal server to fix the issue for all users at once.

Open the group policy object editor by typing `gpedit.msc` at a command prompt.

Navigate to the User Configuration | Administrative Templates | Control Panel | Display.

There are several settings that can be used:

- **Screen Saver** – Disabling this will eliminate any screen saver. You can add the Screen Saver module to ThinManager Ready thin clients to use an ACP screen saver.
- **Password protect the screen saver** – Disabling this while leaving the Screen Saver enabled or not configured will allow the screen saver to run but will eliminate the login requirement to clear the screen saver.



A searchable copy of the group policy is at [www.thinmanager.com/TechNotes/Microsoft/GroupPolicy.shtml](http://www.thinmanager.com/TechNotes/Microsoft/GroupPolicy.shtml).