



## Video Modules

Use the **F1** button on any page of a ThinManager wizard to launch Help for that page.

Visit [www.thinmanager.com/TechNotes/Intro/Manuals.shtml](http://www.thinmanager.com/TechNotes/Intro/Manuals.shtml) to download the full Manual or the ThinManual.

### Video Modules are Automatic

Video modules are different than other modules in ThinManager 3.X. They can't be added to the individual terminal configuration. When a terminal connects to ThinManager during boot up the terminal will automatically download the proper video module from ThinManager.

### Updating a Video Module

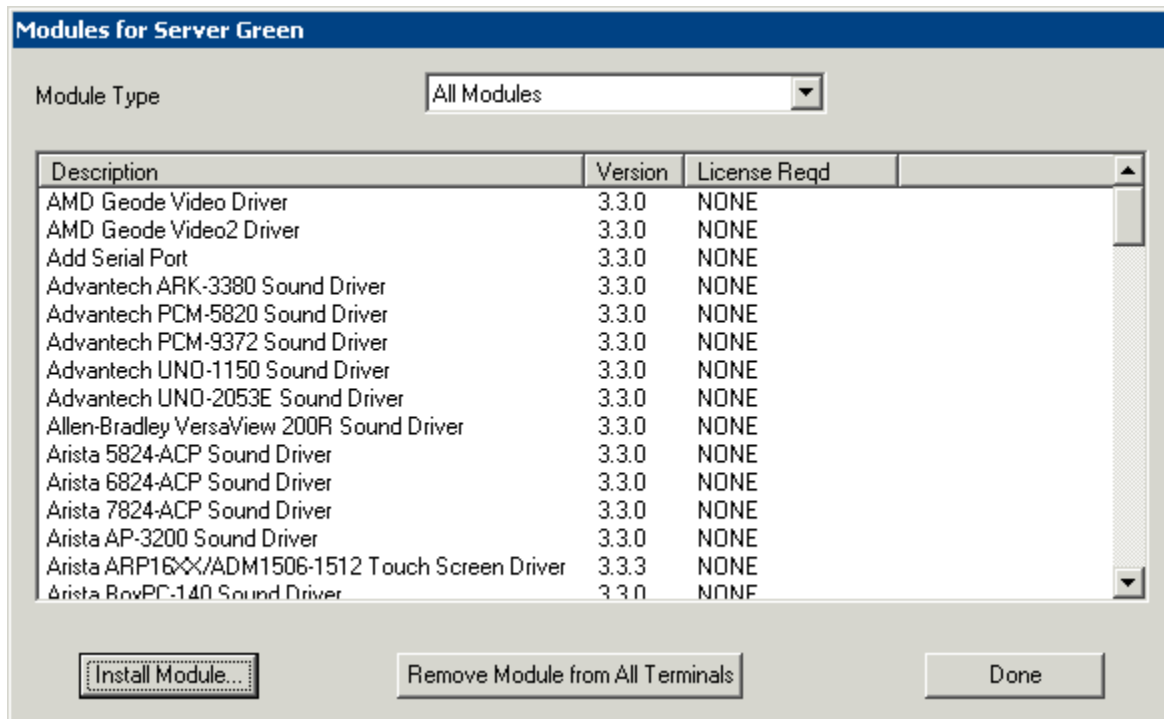
Updating video modules is normally automatic because each ThinManager installation CD and service pack will install and update ThinManager with the versions of the modules available at that time. Occasionally new hardware or new firmware is released that requires the modules to be updated.

The module update process has two steps:

1. Download the latest modules from [www.thinmanager.com/support/downloads.shtml](http://www.thinmanager.com/support/downloads.shtml).
2. Add the modules to ThinManager using **Install > Modules** from the ThinManager menu.

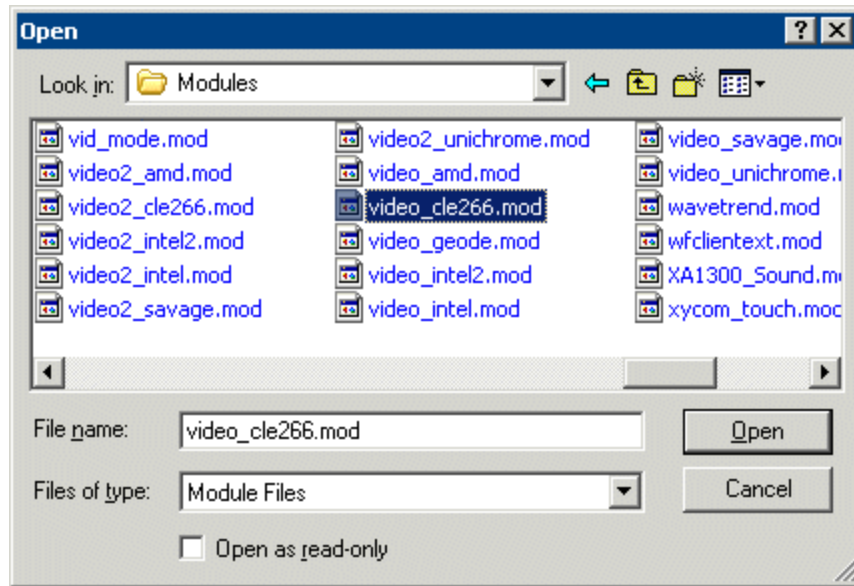
### Installing a Module

Open the **Modules** window by selecting **Install > Modules** from the ThinManager menu.



Module Window

Select the **Install Module...** button. This will open a file browser.



*Module File Browser*

Use the file browser to navigate to where you saved the downloaded module. Highlight it and select **Open**. The module will be installed or updated and the browser will close.

Repeat as needed to update as many modules as you need.

## **Video2 versus Video Modules**

Most modules are available as a Video and as a Video2 module. Firmware v3.0 through v3.2 use Video modules while firmware v3.3 and later use Video2 modules.

Since the terminal automatically loads the video modules this isn't important to you. Just make sure both module types are installed in ThinManager.