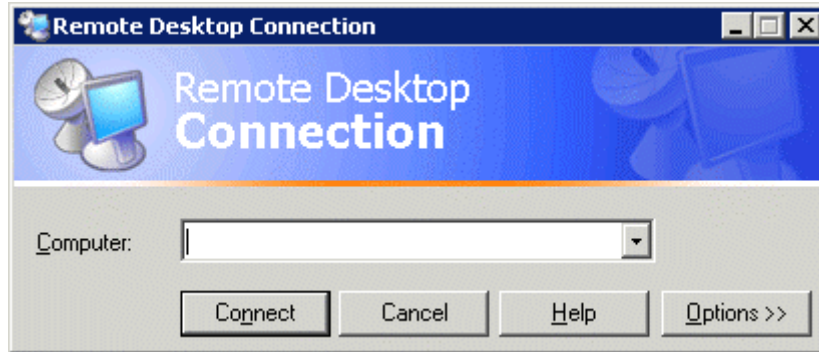




RDP Without ThinManager

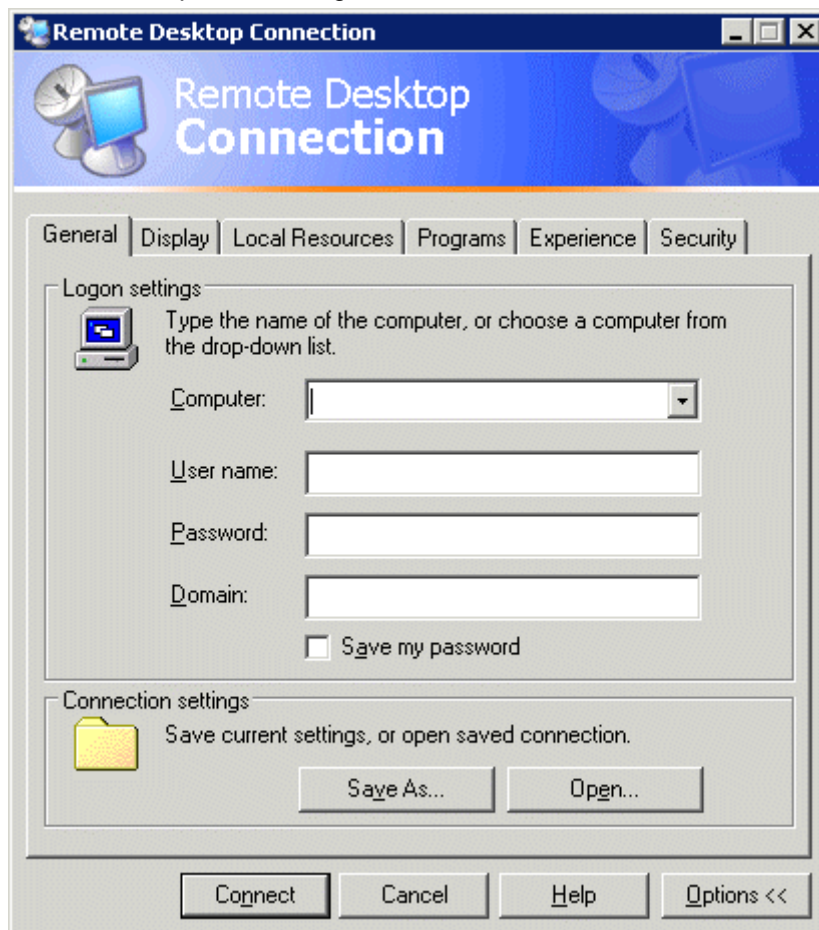
Connecting to a terminal server without using ACP ThinManager requires the configuration of each connection to each terminal server on each client PC.

Launch the Remote Desktop Connection wizard by selecting **Start > Programs > Accessories > Communications > Remote Desktop Connection**.



Remote Desktop Connection Window

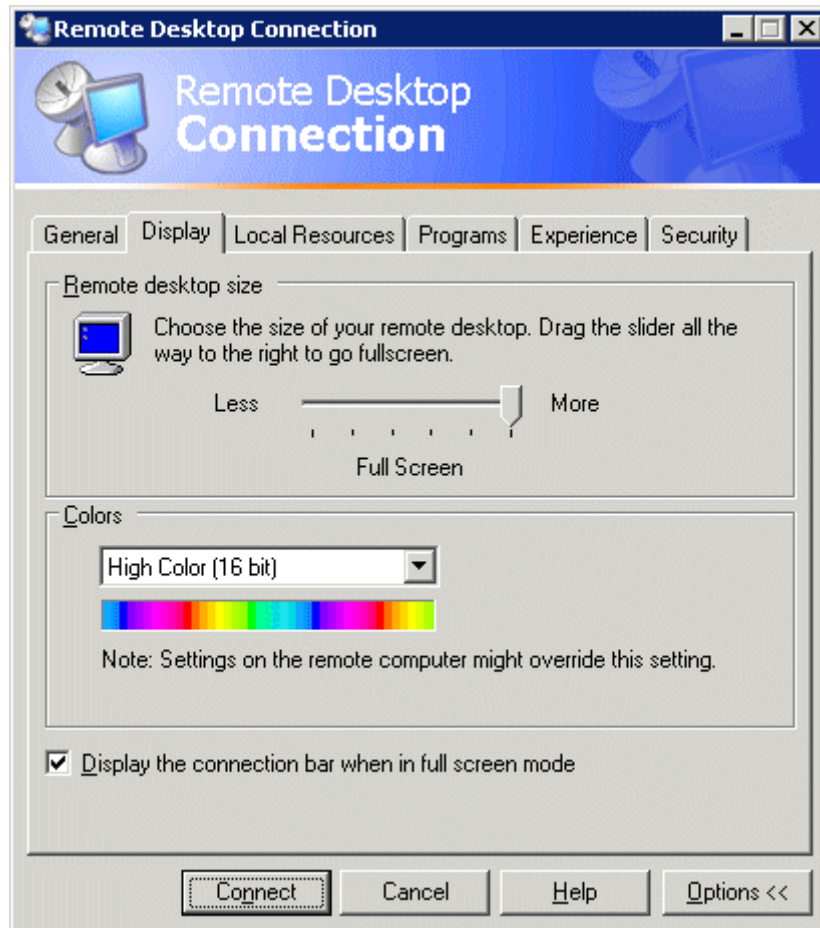
Select the **Options>>>** button to open the configuration wizard.



Remote Desktop Connection – General Tab

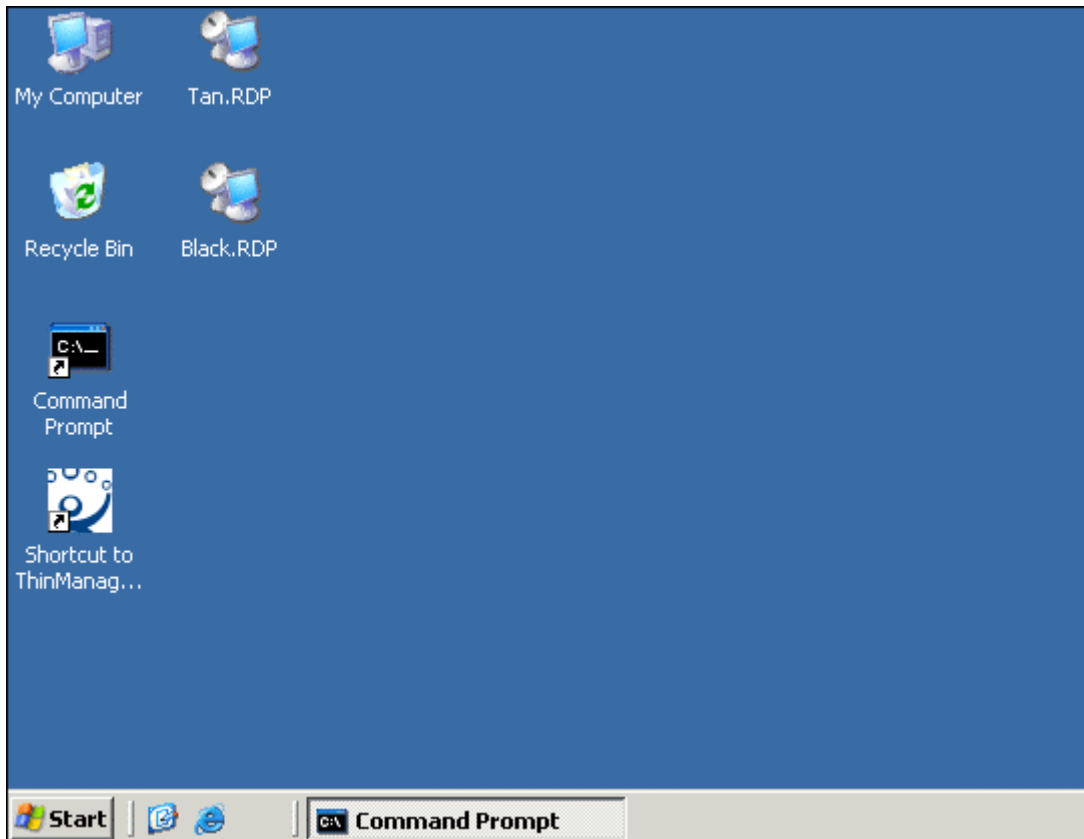


The Remote Desktop Connection wizard has several tabs for configuring the settings.



Remote Desktop Connection – Display Tab

Once the connection has its desired settings it can be saved to the desktop using the **Save As** button on the **General** tab.

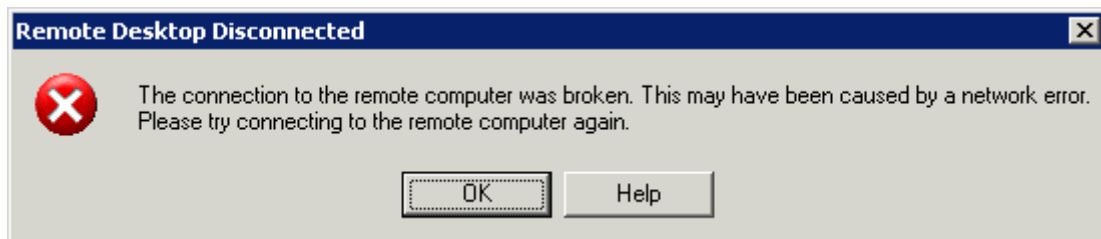


Desktop With RDP Connection Icons

A user needs to click on the connection icon to start the RDP connection to the appropriate terminal server. The PC will connect to the terminal server and start according to the configuration.

Failover

If a terminal server fails the session will quit functioning. Eventually a message box will be displayed telling the user to reconnect.



Disconnection Warning

When the session is closed the desktop will be displayed.

To failover to a backup terminal server the user will need to manually select another connection icon and launch the connection to a backup terminal server.



Contrasts between Microsoft Method and ThinManager

Issue	Remote Desktop Connection	ACP ThinManager
Configuration	Configured at each and every client	Configured at a central location
Security	User can open and change the settings at the local machine	Only the administrator can make changes
Failover	User needs to manually select backup session	Terminal automatically switches to backup without user input