



Initiate Calibration at Touch Screen

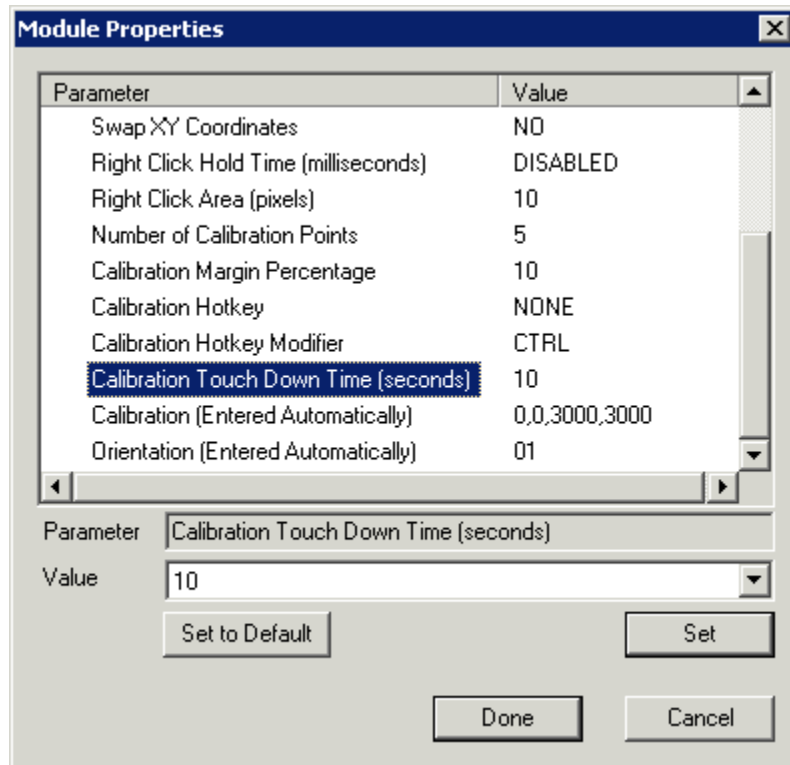
Use the **F1** button on any page of a ThinManager wizard to launch Help for that page.

Visit www.thinmanager.com/TechNotes/Intro/Manuals.shtml to download the full Manual or the ThinManual.

ThinManager Touch Screen Modules have a parameter to allow the calibration program to be initiated by a 10, 15, or 20 second touch to the touch screen.

Open the **Terminal Configuration Wizard** for the terminal by double-clicking on it in the ThinManager tree. Navigate to the **Module Selection Page** by selecting the **Next** button.

Highlight the touch screen module and select the **Configure** button to launch the **Module Properties** window.



Calibration by Touch

When the **Module Property** window is open for a touch screen module, set the **Calibrate Touch Down Time (seconds)** parameter to 10, 15, or 20 and select the **Set** button to apply any value change for a parameter.

Select the **Done** button to accept the changes and close the **Module Property** window. Select the **Finish** button on the **Module Selection** page of the Terminal Configuration Wizard and restart the thin client to apply the changes.

To initiate the calibration program touch any non-active spot on the screen and hold the finger for the number of seconds selected.

Note: Using the **Calibrate Touch Down Time (seconds)** parameter prevents the usage of both the Application Group Selector (drop-down) and the Right-Click on touch (Right Click Hold Time parameter).