



Sending Messages

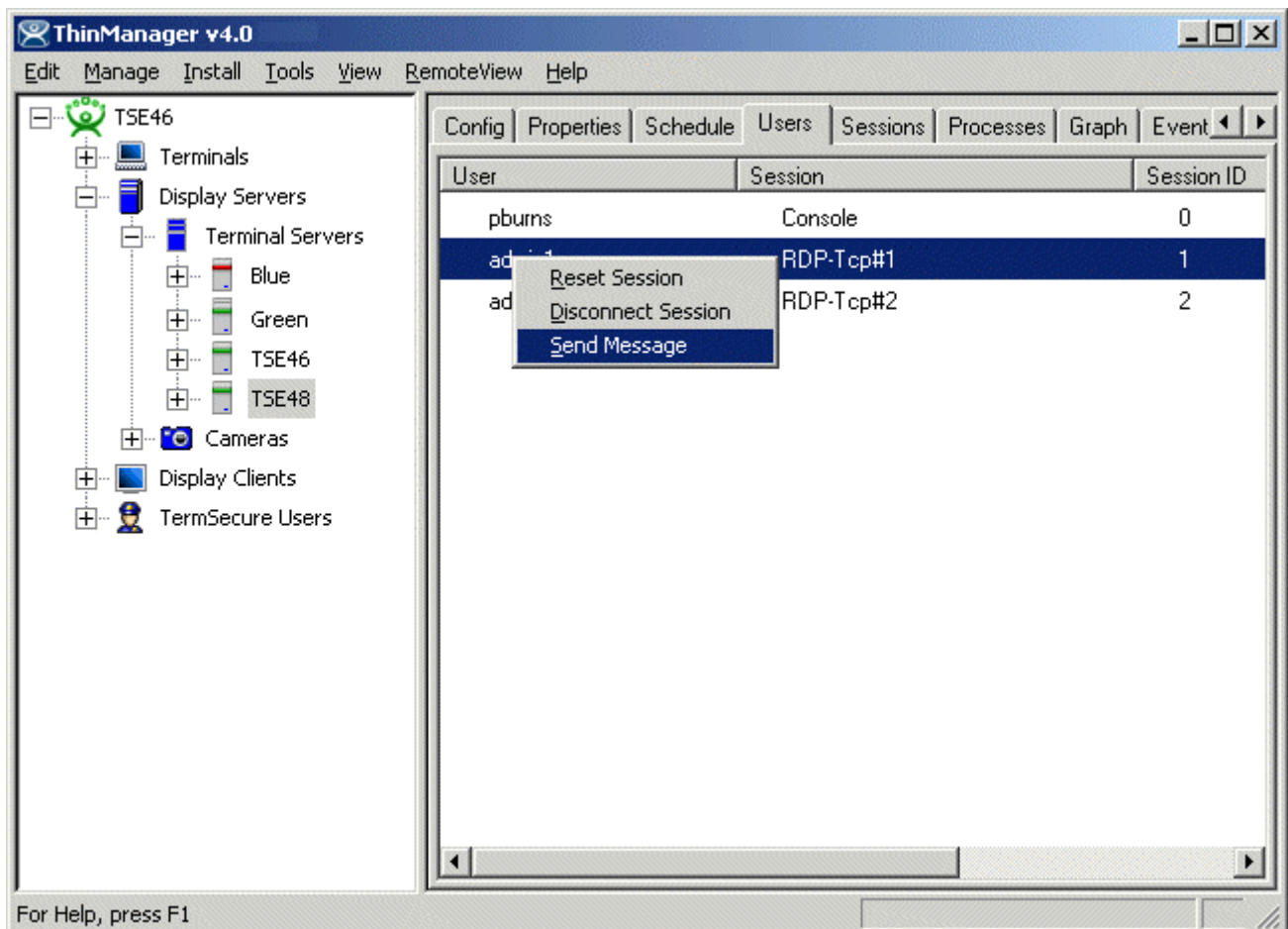
Use the **F1** button on any page of a ThinManager wizard to launch Help for that page.

Visit www.thinmanager.com/TechNotes4/01_Intro/Manuals.shtml to download the manual, manual chapters, or the abridged ThinManual.

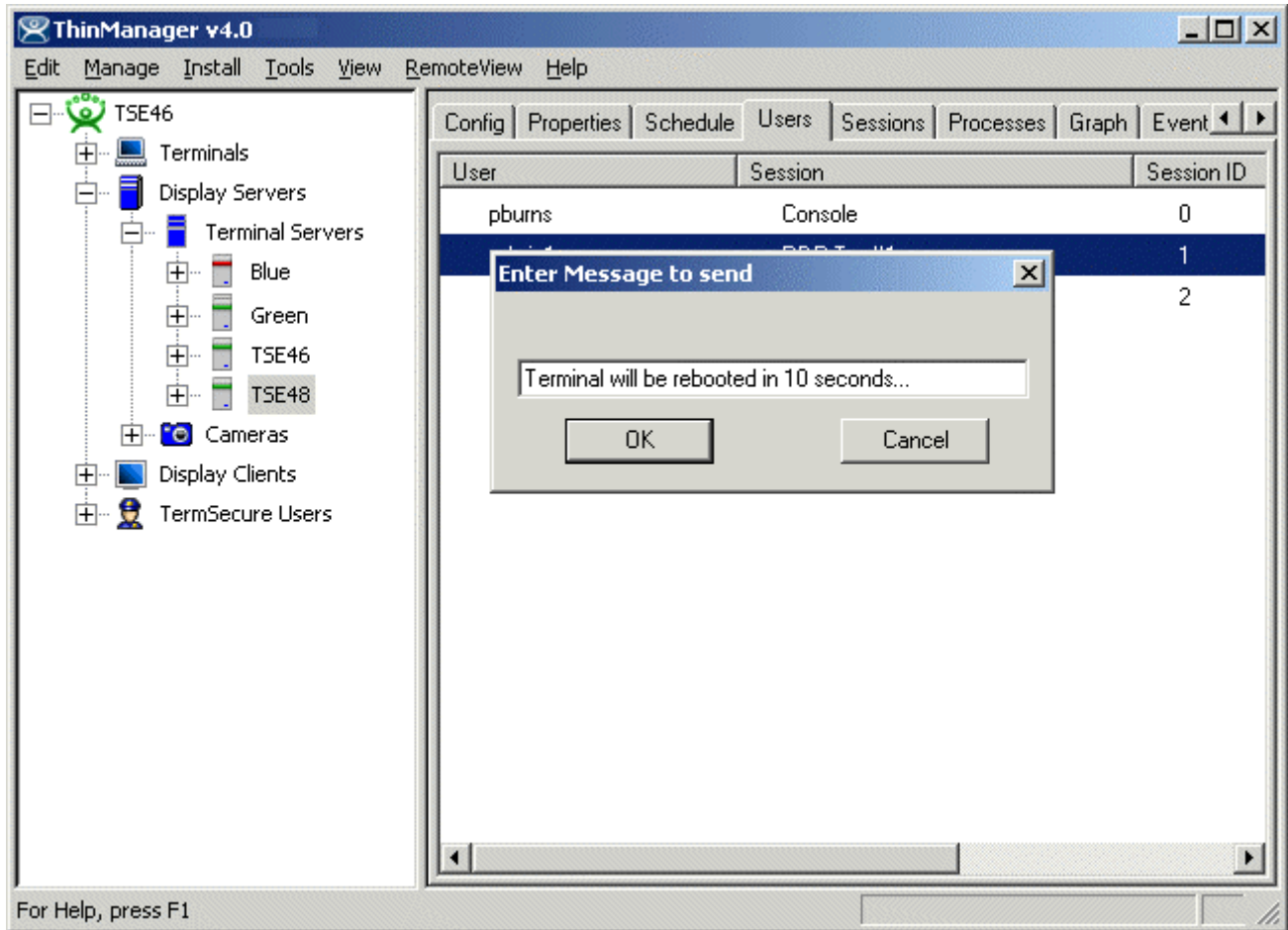
Messages can be sent from ThinManager to sessions on terminals.

To send a message In ThinManager:

- 1) Highlight the terminal server that the session is on.
- 2) Select the User tab of the Detail pane.
- 3) Highlight the user.
- 4) Right click and select **Send Message**.



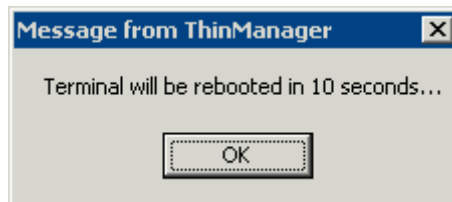
User Tab for a Terminal Server



Message Window

A message box will be displayed.

- 5) Type the message into the message box.
- 6) The message will be sent when the **OK** button is selected.



Terminal Message

A message box will appear in the session and show the message sent from ThinManager.