

# Hotkeys

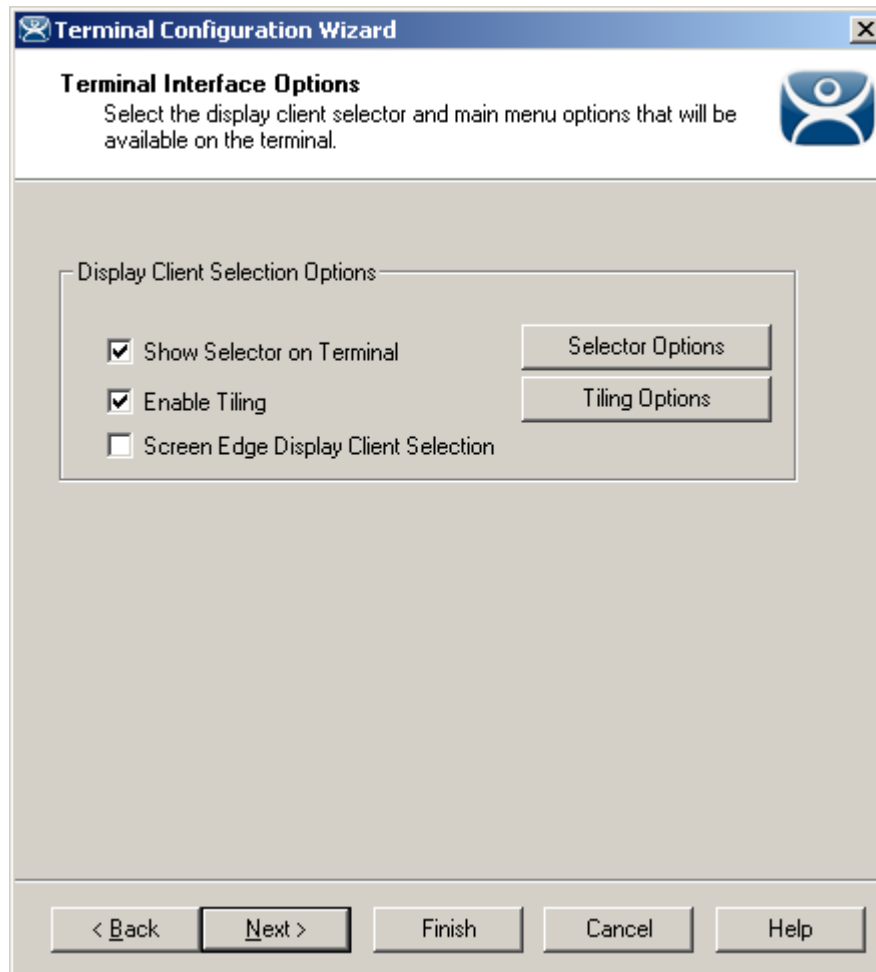
ThinManager provides hotkeys for switching between Display Clients, initiating SessionTiling, and other functions.

---

## Terminal Configuration Wizard Hotkeys Display Clients

The Terminal Configuration Wizard has several hotkeys that can be configured

## Terminal Interface Options Hotkeys



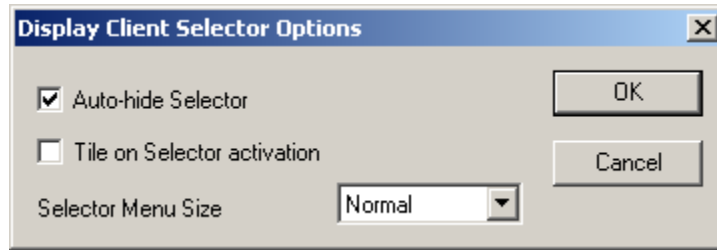
*Terminal Interface Options Page*

A terminal using multiple Display Clients will need to have a method to switch between sessions. This is configured on the Terminal Interface Options page.

**Group Selector Options** allow on-screen switching of sessions.

- **Show Group Selector on Terminal** - This checkbox, if selected, will display an on-screen drop-down menu that can be activated by mouse.
- **Enable Tiling** – This checkbox, when selected, allows the Display Clients to be tiled on the monitor to provide an overview of all the sessions at once. See SessionTiling Options for details.
- **Screen Edge Group Selection** - This checkbox, if selected, will activate a feature that will switch windows if the mouse is moved off screen.

The **Selector Options** button will launch the **Group Selector Options** window that allows configuration of the on-screen Group Selector bar.



*Group Selector Options Window*

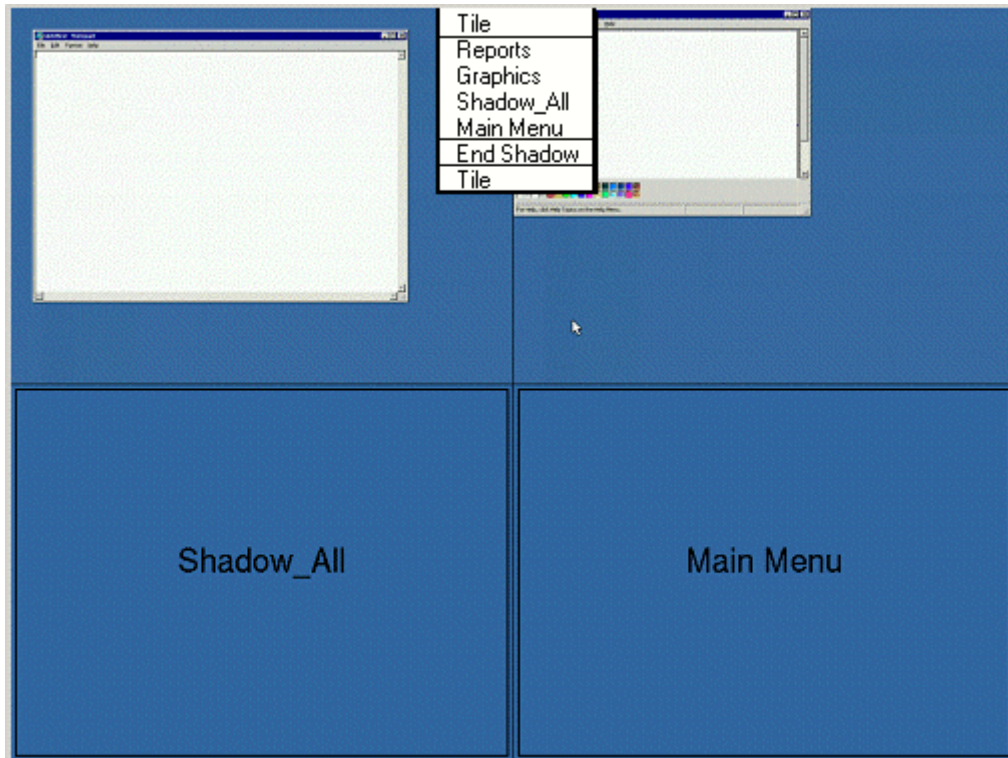
The Group Selector Options window has several settings.

- The **Auto-hide Group Selector** checkbox will hide the Group Selector until the mouse is moved to that space.
- The **Tile on Group Selector activation** checkbox, when selected, will tile the Display Clients when the auto-hid selector is chosen. This allows the user to select from the available sessions.
- The **Group Selector Menu Size** drop-down box allows the setting of the size of the Group Selector font.

Select the **OK** button to accept changes or the **Cancel** button to close.

### **Session Tiling Options**

Selecting the **Enable Tiling** checkbox on the **Terminal Interface Options** page of the **Terminal Configuration** wizard will allow the sessions to be tiled for selection.



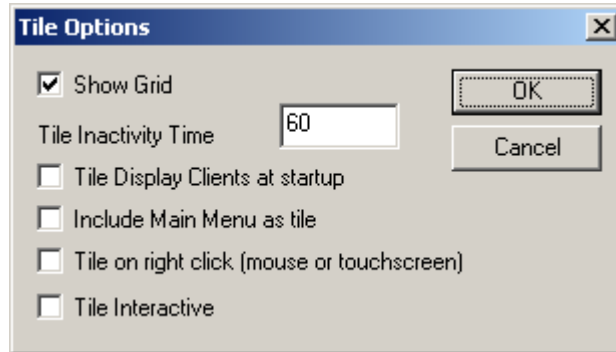
*Tiled Sessions on a Terminal*

Once the sessions are tiled the session selection can be made by:

- Using the Group Selector, if selected on the **Terminal Interface Options** page.

- Clicking on the desired session if the **Tile Interactive** checkbox is unselected on the **Tile Options** page.
- Right clicking on the desired session if the **Tile on right click (mouse or touchscreen)** checkbox is unselected on the **Tile Options** page.

The **Tiling Options** button will launch the **Group Selector Options** window that allows configuration of the on-screen Group Selector bar.



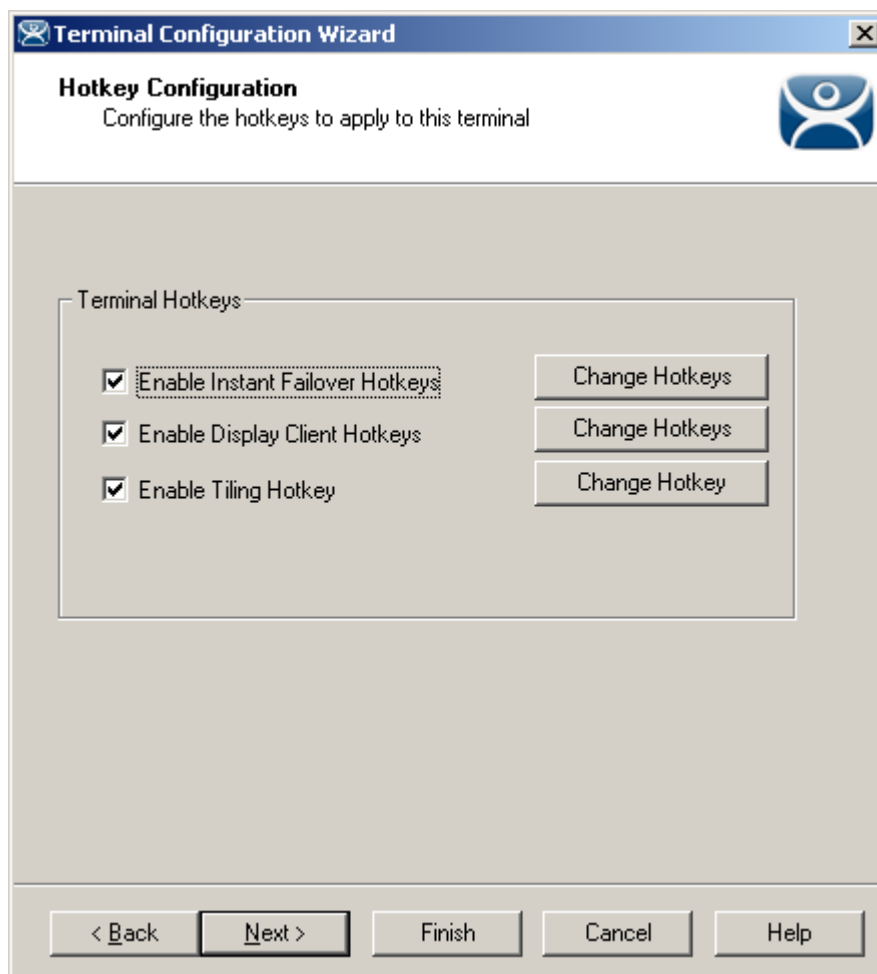
*Tile Options*

The **Tile Options** window has several settings.

- **Show Grid** – This checkbox, when selected, will show the tiled sessions in a grid with each grid labeled with the session name as while the session is loading.
- **Tile Inactivity Time** – This field sets the length of time that the terminal screen will stay focused on a selected session before reverting back to a tiled state due to inactivity.
- **Tile Display Clients at startup** – This checkbox, when selected, will show the sessions tiled when the terminal first connects to its sessions.
- **Include Main Menu as tile** – This checkbox, when selected, will include a session displaying the TermSecure Main Menu.
- **Tile on Right click (mouse or touchscreen)** - This checkbox, when selected, will initiate tiling when a session is right clicked.
- **Tile Interactive** – This checkbox, when selected, will allow a user to click into a tiled session and control it interactively without switching focus to a single session. To focus on a single session use the Group Selector Dropdown or the tiling hotkey (**CTL + T**), if enabled.

Select the **OK** button to accept changes or the **Cancel** button to close.

## Hotkey Configuration

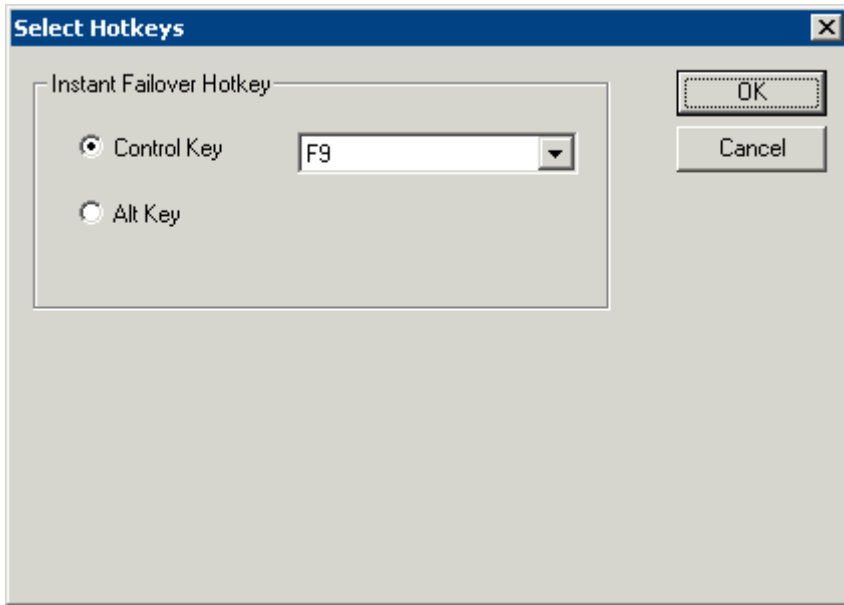


Hotkey Configuration Page

**Terminal Hotkeys** on the **Hotkey Configuration** page allows the selection of keyboard combinations that allow switching between sessions.

- **Enable Instant Failover Hotkeys** - This checkbox, if selected, allows the hot key switching between the two active sessions of a Display Client that is using Instant Failover.
- **Enable Group Hotkeys** - This checkbox, if selected, allows the hot key switching between different sessions of a terminal using MultiSession.
- **Enable Tiling Hotkey** – This checkbox, if selected, allows SessionTiling to be activated by a hotkey combination.

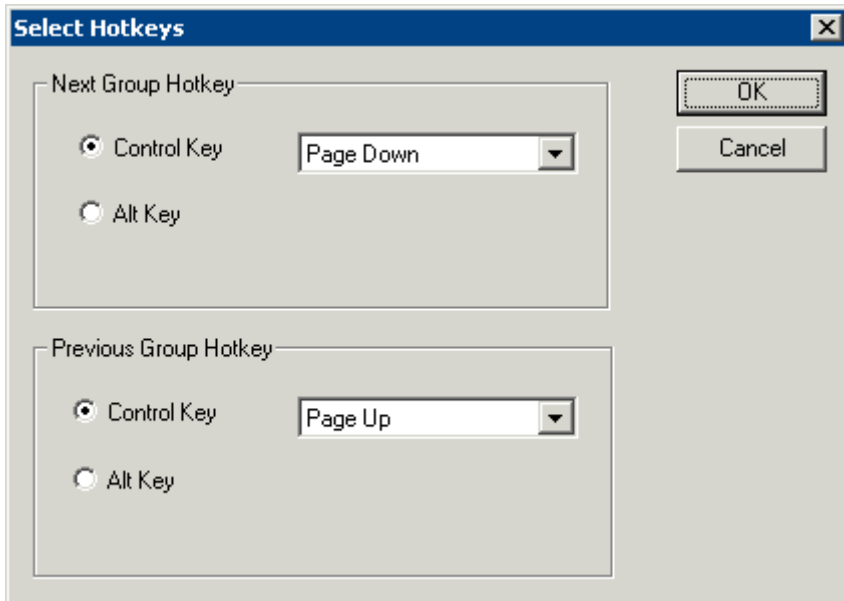
Selecting the **Change Hotkeys** button when **Enable Instant Failover Hotkeys** is selected will allow the hotkeys to be changed from the default.



Select Instant Failover Hotkeys

The default hotkey for Instant Failover switching is set to **Control+F9**. This can be changed by selecting the **Alt Key** radio button or using the drop-down to select another function key.

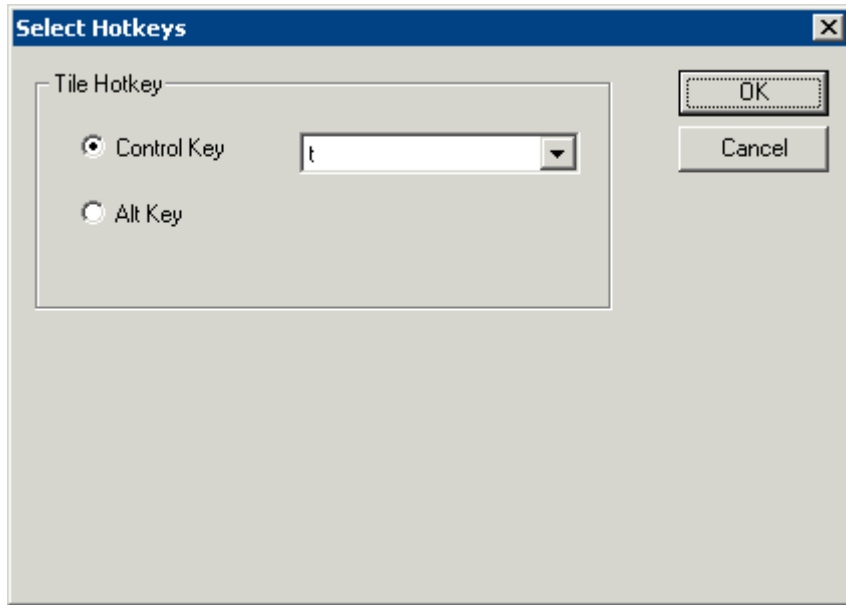
Selecting the **Change Hotkeys** button when **Enable Group Hotkeys** is selected will allow the MultiSession switching hotkeys to be changed from the default.



Select MultiSession Switching Hotkeys

The default hotkey for MultiSession switching is set to **Control+Page Up** and **Control+Page Down**. This can be changed by selecting the **Alt Key** radio button or using the drop-down to select another hot key.

Selecting the **Change Hotkeys** button when **Enable Tiling Hotkeys** is selected will allow the hotkeys to be changed from the default.



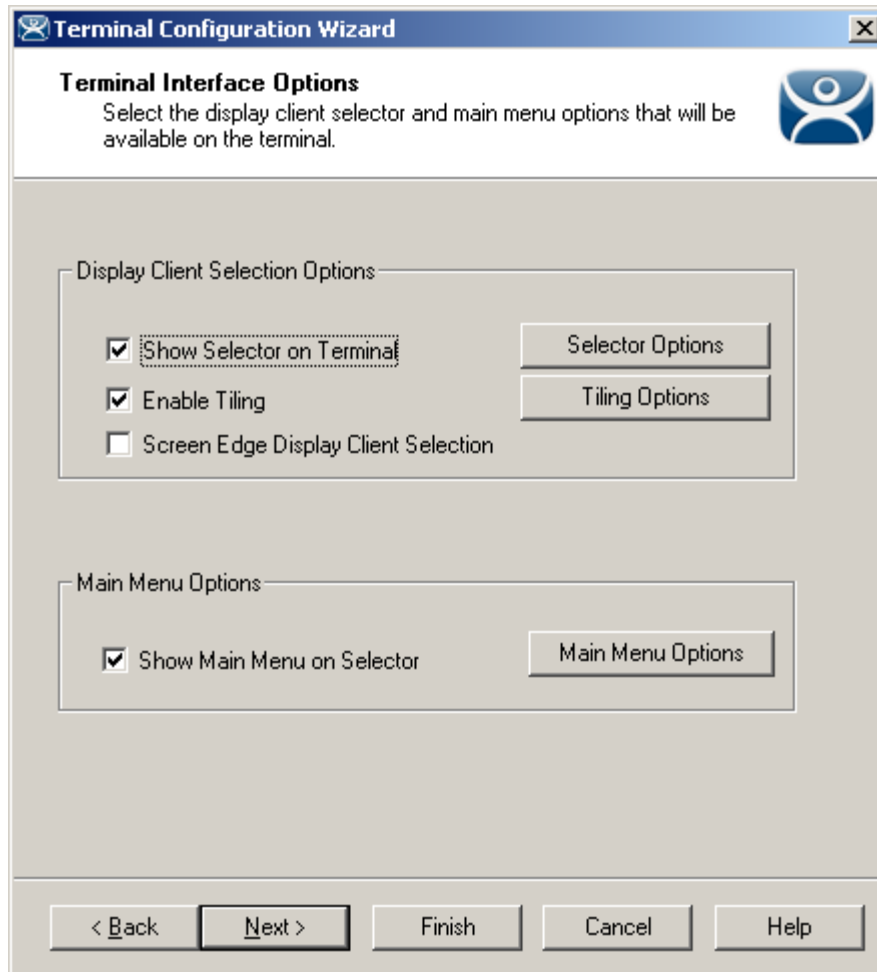
*Select SessionTiling Hotkeys*

The default hotkey for SessionTiling activation is set to **Control+t**. This can be changed by selecting the **Alt Key** radio button or using the drop-down to select another hot key.

Select the **OK button** to continue or the **Cancel** button to close without accepting changes.

### ***TermSecure Hotkeys***

When the **Enable TermSecure** checkbox is checked on the **Terminal Server Specification** page additional TermSecure functionality is enabled to access to the main menu for logging into TermSecure.

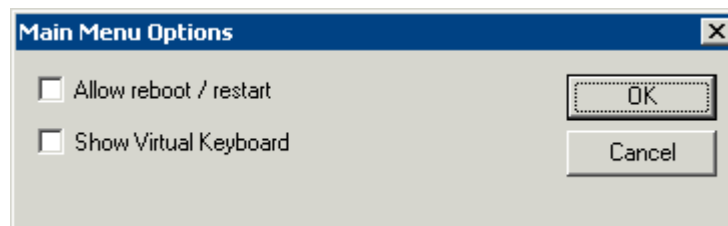


*Terminal Interface Options – TermSecure Enabled*

The Terminal Interface Options page will display the **Show Main Menu on Group Selector** checkbox.

The **Show Main Menu on Group Selector**, when selected, will add the main TermSecure menu as an option on the Group Selector dropdown.

The **Main Menu Options** button will launch a window for Main Menu settings.



*Main Menu Options*

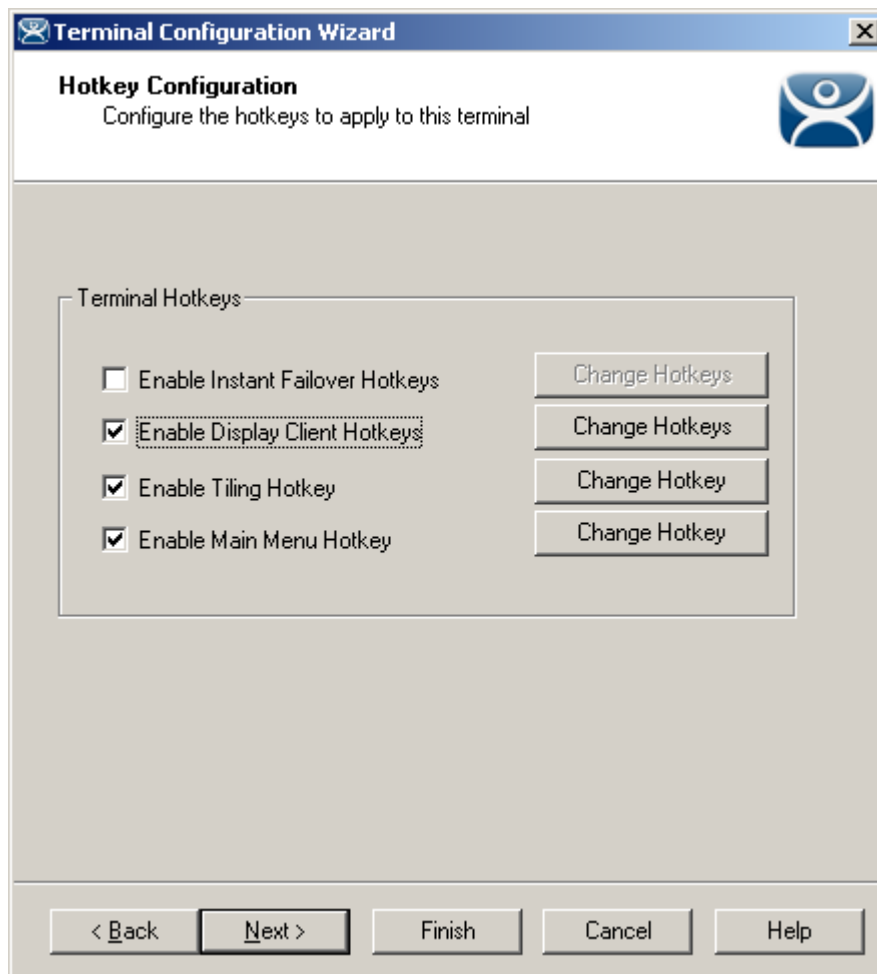
The **Main Menu Options** window has several settings.

- **Allow reboot/restart** – This checkbox, if selected, will add a **Reboot** and a **Restart** button on the main TermSecure login window.
- **Show Virtual Keyboard** – This checkbox, if selected, will prompt the display of a virtual keyboard for TermSecure logins. This is helpful for thin clients with touch screens.

Select **OK** to save setting or **Cancel** to close without saving.

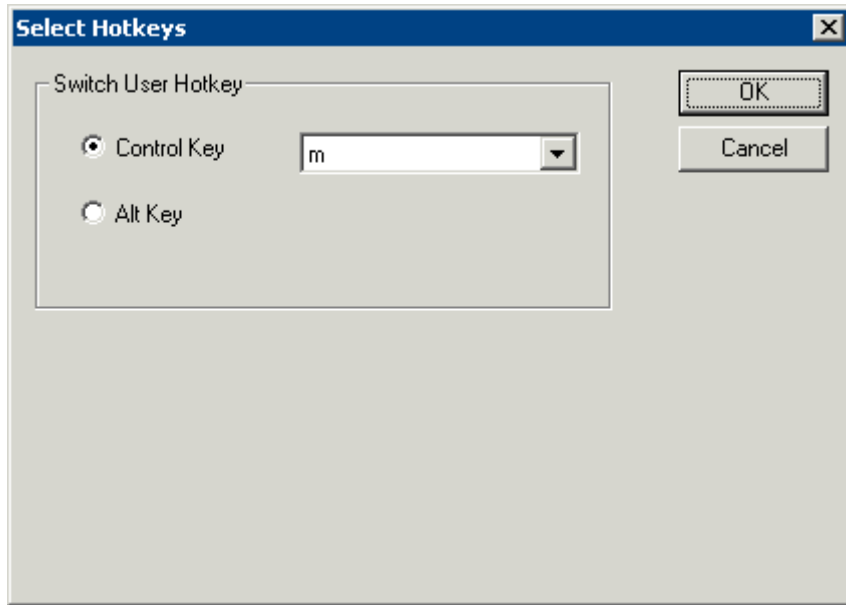


The **Hotkey Configuration** page has an additional TermSecure setting when the **Enable TermSecure** checkbox is checked on the **Terminal Server Specification** page.



*Hotkey Configuration – TermSecure Enabled*

The **Enable Main Menu Hotkey** checkbox, when selected, will allow the TermSecure Main Menu to be launched with a hotkey combination. The **Change Hotkey** button allows the default **CTL+m** combination to be changed.



*Select HotKeys Window for Main Menu*

The default hotkey for the Main Menu is set to **Control+m**. This can be changed by selecting the **Alt Key** radio button or using the drop-down to select another hot key.

Select the **OK button** to continue or the **Cancel** button to close without accepting changes.

TermSecure is covered more thoroughly at TermSecure User Configuration Wizard.

# Multiple Monitors

---

## Introduction to Multiple Monitors

ACP ThinManager has two methods of providing multiple monitors in a thin client system - the **Share Keyboard and Mouse** method and the **MultiMonitor** method.

The **Share Keyboard and Mouse** module allows several ThinManager Ready thin clients, each with a single video port, to be controlled with a single keyboard and mouse without the need of a KVM switch (Keyboard/Video/Mouse). The Share Keyboard and Mouse system ties several desktops together with a common mouse and keyboard so that the user has increased real estate under their control. Because each screen is still an independent desktop, programs don't need to be rewritten in a new resolution for a larger desktop. Instead, one would run the normal sized application on each of the desktops, allowing the operator to view different windows on different monitors.

See Share Keyboard and Mouse Modules for details on deployment.

The **MultiMonitor** method uses specific ThinManager Ready thin clients that have multiple video ports built into the hardware. Each MultiMonitor thin client can have from two to five monitors attached. These monitors can be configured to merge into an expanded desktop (called "spanned" by ACP) or can display individual desktops (called "screened" by ACP), or combinations of "spanned" and "screened" sessions.

WinTMC now supports MultiMonitor if the PC has Windows running on multiple video cards.

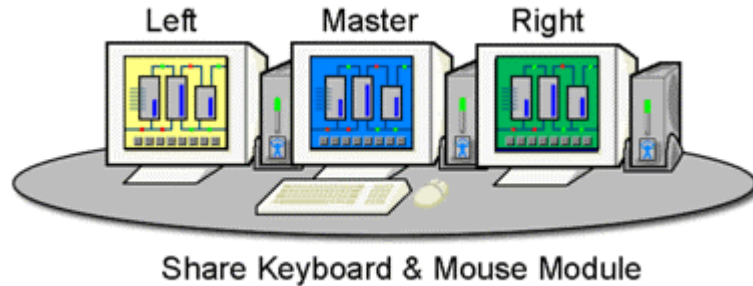
See MultiMonitor for details on deployment.

---

## Share Keyboard and Mouse Modules

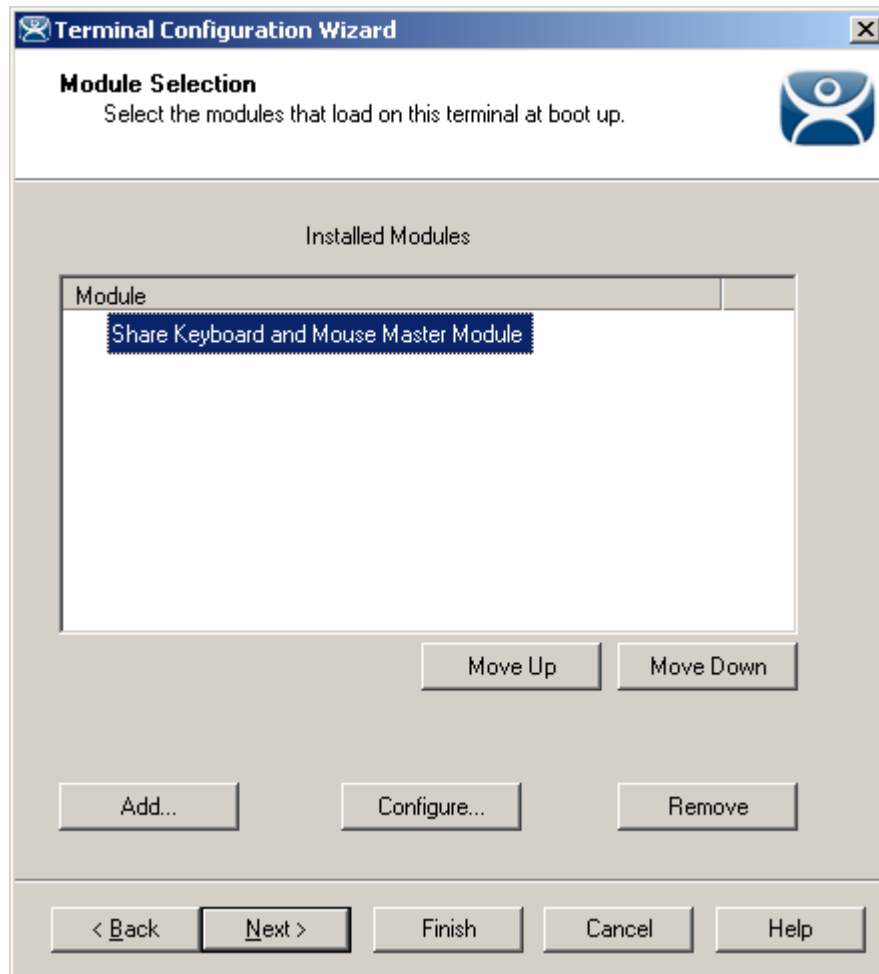
The **Share Keyboard and Mouse** module allows several ThinManager Ready thin clients to be controlled with a single keyboard and mouse without the need of a KVM switch (Keyboard/Video/Mouse).

The **Share Keyboard and Mouse** has a **Master** module that is added to the controlling terminal, and a **Slave** module that is added to the dependent terminals.



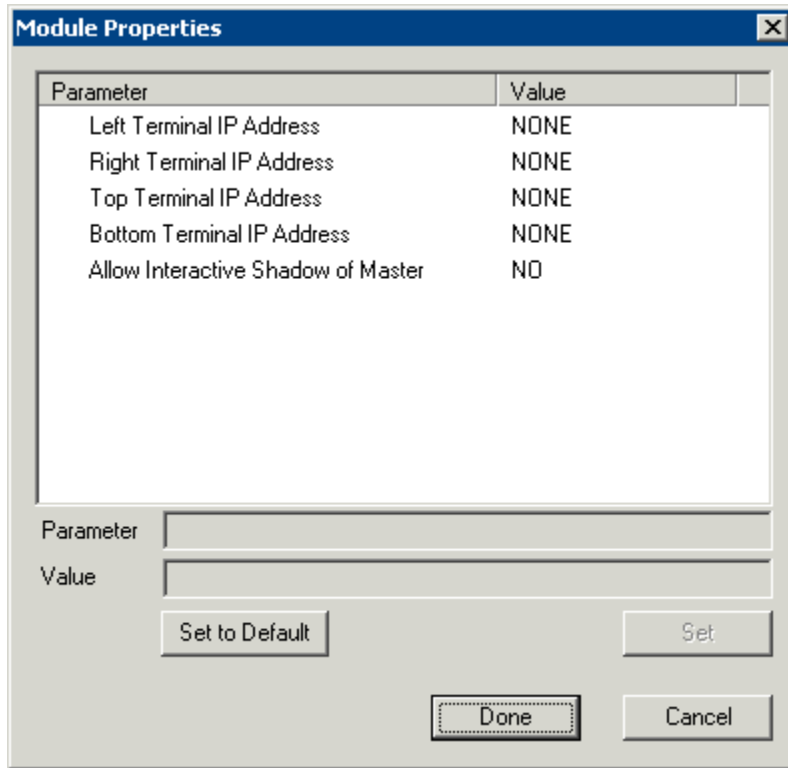
*Shared Keyboard and Mouse Layout*

The Share Keyboard and Mouse can be used by placing several monitors connected to ThinManager Ready thin clients side-by-side or top-to-bottom. The **Share Keyboard and Mouse Master module** is loaded on the center thin client. This module is configured by adding the IP addresses of the secondary slave thin clients. The other terminals receive the **Share Keyboard and Mouse Slave module**.



*Share Keyboard and Mouse Master Module*

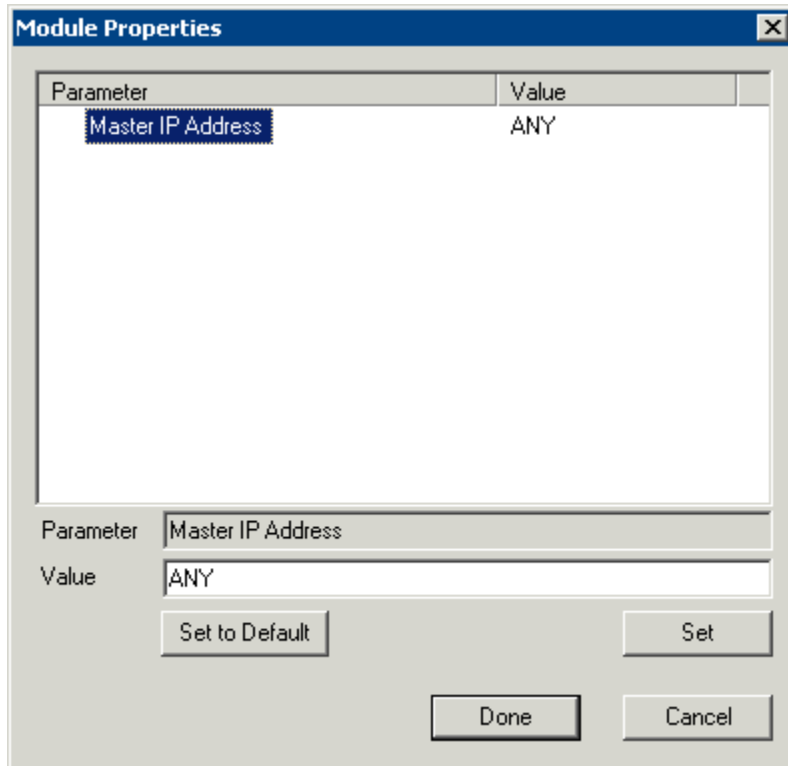
Once the **Share Keyboard and Mouse Master Module** is added to a terminal, it can be configured by highlighting it in the **Installed Module** window and selecting the **Configure** button.



*Share Keyboard and Mouse Master Module Properties*

- **Left Terminal IP Address** - Enter the correct IP address for the Slave terminal on the left of the master terminal, if used, and select the **Set** button.
- **Right Terminal IP Address** - Enter the correct IP address for the Slave terminal on the right of the master terminal, if used, and select the **Set** button.
- **Top Terminal IP Address** - Enter the correct IP address for the Slave terminal on the top of the master terminal, if used, and select the **Set** button.
- **Bottom Terminal IP Address** - Enter the correct IP address for the Slave terminal on the bottom of the master terminal, if used, and select the **Set** button.
- **Allow Interactive Shadow of Master** - Normally a terminal with the master module loaded is blocked from interactive shadow. If you want to allow interactive shadowing on the master, highlight the **Allow Interactive Shadow of Master** parameter, select **Yes** from the **Value** drop-down, and select the **Set** button.

The **Share Keyboard and Mouse Slave module** is loaded on the secondary thin clients using the same methods as other modules are loaded.



*Share Keyboard and Mouse Slave Module Properties*

- **Master IP Address** - This setting allows the slave module to be configured to connect to a specified master by entering the IP address of the master terminal, and selecting the **Set** button.

Select the **Done** button when finished.

Once the ACP Enabled thin clients are booted, the mouse on the master thin client can be moved seamlessly into the other desktops. The keyboard will be active in whatever screen the mouse pointer is on.

This allows an operator to have control of several displays with only one keyboard and mouse. The mouse movement is seamless, allowing access to displays without switching.

---

**Note:** A Master Share Keyboard and Mouse session cannot be interactively shadowed in ThinManager unless it is configured to allow it.

---

The keyboards and mice for the slave thin clients can be left attached, but stowed away until a multi-user configuration is needed.

The **Share Keyboard and Mouse Master module** is licensed for each master thin client. The **Share Keyboard and Mouse Slave module** is free. Each master module can have 1 to 4 slave units.