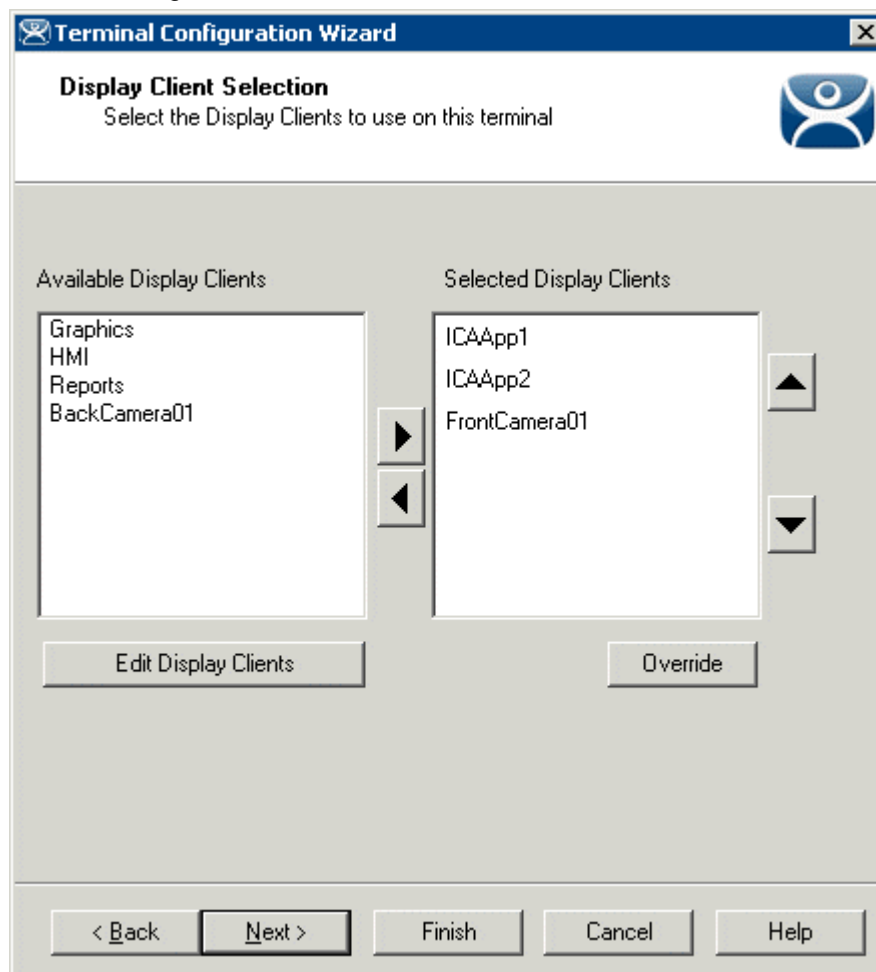


Citrix ICA

ACP ThinManager supports two client/server communication protocols, the Microsoft® RDP and the Citrix ICA. Terminals and Display Clients can be configured to use one or the other with a simple radio button.

Terminals Using Display Clients with ICA

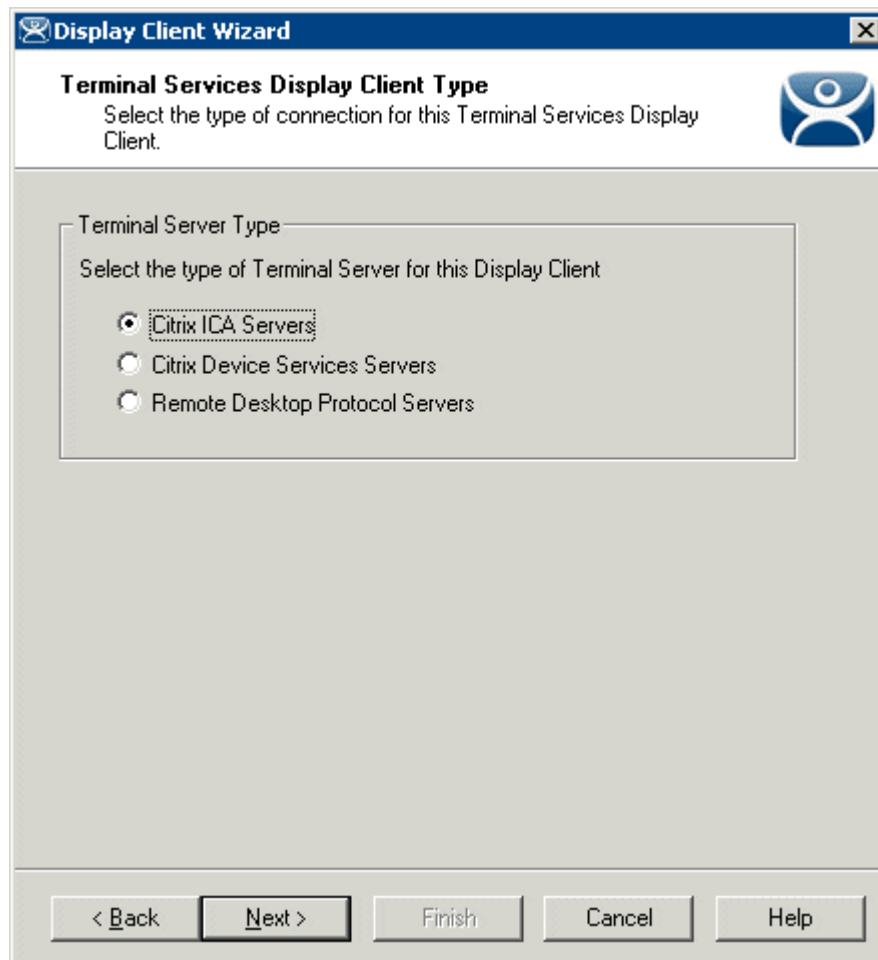
If a terminal is using the display clients to receive applications then Terminal Services Display Clients can be configured to use the ICA protocol. These display clients will show up in the Available Display Clients list on the Display Client Selection Page.



Select the desired Display Clients from the Available Display Clients list and move them to the Selected Display Clients list. The terminal will use the Display Clients selected, both RDP and ICA.

Display Client Configuration Wizard

A Display Client can be configured to use the ICA protocol on the **Terminal Services Display Client Type** page of the **Display Client Configuration Wizard**.



Terminal Services Display Client Type Page

Importance of Page: Configures the Display Client to use the Citrix ICA Protocol

Settings:

- **Citrix ICA Servers** – This allows the Display Client to use the Citrix ICA as its protocol.
- **Citrix Device Services Servers** – This allows the Display Client to use archaic Device Services Servers.
- **Remote Desktop Protocol Servers** – This uses the default Microsoft © RDP as its protocol.

Why Change from Default Settings: You need to select the **Citrix ICA Servers** to use the ICA protocol. Select **Next** to continue.

Citrix ICA Page

Display Client Wizard

Citrix ICA
Enter the ICA options for this display client

Select Encryption Level
Basic

Enter the ICA Browser Address

Use a Citrix Published Application

Enter the name of the Published Application

< Back Next > Finish Cancel Help

Citrix ICA Page

Importance of Page: Configures the Citrix Settings

Settings:

- **Encryption Level** – This drop-down sets the Citrix encryption level.

Fields:

- **ICA Browser Address** – Entering the ICA browser address aids in connection across routers, subnets, and domains.
- **Enter the name of a Published Application** - This field allows the desired published application to be designated when the **Use a Citrix Published Application** checkbox is selected.

Checkbox:

- **Use a Citrix Published Application** – This checkbox, if selected, will allow usage of Citrix Published Applications to deploy programs to the thin client.

Why Change from Default Settings: Check the **Use a Citrix Published Application** checkbox and enter the published application in the **Enter the name of a Published Application** field to use an ICA published app..

This finishes the wizard, graying out the **Next** button and activating the **Finish** button.

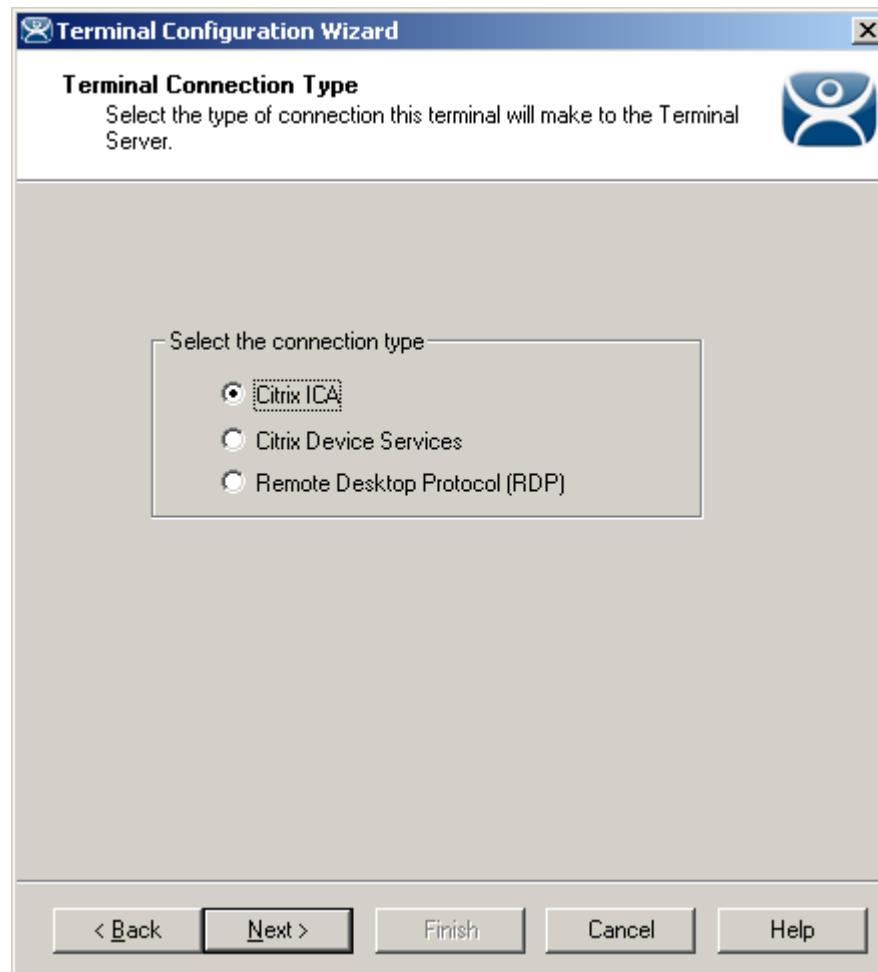
Note: Published Application should have a continuous name and not contain spaces.

If the Display Client is using a Citrix Published Application the wizard will finish with this page.

If the Display Client is not using Citrix Published Application the wizard will continue to allow the selection of Terminal Servers that are configured to use the ICA protocol. See the Terminal Server Capabilities Page for details.

Terminal Using Citrix and Individual Terminal Servers

The **Terminal Connection Type** page of the **Terminal Configuration Wizard** allows the selection of the desired Client Communication Protocol on terminals is using the legacy “Individual Terminal Servers” instead of the preferred Display Client method.

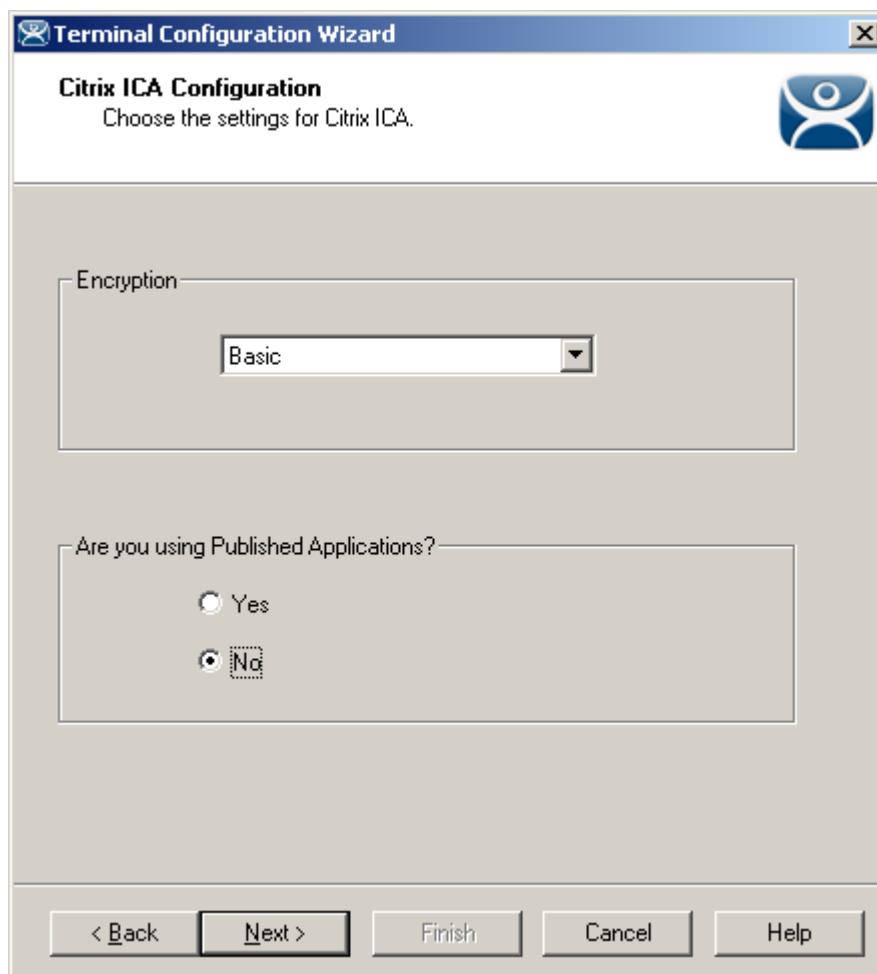


Terminal Configuration Wizard - Connection Type

Select the **Citrix ICA** radio button to use the ICA protocol.

Once the **Citrix ICA** protocol is selected the wizard will display the **Citrix ICA Configuration** page.

Citrix ICA Configuration Page



The screenshot shows a Windows-style dialog box titled "Terminal Configuration Wizard" with a sub-title "Citrix ICA Configuration". Below the sub-title is the instruction "Choose the settings for Citrix ICA." and a Citrix logo. The main area contains two sections: "Encryption" with a dropdown menu set to "Basic", and "Are you using Published Applications?" with radio buttons for "Yes" and "No" (which is selected). At the bottom are buttons for "< Back", "Next >", "Finish", "Cancel", and "Help".

Terminal Configuration Wizard - Citrix ICA Configuration

Importance of Page: Sets the ICA encryption Level and enables use of Published Applications.

Fields:

Encryption - The Encryption drop-down box sets the level of Citrix encryption.

Buttons:

- **Are you using Published Applications** – This allows the usage of Citrix Published Applications for deploying programs.

Why Change from Default Settings: Citrix ICA has a feature called **Published Applications**. If you are using Published Applications, select the **Yes** radio button, then select the **Next** button to continue to the **Citrix Published Application** dialog.

If you are not using Published Applications, select the **No** radio button, then select the **Next** button to continue to the **Terminal Server Selection** page.

Citrix Published Applications Page

Terminal Configuration Wizard

Citrix Published Applications

Enter the published application this terminal should run. Enter the ICA browser if necessary to help the terminal find the published application.

Published Application Name

ICA Browser

< Back Next > Finish Cancel Help

Terminal Configuration Wizard - Citrix Published Applications

Importance of Page: Defines what Citrix published application to have the terminal

Fields:

- **Published Application Name** – Enter the name of the desired published app you wish to run.
- **ICA Browser** – Enter the ICA master browser name, if needed.

Why Change from Default Settings: Allows use of a published application.

Enter the name of the desired Published Applications in the **Published Applications Name** field. Do not use spaces in the name when creating a Published Application for Terminal Services.

Citrix uses ICA Browsers as part of the system. Because the ICA client may have problems detecting an ICA browser across a router or switch, an **ICA Browser** field is provided for entering the name of an ICA browser.

Select the **Finish** button to create the Terminal, or select the **Next** button to rejoin the main configuration path to configure more options.

Terminals using the **Select Individual Terminal Servers** will be shown the Terminal Server Selection page where the desired terminal servers can be selected.