

Display Servers

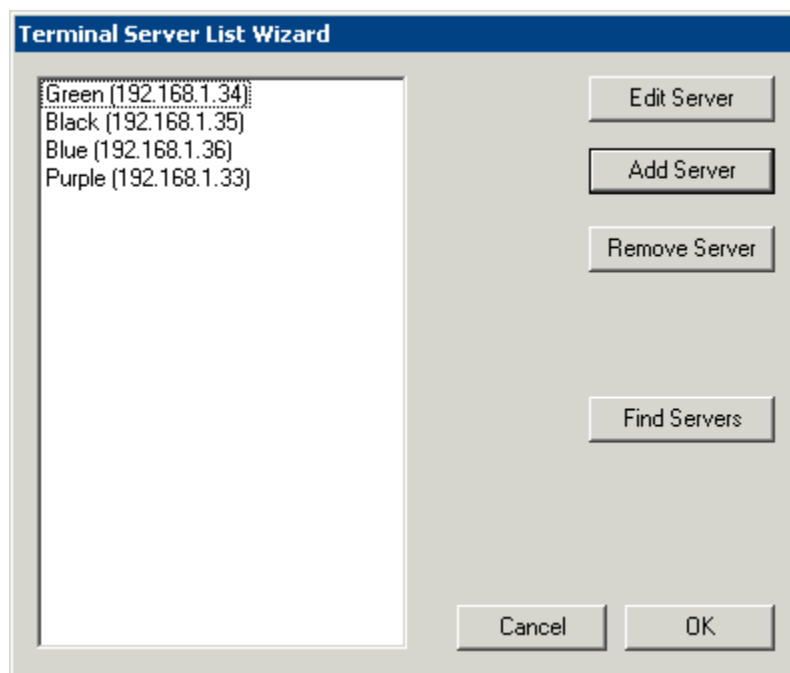
Display Servers are devices that provide content that can be displayed on the client. Examples include the traditional terminal server and IP cameras.

The Terminal Server List Wizard allows configuration of Terminal Services Display Servers. The Camera Configuration Wizard allows configuration of Camera Display Servers

Terminal Services Display Servers

The **Terminal Server List Wizard** can be launched by:

- Right clicking on the Display Servers Terminal Servers branch and choosing the **Add Terminal Server** command
- Right clicking on the Display Servers Terminal Servers branch and choosing the **Edit Terminal Server** command.



Terminal Server List Wizard

Importance of Page: This allows you to define the terminal servers that will be used within ThinManager.

Fields:

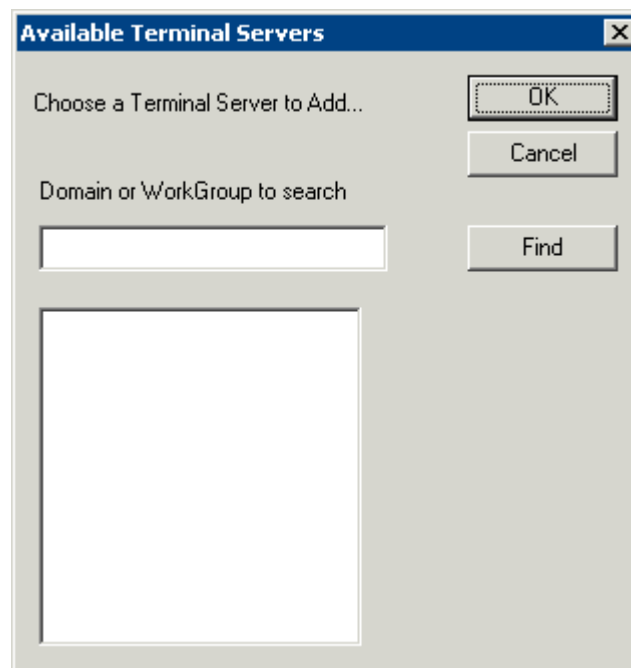
- **{Unnamed}** – The list box will contain the names and IP addresses of defined terminal servers.

Buttons:

- **Edit Server** – This will open the properties for a highlighted terminal server in the list.
- **Add Server** - This will launch the Terminal Server Configuration Wizard to allow a new terminal server to be defined.. See
- **Remove Server** – This will remove a highlighted terminal server from the list.
- **Find Servers** - This will launch the **Available Terminal Servers** window for automated terminal server addition.
- **Cancel** - This will close the wizard without action.
- **OK** – This will close the wizard after accepting changes.

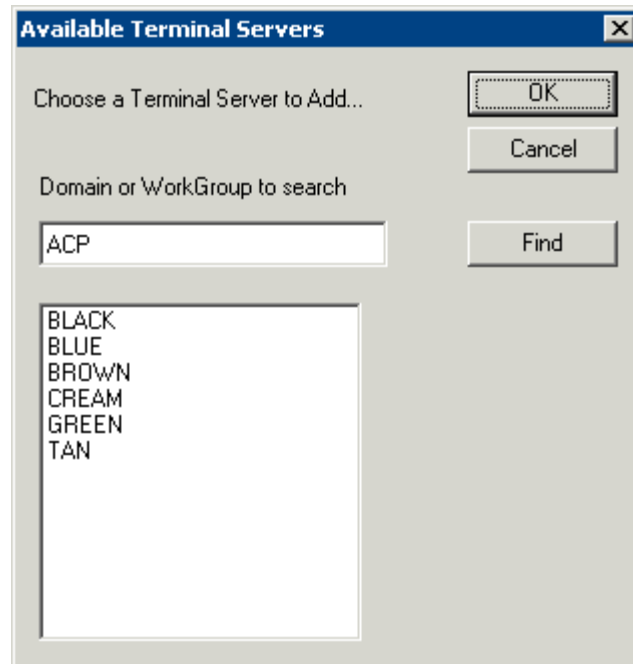
Why Change from Default Settings: The terminals require terminal servers to connect and run sessions on.

Available Terminal Servers Search



Available Terminal Server Window

The **Available Terminal Servers** window will display any Microsoft© terminal servers that are a member of the same domain or workgroup as ThinManager. Select the **Find** button to display the member servers.

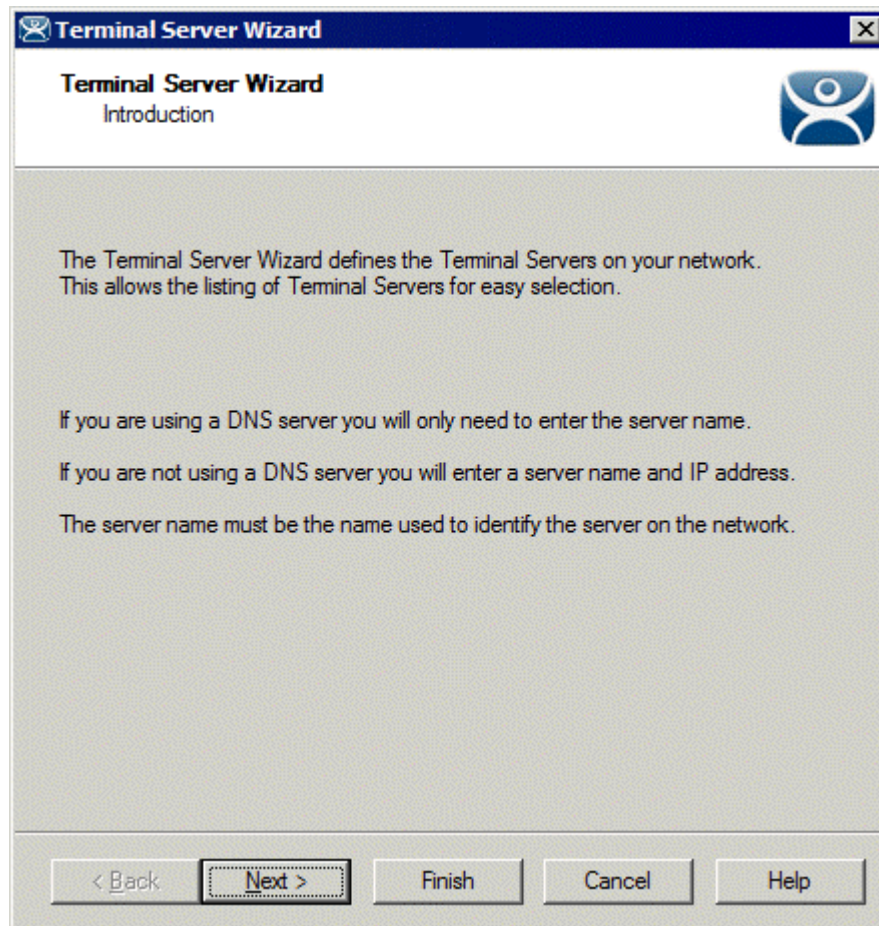


Available Terminal Server Window

The **Domain or WorkGroup to Search** field will allow ThinManager to search a different domain or workgroup. Enter the domain of workgroup to search and select the **Find** button to display the member servers.

Once the terminal servers are listed, highlight one and select the **OK** button to add it to the Terminal Server Configuration Wizard. This will launch the Introduction page of the **Terminal Server Wizard**.

Terminal Server Wizard Introduction Page



Terminal Server List Wizard Introduction

Importance of Page: This displays introductory information.

Select **Next** to continue or **Cancel** to close without saving.

Terminal Server Name Page

The screenshot shows a Windows-style dialog box titled "Terminal Server Wizard" with a close button (X) in the top right corner. The main title is "Terminal Server Name" and the instruction is "Enter the Terminal Server Name and Log In information." There is a blue icon of a person in the top right. The form contains the following fields and buttons:

- "Terminal Server Name" text box.
- "Terminal Server IP" text box containing "255 . 255 . 255 . 255" and a "Discover" button to its right.
- A "Log In Information" group box containing:
 - "Domain" text box.
 - "User Name" text box.
 - "Password" text box.
 - "Verify Password" text box.
- A "Schedule" button below the Log In Information group.
- A message "Please enter a valid IP Address" below the IP field.
- Navigation buttons at the bottom: "< Back", "Next >", "Finish", "Cancel", and "Help".

Terminal Server List Wizard – Terminal Server Name

Importance of Page: This page defines the terminal server and allows the addition of an administrative user account for increased management.

Fields:

- **Terminal Server Name** - Enter the computer name as found in the Microsoft© System Properties (NetBIOS name). The name will already be entered if the **Find** function on the **Available Terminal Servers** window was used.
- **Terminal Server IP** – Entered the IP address of the terminal server.

Login Information – Enter a Windows user account with administrative rights for the terminal server if you wish to display data from the terminal server within ThinManager. This is required to populate the User, Sessions, and Process tabs of the details pane. See Details Pane for details.

- **Domain** - Enter the domain for the computer, if it is a member of a domain.
- **User Name** – Enter the user name of the administrative account here.
- **Password** - Enter the password for the administrative account used in the **User Name** field.
- **Verify Password** – Re-enter the password for the administrative account used in the user name field. Passwords that do not match will be indicated by a warning message on the page.

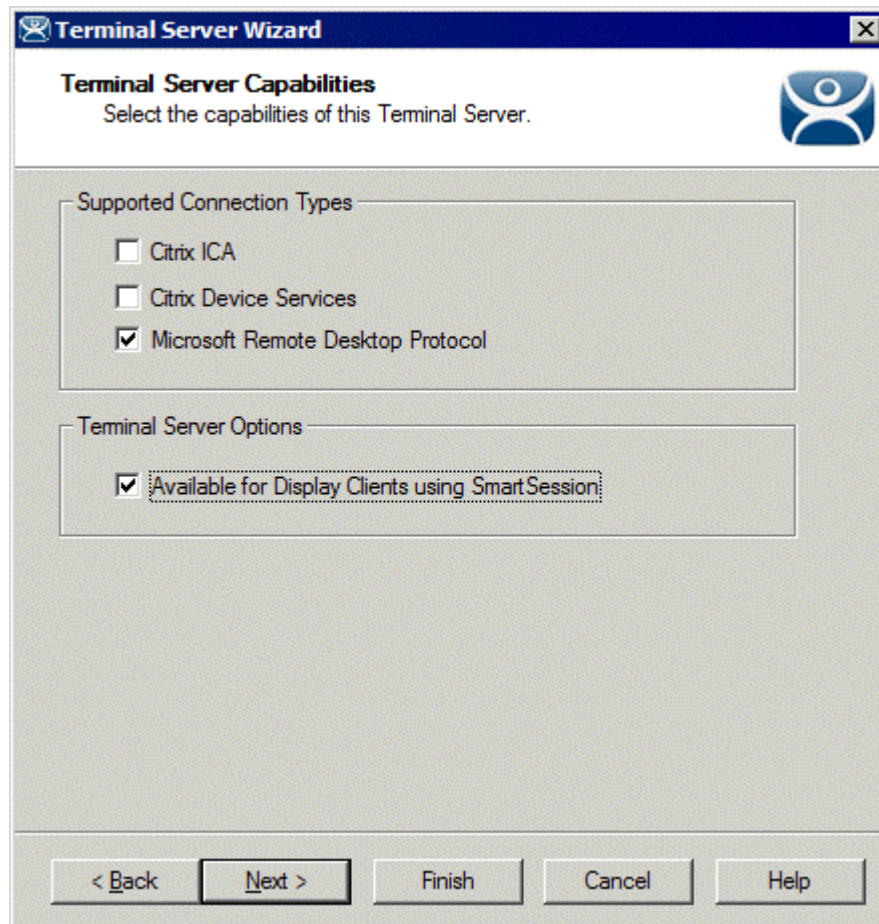
Buttons:

- **Discover** – The **Discover** button will automatically fill in the IP address for a terminal server listed in the **Terminal Server Name** field.
- **Schedule** – The **Schedule** button will launch the **Event Schedule** for the terminal server. This allows the scheduling of repeated functions like rebooting and disabling. See Scheduling for details.

Why Change from Default Settings: ThinManager uses a connection to the terminal server to pull the process, user, and session information for the detail pane tabs and to determine the load for SmartSession load balancing. Entering a username and password in the **User Name** and **Password** fields allows ThinServer to connect to the server for this data.

Select **Next** to continue, **Finish** to save and close, or **Cancel** to close without saving.

Terminal Server Capabilities Page



Terminal Server Capabilities

Importance of Page: This allows a terminal server to be used for SmartSession. It also defines what communication protocols the server can use.

Settings:

- **Supported Connections** – This is a list of client/server communication protocols that the terminal server can use.
 - **Citrix ICA** – Check this checkbox if a Citrix server-side program is installed on the terminal server to provide the ICA protocol.

- **Citrix Device Services** - Check this checkbox if Citrix Device Services is installed and licensed on the terminal server. Citrix Device Services is a legacy deployment of the ICA client but is no longer supported by Citrix. ThinManager Ready thin clients can still connect to terminal servers with Device Services, but no new Device Services terminal servers can be licensed.
- **Microsoft Remote Desktop Protocol** - RDP is installed by default on Windows Terminal Servers. Uncheck the **Microsoft Remote Desktop Protocol** checkbox if you don't want to access to the terminal server with the protocol.
- **Available for Smart Session Server** – This checkbox makes the terminal server available for Application Groups that use SmartSession to provide load balancing. See Display Client SmartSession Settings Page for more details.

Why Change from Default Settings: Add SmartSession if you want to use SmartSession. Add Citrix ICA if that is being used.

Note: Configuring a terminal server to use SmartSession uses a SmartSession license.

Select **Next** to continue, **Finish** to save and close, or **Cancel** to close without saving.

Data Gathering Page

Terminal Server Wizard

Data Gathering
Enter the Data Gathering intervals.

Data Gathering Intervals

Fast
 Medium
 Slow
 Custom

SmartSession Data Update Interval: 8 seconds

Process Update Interval: 5 seconds

Session Update Interval: 8 seconds

Data Gathering

Importance of Page: This page sets the frequency that ThinManager polls the terminal servers for user, session, and process information.

Settings:

- **Data Gathering Intervals (Fast/Medium/Slow)** - These settings set the rate of the frequency that ThinManager polls the terminal server for data.
- **Data Gathering Intervals (Custom)**- This setting allows the polling speeds to be set.
 - **Smart Session Data Update Interval** is the amount of time between the retrieval of SmartSession data, CPU usage, memory usage, and session count, from the terminal server. This setting affects the update speed of the Server Rankings used in SmartSession load balancing.
 - **Process Update Interval** is the amount of time between the retrieval of the process information on the terminal server. This setting affects the speed of the update of the process information on the Processes tab for the terminal server.
 - **Session Update Interval** is the amount of time between the retrieval of session data from the terminal server. This setting affects the speed of the update of the user information for the sessions on the Users and Sessions tabs for the terminal server.

Why Change from Default Settings: Faster rates will lead to quicker updates but will add more network traffic. Slowing down the rate will cause less traffic but will slow the update rate a little.

Select **Next** to continue, **Finish** to save and close, or **Cancel** to close without saving.

If this terminal server is used as a SmartSession server, the **Next** button will go to a SmartSession Configuration page. If this terminal server is not configured as a SmartSession server, the **Next** button will be grayed out and the **Finish** button will close the wizard.

SmartSession Configuration Page

Terminal Server Wizard
SmartSession Configuration
Enter the SmartSession limits for this Terminal Server.

CPU Utilization

Minimum %
Maximum %

Memory Utilization

Minimum %
Maximum %

Sessions

Minimum
Maximum

< Back Next > Finish Cancel Help

Terminal Server List Wizard - SmartSession Configuration

Importance of Page: This allows SmartSession data to be tweaked.

ThinManager uses the **CPU utilization**, **Memory utilization**, and **number of sessions** on the terminal server to define the SmartSession terminal server's available resources. ThinManager uses these resource values to rank the load of the SmartSession servers. ThinManager supplies this load data to the terminals to allow the terminals to connect to the terminal server with the lightest load and greatest available resources.

The **SmartSession Configuration** page allows the configuration of the three parameters that ThinManager uses to determine availability for SmartSession. ThinManager will scale the range between the Minimum field and Maximum field as 100%.

Settings - The three values used in SmartSession are:

- **CPU Utilization** – The percentage of CPU usage on the terminal server.
- **Memory Utilization** - The percentage of CPU usage on the terminal server.
- **Sessions** – The number of sessions on a terminal server.

Fields:

- **Minimum** – the value that ThinManager will use as the starting point of the load. A value below the **Minimum** is considered to be unused.
- **Maximum** – the value that ThinManager will consider the parameter as reaching 100% utilized and is unavailable.