



Terminal-to-Terminal Shadowing

Use the **F1** button on any page of a ThinManager wizard to launch Help for that page.

Visit www.thinmanager.com/TechNotes/Intro/Manuals.shtml to download the full Manual or the ThinManual.

Terminal-to-Terminal shadowing is made possible with Terminal Shadow application groups. A Terminal Shadow application groups allow a terminal to shadow another terminal without needed to run the ThinManager interface or to be logged in as an administrator. This Shadow Group can contain a specific terminal or several terminals.

Terminal Shadow Application Group

The **Application Group Wizard** can be launched by selecting **Manage > Application Group List** from the menu or by right clicking on the Application Group branch and choosing the **Add Application Group** command.

The screenshot shows a window titled "Application Group Wizard" with a close button in the top right corner. The main area is divided into sections. The top section is labeled "Group Name" and contains the instruction "Enter the Application Group name." To the right of this text is the ThinManager logo and the text "TM3". Below this is a text input field labeled "Group Name". The next section is labeled "Type of Application Group" and contains a drop-down menu with "Terminal Shadow" selected. To the right of the drop-down menu is a button labeled "Permissions". At the bottom of the main area, there is a message: "Please enter an Application Group name". The bottom of the window contains a row of five buttons: "< Back", "Next >", "Finish", "Cancel", and "Help".

Terminal Shadow Application Group - Group Name Page

Configure the Terminal Shadow Application Group by selecting **Terminal Shadow** from the **Type of Application Group** drop-down after naming the group.

Select the **Next** button to continue.



Terminal Shadow Configuration

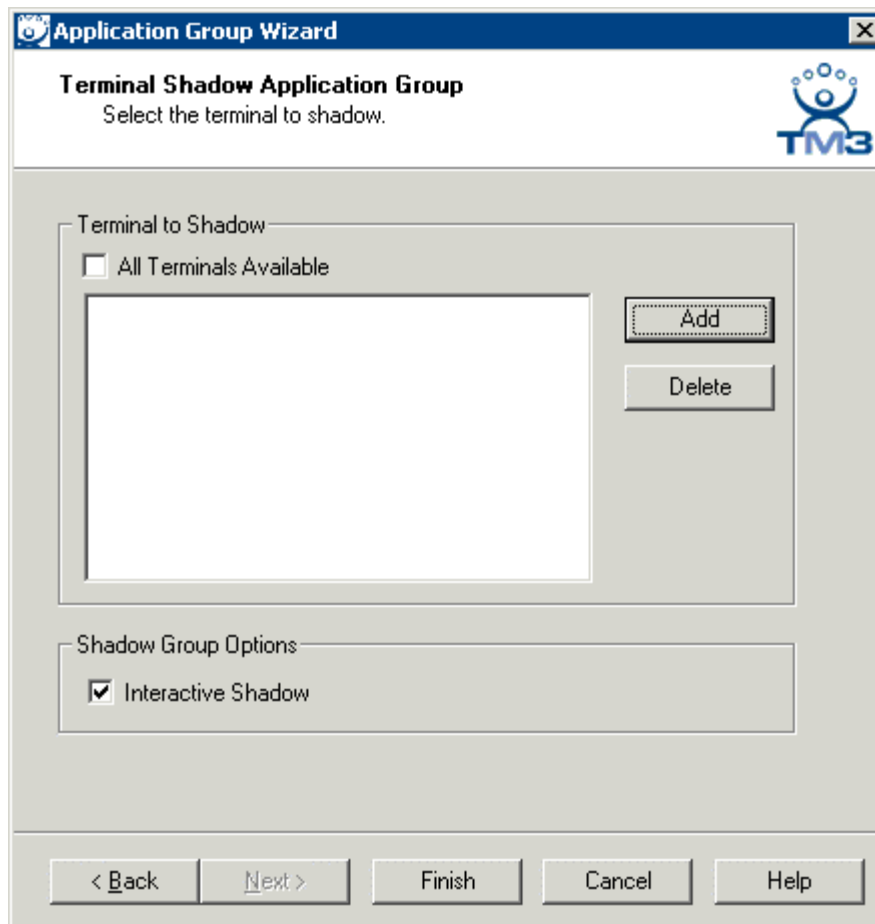
The Terminal Shadow Application Group page allows the selection of the terminal or terminals to be shadowed.

The screenshot shows a dialog box titled "Application Group Wizard" with a sub-header "Terminal Shadow Application Group" and the instruction "Select the terminal to shadow." The dialog features a "Terminal to Shadow" section with a checked checkbox for "All Terminals Available" and an empty list box. To the right of the list box are "Add" and "Delete" buttons. Below this is a "Shadow Group Options" section with a checked checkbox for "Interactive Shadowing". At the bottom, there are five buttons: "< Back", "Next >", "Finish", "Cancel", and "Help". The TM3 logo is visible in the top right corner of the dialog.

Terminal Shadow Application Group – All Terminals Available

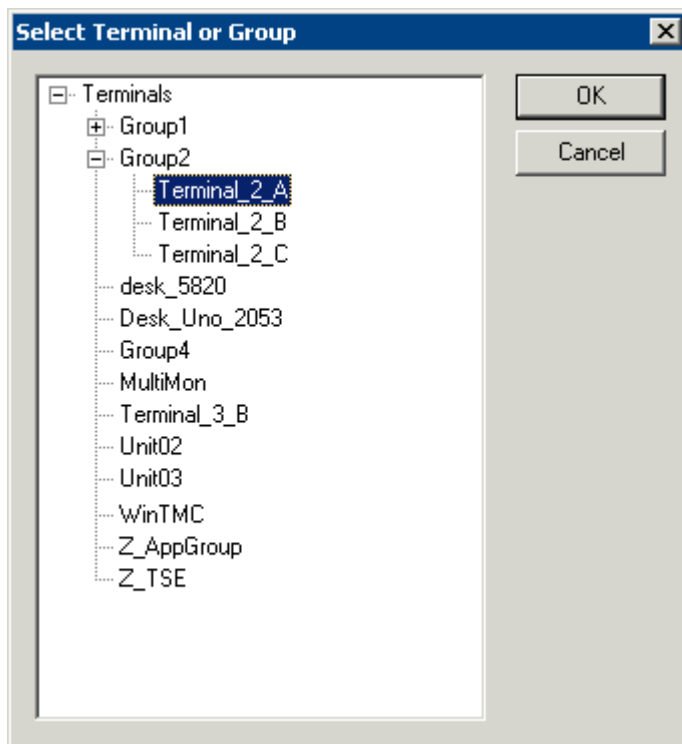
By default the Shadow Group is configured to allow all terminals to be shadowed.

Unselecting the **All Terminals Available** checkbox will allow the designation of specific terminals.



Terminal Shadow Application Group –Select Terminals

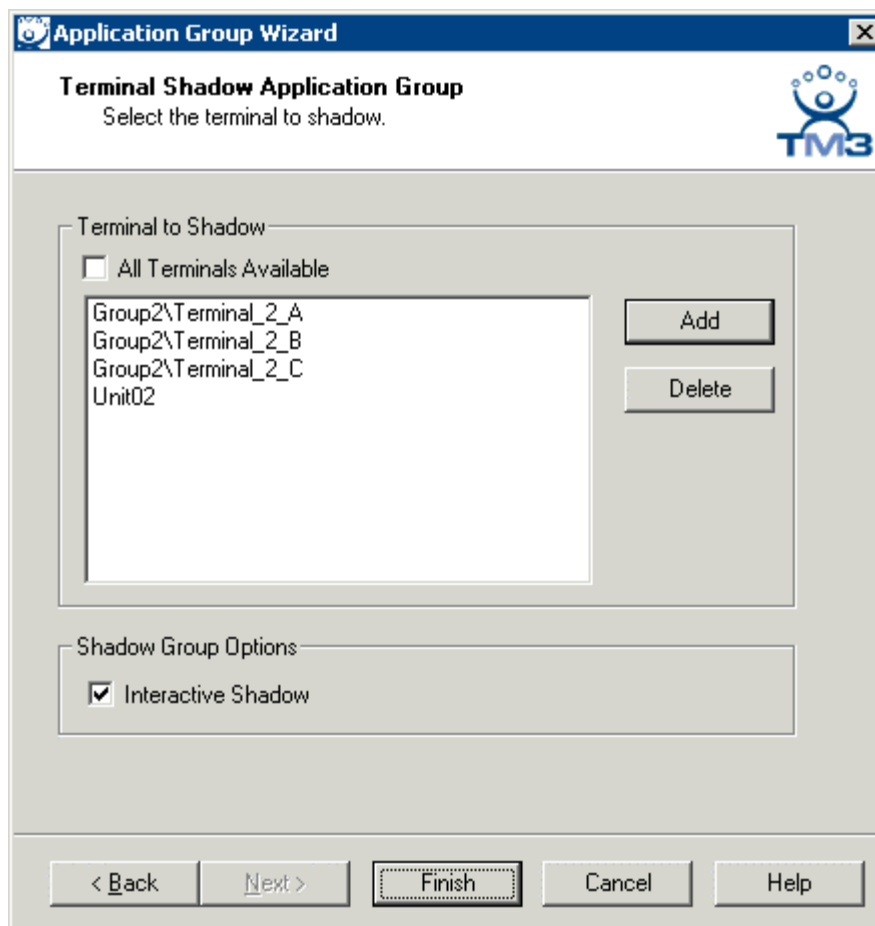
Select the **Add** button to launch the terminal selection window.



Select Terminal or Group Window

Select a terminal for shadowing by highlighting it in the **Select Terminal or Group** window and selecting the **OK** button. The window will close after each selection.

To add multiple terminals repeat the process by selecting the **Add** button on the **Terminal Shadow Application Group** page.



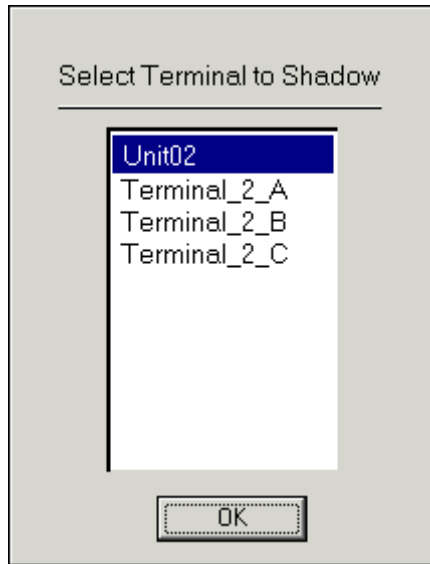
Terminal Shadow Application Group – Selected Terminals

The Terminals to Shadow textbox will display the terminals added to the list.



Shadow Selection Screen

When a terminal launches a Shadow Application Group that has multiple members a **Select Terminal to Shadow** window will be displayed to allow the selection of the terminal to shadow.



Terminal Selector

Highlight the desired terminal and select the **OK** button.