



InTouch Application Deployment

Use the **F1** button on any page of a ThinManager wizard to launch Help for that page.

Visit www.thinmanager.com/TechNotes/Intro/Manuals.shtml to download the full Manual or the ThinManual.

Note: This Tech Note is about a non-ACP product and is provided because of customer requests. It is not a replacement for information from the application vendor.

InTouch View

It is recommended that each user of Wonderware InTouch should run View pointing to a unique folder containing the InTouch application files instead of sharing one application folder for separate users.

There are two ways to point to the desired folder.

Recent Folder Method

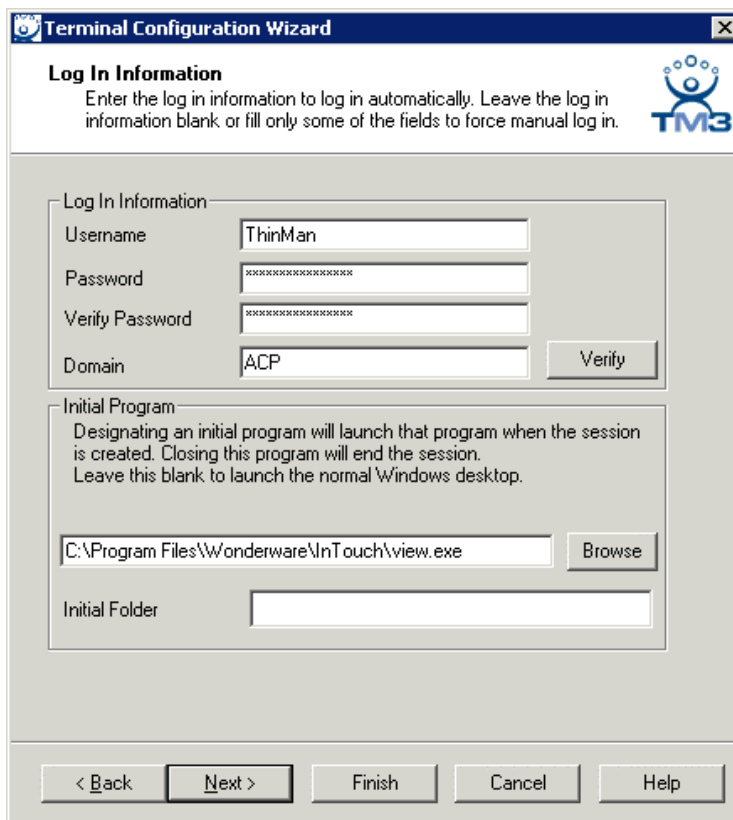
Wonderware requires that a user select a project folder containing the application files before View is run for the first time. This is usually done by

- Opening InTouch
- Selecting **Tools>Find Applications** and browsing to the desired folder and adding it to the application list
- Selecting the application folder, and launching WindowMaker or WindowViewer to load the application.
- The next time the user can just launch WindowMaker or WindowViewer and it will use the last folder selected

Automatic Launching

Once the user is associated with a Wonderware application folder you can use the Initial Program or AppLink to launch View by adding the path to view.exe in the Program Path field.

When View is launched it will use the previously selected application folder.



Terminal Configuration Wizard

Log In Information
Enter the log in information to log in automatically. Leave the log in information blank or fill only some of the fields to force manual log in.

Log In Information

Username:

Password:

Verify Password:

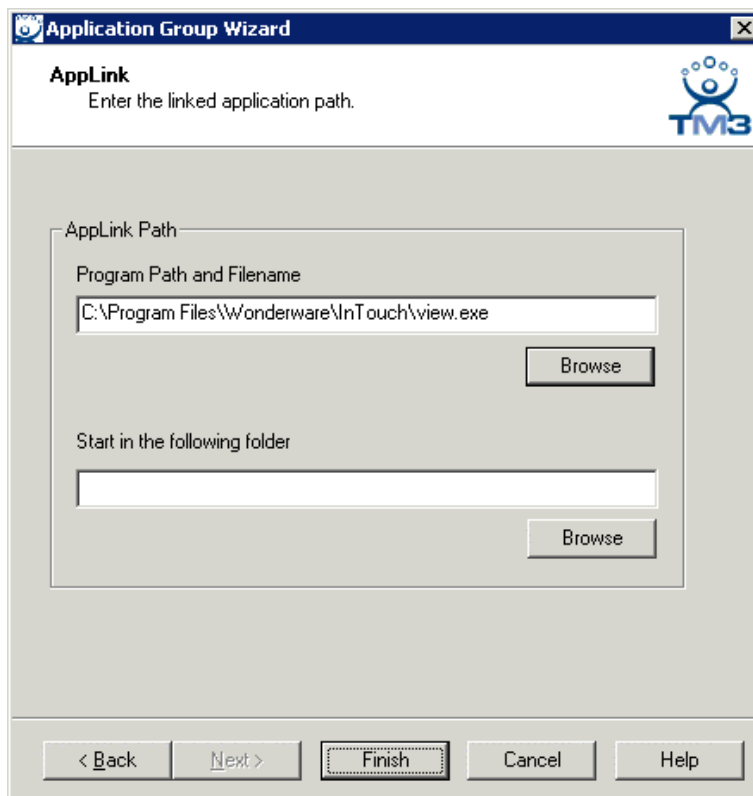
Domain:

Initial Program
Designating an initial program will launch that program when the session is created. Closing this program will end the session. Leave this blank to launch the normal Windows desktop.

Initial Folder:

< Back Next > Finish Cancel Help

Initial Program in the Terminal Configuration Wizard



Application Group Wizard

AppLink
Enter the linked application path.

AppLink Path

Program Path and Filename

Start in the following folder

< Back Next > Finish Cancel Help

AppLink In an Application Group



Application Folder Path Method

If one has few users and few terminal servers it may not take long to log in as each user and select the needed folder on each terminal server to get the application folders selected. However if there are many users and several terminal servers this can be time consuming.

A ThinManager Ready thin client will launch View with a specific folder if the path to View is followed by a space and the path to the application folder in the AppLink Path and the Initial Program field.

Example: **C:\Program Files\Wonderware\InTouch\view.exe D:\WWApps\App1**

Note: The space between the paths is important. Sometimes quotation marks may be needed to enclose each string because of spaces in the path, like that in Program Files.

Example: "C:\Program Files\Wonderware\InTouch\view.exe" "D:\WWApps\App1"

Terminal Configuration Wizard

Log In Information
Enter the log in information to log in automatically. Leave the log in information blank or fill only some of the fields to force manual log in.

Log In Information

Username: ThinMan

Password: [masked]

Verify Password: [masked]

Domain: ACP

Initial Program
Designating an initial program will launch that program when the session is created. Closing this program will end the session. Leave this blank to launch the normal Windows desktop.

m Files\Wonderware\InTouch\view.exe E:\WWApps\App1

Initial Folder

Initial Program Path and Application Path

Note: The **Initial Folder** field is not for the application directory but for a working directory like the profile directory.



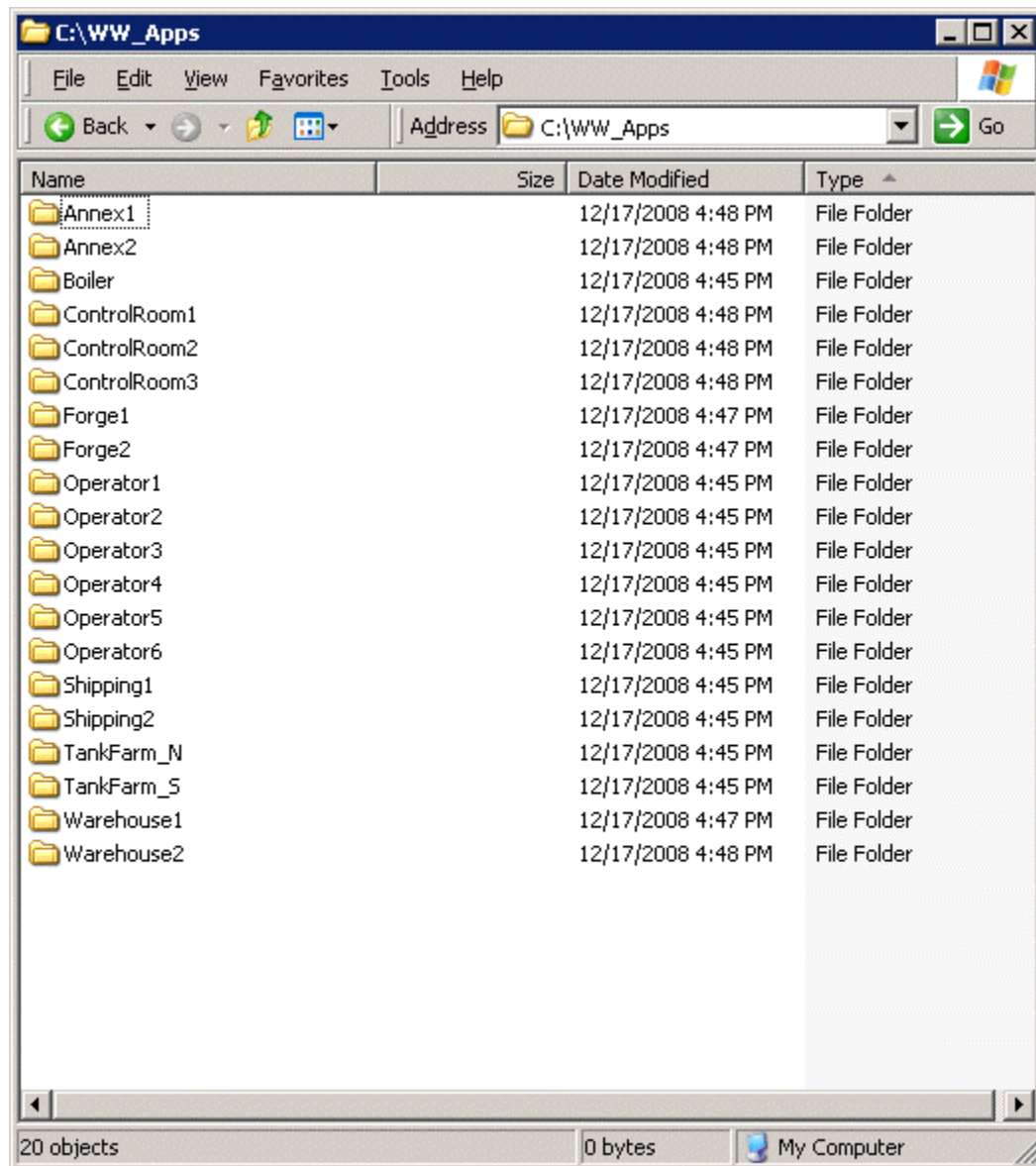
%Username% System Variable Method

Configuring each terminal with an Initial Program that includes the path to View and the path to the application folder is time consuming. Using AppLink and that method means that a Application Group needs to be created for each folder.

A quicker and easier method is to create a copy of the application folder in the name of each user and to create a single AppLink Application Group that uses the %username% system variable as part of the path.

Example: **C:\Program Files\Wonderware\InTouch\view.exe D:\WWApps\%username%**

This way many users can use the same application group and each session will launch View using the folder labeled with the username.



Application Folders for Each User

In this example the thin client logging in as Operator1 will launch View using the application in Operator1 while thin client logging in as TankFarm_N will launch View using the application in TankFarm_N.