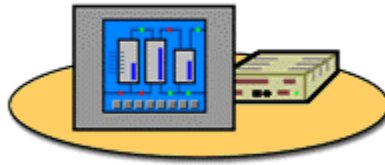




Platform 4 includes more licenses in the core ThinManager product. These* are now included.



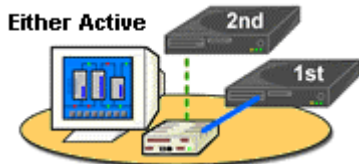
- 1 ThinManager Ready Thin Client**
- 1 Terminal Connection License



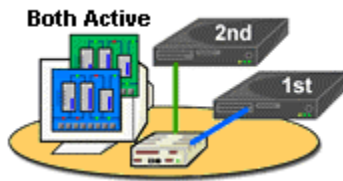
- 1 Thin Client with Touch Screen**
- 1 Terminal Connection License
 - Touch screen modules are free



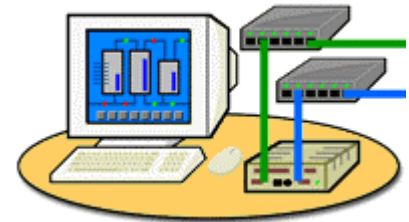
- 1 Thin Client with Sound**
- 1 Terminal Connection License
 - Sound modules are free



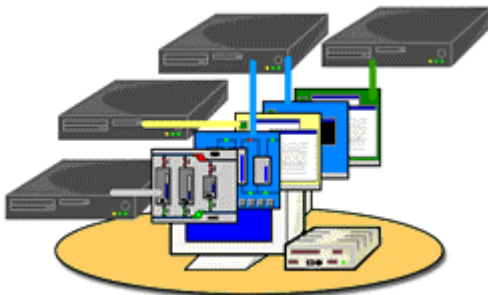
- 1 Thin Client with Failover**
- 1 Terminal Connection License
 - Failover is free



- 1 Thin Client with Instant Failover**
- 1 Terminal Connection License
 - 1* Instant Failover License



- 1 Thin Client w/ Redundant Ethernet**
- 1 Terminal Connection License
 - 1* Redundant Ethernet License



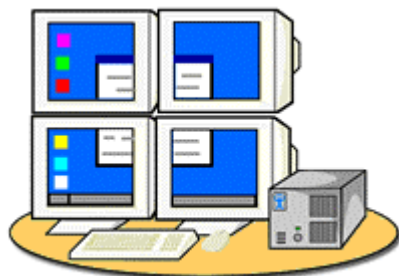
- 1 Thin Client with MultiSession**
- 1 Terminal Connection License
 - 1* MultiSession License



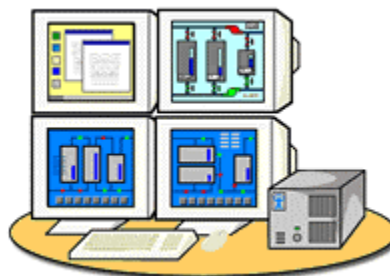
- 1 Thin Client with Smart Session**
- 1 Terminal Connection License
 - 1* SmartSession license per terminal server
 - 1* MultiSession License if using MultiSession



- 1 PC using WinTMC**
- 1 Terminal Connection License
 - 1 WinTMC License
 - or
 - 1 Terminal/WinTMC License



- 1 Thin Client with MultiMonitor 1 Session**
- 1 Terminal Connection License
 - 1 MultiMonitor License (available in 1, 2, 3, 4, & 5-packs)



- 1 Thin Client with MultiMonitor 2 or more Sessions**
- 1 Terminal Connection License
 - 1 MultiMonitor License
 - 1* MultiSession License



- Share Keyboard & Mouse**
- 1 Terminal Connection License per thin client
 - 1* SKM Module per Master



Enterprise Server

Unlimited Terminal Connection Licenses for two ThinManager Servers on one network. As many terminal servers as desired.

Platform 4 now includes* MultiSession, SmartSession, Instant Failover, Redundant Ethernet, Share Keyboard & Mouse.

MultiMonitor and WinTMC are separate.



Enterprise Site

Unlimited Terminal Connection Licenses for unlimited ThinManager Servers at one facility. As many terminal servers as desired.

Platform 4 now includes* MultiSession, SmartSession, Instant Failover, Redundant Ethernet, Share Keyboard & Mouse.

MultiMonitor and WinTMC are separate.

Microsoft TSCALS

Microsoft Licenses Needed:

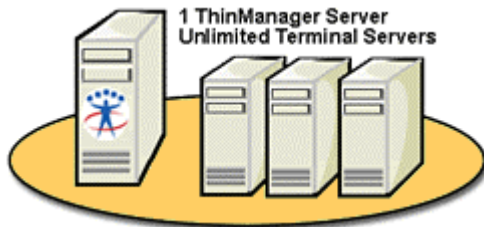
- 1 TS CAL per thin client (Terminal Server Client Access License)
- 1 CAL per thin client (Client Access License)
- Connect to as many terminal servers as desired

Separate Microsoft Licensing

See your Microsoft Vendor

ThinManager Redundancy

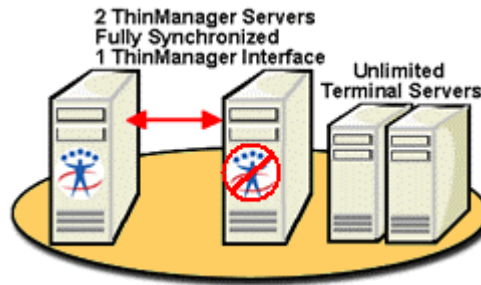
Good



Single ThinManager Server No Redundancy

- One set of licenses
- Thin Clients receive configuration from 1 ThinManager Server
- Configuration sends thin client to any number of terminal servers

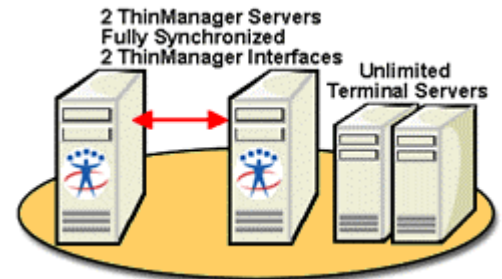
Better



Two ThinManager Servers Mirrored Redundancy

- One set of Mirrored licenses
- Thin Clients receive configuration from either ThinManager Server
- Management and control are limited to Primary ThinManager Server
- Configuration allows thin client to connect to any number of terminal servers

Best



Two ThinManager Servers Full Redundancy

- Two sets of licenses
- Thin Clients receive configuration from either ThinManager Server
- Management and control are available on either ThinManager Server
- Configuration allows thin client to connect to any number of terminal servers



You can
Combine Licenses
as needed

www.thinmanager.com

Enterprise Licensing
includes Full Redundancy