



PRODUCTIVITY FEATURE



VISUALIZATION FEATURE



SECURITY FEATURE

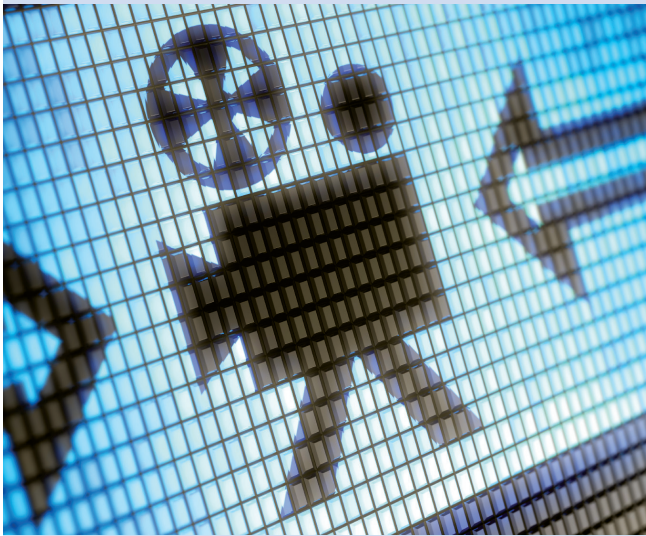


MOBILITY FEATURE

ThinManager®

# CAMERA SUPPORT

Easy setup.  
Multiple viewing options.



Enjoy fast and smooth **HD H.264 video at 30fps.**



**Increased visualization creates a more productive workforce and a safer working environment.**



#### SETUP IS EASY

Just configure the camera with an IP address to add it to your network, define it as a display server, and then deploy it as a window or as part of a group of windows.

#### MULTIPLE VIEWING OPTIONS

Users have the option to choose a single camera display, several cameras with multiple displays, or as an overlay in an existing application. Users can define their own custom layout of the camera overlays or choose from predefined layouts. ThinManager also allows the ability to choose whether or not the IP camera feeds are to be tiled.

#### MANAGE THE BANDWIDTH

If your thin client is equipped with dual Ethernet ports, it is now possible to directly connect an IP Camera into the 2nd Ethernet port on the thin client. This greatly decreases network activity, instantly freeing up more bandwidth.

#### ADVANTAGES

IP camera support gives users the ability to see around the corner and through the walls. Use it to expand the line of vision in a production process or as a security tool to monitor every part of a facility at the same time. ThinManager's customizable IP camera support makes it easy to define and deploy a wide variety of readily available cameras.