

Automation Control Products

THIN MANAGER

Simplified delivery of centralized applications and information to virtually any device.



ThinManager is about management tools that go beyond your current capabilities and a feature set that will make things you already do, a whole lot easier.

DELIVERY. EASE OF USE. COMPLETE SOLUTION.



THINMANAGER DELIVERS

ThinManager allows you to easily manage the configuration of end-user terminals and the delivery of all your centralized applications and content to those terminals.

THINMANAGER PROVIDES EASE OF USE

ThinManager's wizard-based configuration allows administrators to easily set up advanced functionality for end-user devices such as PCs, thin clients and mobile devices. ThinManager also makes it easy to customize the content delivered to the terminal based on who is logged in and what role they play in your work environment.

THINMANAGER IS A COMPLETE SOLUTION

ThinManager is the only platform that manages both the server side and the terminal side of modern computer networks offering full server failover and redundancy options to keep your resources in an "always on" state, reducing downtime and lowering your Total Cost of Ownership.

ThinManager

RELEVANCE

Industrial location-based
mobility solution.



RELEVANCE PROVIDES MOBILE ENVIRONMENTS THE ABILITY TO DELIVER THE RIGHT APPLICATIONS TO THE RIGHT PERSON AT THE RIGHT TIME & PLACE.



R E L E  A N C E

Deliver your applications to mobile devices* as easy as you deliver them to PCs and thin clients.

*Requires iTMC mobile client available from the Apple App Store or aTMC mobile client available from the Thinmanager Downloads page.

Relevance extends your ability to manage every device by bringing a powerful mobile administration toolset to the award-winning ThinManager thin client management platform. Applications and information can now be delivered based on location. This will allow your staff the option to have information automatically become available on mobile devices upon entering a defined location or scanning a location ID. Then, upon leaving the area, the information will be removed from the screen or hidden unless accessed by an authorized user.

The Shadow feature allows users to share screen information with other devices based on proximity or login. For instance, an administrator can see the same screen on his mobile device that a technician is accessing on a computer without having to walk across the plant, look over the shoulder or switch seats. The access can be view only or interactive.

ThinManager Relevance is ultra-secure as all data is stored on secure central servers and no data is saved locally. If a device is lost or stolen, no information or administrative paperwork is compromised.

ThinManager

RELEVANCE

Use location resolver technology to manage your modern mobile workforce.



USE QR CODES, NFC, BLUETOOTH, WIFI AND GPS TO DEFINE LOCATIONS AND SECURELY DELIVER APPLICATIONS TO MOBILE DEVICES.



RELEVANCE

Location resolver technology is what sets Relevance apart from all other mobility solutions.

*Requires iTMC mobile client available from the Apple App Store or aTMC mobile client available from the Thinmanager Downloads page.

Relevance uses five different kinds of location resolver technologies to allow you to completely define your workspace as a location-based mobile facility. Once you have defined locations, you can deliver applications and content to PCs, thin clients and mobile tablets based on where they are located. This allows administrators to secure tethered workstations and mobile devices by delivering applications and content only to specific areas where that content is allowed to be accessed.

Location setup and configuration are easily managed using the ThinManager Relevance wizard-based setup tools. Administrators have full control over how locations and users are defined so that every person who interacts with the system only receives the content they are authorized to access.

Extra security can be easily employed by creating geofences. Geofences can be configured by combining two resolver technologies such as WIFI and QR codes. For instance, by nesting a QR code within a specific WIFI access point, administrators can deliver content when that code is scanned from within the WIFI access point and take away and/or deny access to the content when a person leaves the WIFI access point. Other resolver technologies can be combined to create geofences as well.

ThinManager®

HOW IT WORKS



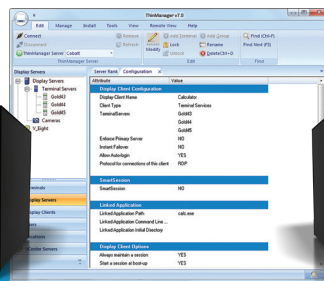
Increased Security.
Unprecedented Control.
Less Expensive Hardware.
Familiar Apps & Tools.
Mobile Solution.

GET UNPARALLELED FLEXIBILITY FOR YOUR COMPUTER NETWORKS BY CENTRALLY MANAGING EVERY THIN CLIENT, PC AND MOBILE TABLET FROM ONE POWERFUL SOFTWARE PLATFORM.



- Access multiple sessions and use multiple monitors on a single thin client.

✓ Compatible with RDS, Hyper-V, Citrix & VMware



Remote Desktop Servers



Virtual Resources



- Includes support for IP camera feeds.



- Manage and deliver virtual desktops while running PCs as thin client devices.



- Access applications based on what is assigned to the workstation or the user.

Deliver existing applications to any device!

- Deliver content to the right person at the right time & place.



- Get mobile access to applications specific to your role.

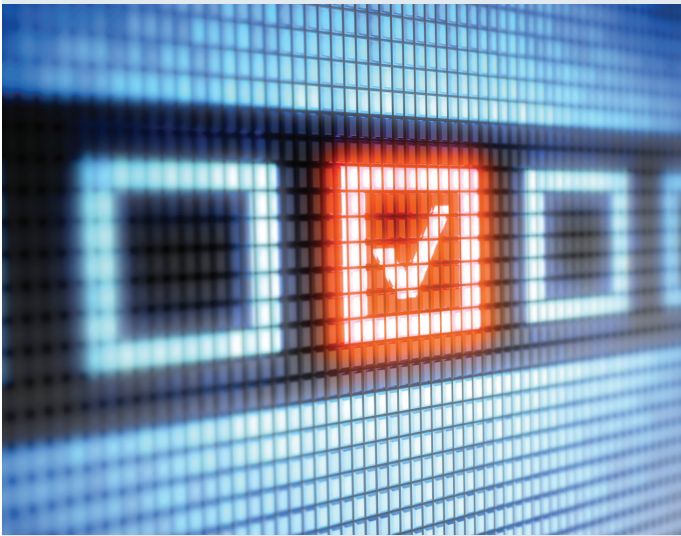


RELEVANCE

ThinManager®

MULTI SESSION

Deliver multiple sessions from various sources to any terminal. Layer or tile sessions on the screen for superior visualization.



MULTISESSION IS THE CORE TECHNOLOGY THAT MAKES THINMANAGER THE “GO TO” SOLUTION FOR ACCESS TO MULTIPLE RESOURCES FROM VIRTUALLY ANY DEVICE.



Having access to multiple applications through a single terminal makes your workforce more productive and agile.

ThinManager's MultiSession feature allows administrators to deliver applications and resources from various sources such as Remote Desktop Servers (terminal servers), VMWare, Hyper-V and even Citrix servers to virtually any end-user device. ThinManager creates a unique session for each user authorized to access a centralized application.

MultiSession easily manages these sessions allowing end users to have access to multiple applications through a single terminal. Users no longer have to worry with applications that compete for resources on a single PC or working on more than one PC at a time to compensate for power hungry programs. ThinManager can deliver everything you need through a single terminal.

ThinManager®

MULTI MONITOR

Up to 5 Monitors.
Countless Configurations.
Touchscreen Support.

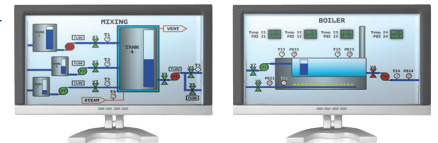


SPAN A SINGLE SESSION ACROSS MONITORS,
DISPLAY A DIFFERENT SESSION ON EACH MONITOR,
OR PRESENT A COMBINATION OF THE TWO.



ThinManager Ready thin client with 5 video ports

2 monitors spanning a single application



3 monitors showing individual sessions



Increase visualization and expand your view by displaying individual applications on their own monitor or span large applications across several monitors through a single terminal.

MultiMonitor allows ThinManager users to display up to five screens on a single thin client. MultiMonitor can be used to span sessions across monitors and/or run individual or multiple sessions on each monitor. Touchscreens are also supported.

Users can place monitors at any location within the virtual space and can even combine spanning and multiple sessions on a single thin client. Users can use two adjacent monitors to span a single session while two other monitors are each used to display sessions running on other servers. Wizards make configuring all of the screens a snap.

MultiMonitor supports spanned resolutions up to 8192 x 8192 with 64K colors for MS Server 2012 and newer. MS Server 2008 and prior are limited to a spanned resolution of 4096 x 2048.

ThinManager®

TERM SECURE

Securely deliver content through
user/role-based management.



With TermSecure, an administrator can control user access with a ThinManager user name and password. Set up permission groups so that wherever users go, their applications follow.

SERVE AND PROTECT As a user moves from client to client, TermSecure logs them in and instantly reconnects to the existing terminal server sessions and virtual desktops while programs follow and instantly appear on screen, ready to use. When the user walks away, they are automatically logged out and the client returns to its original function.

AUTHENTICATE Identify yourself at a TermSecure enabled device using an RFID proximity card (short or long range), a USB flash key, or login manually. Combine authentication methods and greatly increase security.

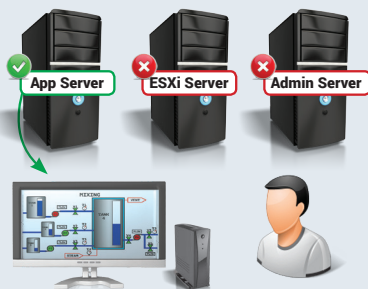
CONTROL Administrators control user access to terminals and applications through group permissions and terminal scheduling. Limit a specific user to a weekly, daily or hourly schedule or disable the terminal itself at any time you choose.

EXTEND Drop our ActiveX control into your applications and you can program in terminal and user specific functionality, including session switching, event logging, and terminal status and management.

SAVE Prevent a single unauthorized access to your systems and you might also be preventing a downtime event that more than pays for this software. Save a minute or more each time you access applications from a client over the life of your systems and now you have money in the bank.

USER CONTROL

The end user can access only the applications and servers that he has been granted.



SUPERVISOR CONTROL

As the supervisor arrives and badges in, the applications and servers that are granted to him are visible on the terminal.



BIOMETRIC SECURITY

ThinManager supports biometric security integration for fingerprint recognition devices. Add yet another level of security by having operators, users and administrators scan their finger to have access to a specific set of applications.



ThinManager® Mobile Apps

Run existing applications
through a mobile tablet
without writing code.



THINMANAGER HAS CREATED A TOOL FOR
MOBILITY THAT ALLOWS USERS TO CONNECT AND
ACCESS THEIR RESOURCES ON THE MOVE.

TURN YOUR MOBILE TABLET INTO A THIN CLIENT

ThinManager provides a client app for iOS and Android devices, turning it into a full blown thin client. ThinManager's iTMC and aTMC lets you run a session of your HMI or access your terminal server from a tablet device.

Configuring these apps as a thin client is just as easy to setup as a regular desktop terminal with ThinManager. To connect, simply enter a primary ThinServer IP address and gain access to your authorized sessions.

Run your HMIs and other apps on the move. No need to develop a mobile version of your important applications. **Enjoy a truly mobile thin client device.**

iTMC and aTMC supports popular ThinManager features like:

- TermSecure
- The new Relevance location-based mobile platform
- ActiveX Control
- Bar Code Scanning
- MultiSession
- Client to Client Shadowing
- Instant Failover
- Full Display Client overrides (Resolution, Login, Color Depth, etc).
- Disabling of Terminal Servers
- Full range of function keys, special keys (e.g. control, alt, F1, F2, etc).
- Custom background settings for company logo, etc.

Being mobile means
being more productive.



ThinManager[®]
WinTMC

Operate your PC
like a thin client.

PC = Thin Client = Lower TCO



WinTMC will allow you to manage your PCs and host applications on Terminal Servers, simplifying network-wide updates and significantly reducing your TCO.

THINMANAGER[®] PROVIDES A COMPLETE SOLUTION FOR ORGANIZATIONS THAT USE PCS AS PART OF THEIR REMOTE DESKTOP SERVICES NETWORK.

WinTMC BRINGS THINMANAGER READY CLIENT FUNCTIONALITY TO YOUR WINDOWS PC

You can now use versatile ThinManager functions such as SmartSession, MultiSession, AppLink, Instant Failover, and other features on your Windows PC. You will now have more options when managing, configuring, and designing your entire Terminal Server Network.

REMOTELY MANAGE YOUR PCS

By centrally configuring WinTMC, you can also directly manage all of your networked PCs directly from ThinManager. Network Administrators can use ThinManager's shadowing capability to remotely view and control the PC's desktop even when the user does not have an active terminal server session.

RUN APPLICATIONS ON YOUR PC OR TERMINAL SERVERS

Some users may have the need to run local applications. With WinTMC they can easily switch between applications running locally and WinTMC terminal server sessions.

WinTMC PROVIDES THE FLEXIBILITY TO UPGRADE OVER TIME

WinTMC can be configured to act just like a ThinManager Ready thin client. This is ideal for gradually moving from PCs to dedicated ThinManager Ready thin clients, providing flexibility in your IT budget to invest in new thin client hardware as needed.

ThinManager®

SMART SERVER

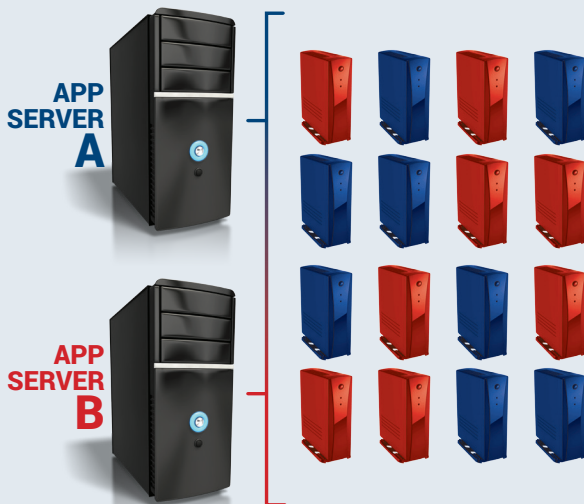
Give Your Centralized Servers a
Higher IQ and a Safety Net.

Server Load Balancing.
Auto-Configuration.



SmartSession determines the best server for each client session.

Instant Failover runs sessions on a secondary server(s) to prevent downtime from server failure.



AS RESOURCES ARE USED, SMARTSESSION DECIDES WHERE TO ASSIGN TERMINALS TO KEEP THE REMOTE DESKTOP SERVERS RUNNING AT PEAK EFFICIENCY.

SMARTSESSION

So you have numerous thin clients in your medical facility running important applications. These applications require multiple Remote Desktop Servers to support all of your thin clients. How do you decide which clients connect to which Remote Desktop Services servers? Why not let ThinManager decide for you?

When you use the SmartSession feature, you add the power of load balancing. Rather than manually configuring your clients to connect to one server or another, let ThinManager decide, in real time, exactly which terminal server is most available. SmartSession takes differing CPU levels, memory levels, and current session information into account to calculate the best server for your next client session.

If you add clients and require more server power to support them, simply drop another Remote Desktop Server onto your SmartSession group and it will be balanced with the others and ready to receive client sessions. Now there are no more complicated configurations to manage.

Use the queuing feature to minimize the server stress and disk trashing that can occur when many clients try to start sessions on a server simultaneously. Queuing brings clients on in an orderly fashion and keeps your systems running smoothly.

INSTANT FAILOVER

ThinManager also provides the added safety of instant server failover. If a server does go offline, ThinManager immediately switches all clients to the backup without interruption.

ThinManager®

CAMERA SUPPORT

Easy setup.
Multiple viewing options.



Enjoy fast and
smooth **HD H.264**
video at 30fps.



INCREASED VISUALIZATION CREATES A MORE
PRODUCTIVE WORKFORCE AND A SAFER
WORKING ENVIRONMENT.

SETUP IS EASY

Just configure the camera with an IP address to add it to your network, define it as a display server, and then deploy it as a window or as part of a group of windows.

MULTIPLE VIEWING OPTIONS

Users have the option to choose a single camera display, several cameras with multiple displays, or as an overlay in an existing application. Users can define their own custom layout of the camera overlays or choose from predefined layouts. ThinManager also allows the ability to choose whether or not the IP camera feeds are to be tiled.

MANAGE THE BANDWIDTH

If your thin client is equipped with dual Ethernet ports, it is now possible to directly connect an IP Camera into the 2nd Ethernet port on the thin client. This greatly decreases network activity, instantly freeing up more bandwidth.

ADVANTAGES

IP camera support gives users the ability to see around the corner and through the walls. Use it to expand the line of vision in a production process or as a security tool to monitor every part of a facility at the same time. ThinManager's customizable IP camera support makes it easy to define and deploy a wide variety of readily available cameras.

ThinManager®

LICENSING

Complete Platform.
Scalable Solution.
ROI Tools.



UNIQUE HARDWARE ENABLING TECHNOLOGY.

SCALABLE THIN CLIENT MANAGEMENT SOLUTION.

XLi STANDARD LICENSING (5-Packs, 10-Packs, 25-Packs)

MultiMonitor, TermSecure, PXE Boot, WinTMC, MultiSession, SmartSession, Virtual Machine Management, iOS Apps, AppLink, Automatic Failover, Instant Failover, Terminal Shadowing, Remote Management, Redundant Ethernet, Touchscreen Support, Shared Keyboard & Mouse and more.

ENTERPRISE LICENSING

Server Licensing includes licenses for 2 ThinManager Servers, providing redundancy at a single location. This allows for an unlimited number of thin clients and terminal servers on a single network.

Site Licensing provides a single license that can be installed on an unlimited number of ThinManager Servers at a facility. This license provides for redundancy and departmentalization of ThinManager Servers. Enterprise Site extends the enterprise server licensing to all networks at a single facility.

RELEVANCE LOCATION-BASED MOBILE SOLUTION

Easily add location-based functionality to your ThinManager installation.

MUNICI-PACK LICENSING

This licensing model allows for municipalities to allocate their licensing across multiple sites and facilities within a single municipal jurisdiction.

REDUNDANCY

ThinManager offers 2 options for redundant servers:

Mirrored Redundancy synchronizes a pair of servers, one acting as a primary server while the other acts as a "view only" interface.

Full-Redundancy uses a redundant pair of servers storing configurations on both with a fully accessible ThinManager GUI.

Run the numbers...
download our ROI
Calculator.

We have created a tool to help you calculate the savings when converting to ThinManager thin client technology.

Download the free tool today!

www.thinmanager.com/roi

ThinManager®

PLATFORM MAINTENANCE

Free Version Upgrades.
Expert Phone Support.
Exclusive Discounts.



PLATFORM MAINTENANCE IS A FULL-FEATURED PLAN TO ENSURE THAT YOUR THINMANAGER SYSTEM EVOLVES WITH YOUR FACILITIES.

YOUR SOFTWARE IS ALWAYS UP-TO-DATE.

Providing you with the most recent software releases and upgraded features allows you to stay ahead of the pack. When you are enrolled in PMP you receive free upgrades to ThinManager, ThinServer, ACP firmware, terminal capabilities database, and touchscreen drivers.

WE PROVIDE A SINGLE SOURCE FOR ALL OF YOUR SUPPORT NEEDS.

Our goal is to minimize downtime and maximize efficiency. That's why our tech support department is run by the same people who develop ThinManager. Your call will be directed quickly to a friendly, knowledgeable member of our tech support team to assist you with ThinManager in order to increase your daily output.

WE ARE HERE TO WORK WITH YOU EVERY STEP OF THE WAY.

From purchase and license activation, to installation and configuration support, we provide training, consultation, and updates to help you achieve the highest possible return on your investment. We are constantly offering live webinars and training videos to maximize your operational efficiency. You even receive discounts on ACP ThinManager events.

WE SUPPORT YOUR COMPANY BY SUPPORTING OUR PRODUCT.

With 15 years of experience developing and supporting the ThinManager software platform, we know how to best provide timely and professional assistance. Support is available via telephone or Email. By contacting our support team for your ThinManager software or hardware related issues, you will have access to the best assistance money can buy.

Get the most from your investment and stay productive by always having the latest tools.

The ThinManager Platform Maintenance Plan entitles a customer to one year of technical support. Phone support is available between 9 A.M. and 5 P.M. EST, Monday through Friday, normal holidays excluded. After-hours and on weekends, a Platform Maintenance Plan customer can leave a voice message for support or send an e-mail. An ACP technical support representative will return the call on the next business day. ACP supports ACP ThinManager, ThinManager Ready hardware, and ACP Thin Client systems. We reserve the right to refer terminal server application issues to the appropriate application vendor. Customers who have a Platform Maintenance Plan receive free upgrades to ThinManager, ThinServer, ACP firmware, terminal capabilities database, modules, and touchscreen drivers.