



ThinManager Installation

Use the **F1** button on any page of a ThinManager wizard to launch Help for that page.

Visit www.thinmanager.com/TechNotes4/01_Intro/Manuals.shtml to download the manual, manual chapters, or the abridged ThinManual.

This is a short version of the ThinManager 4.0 Installation. Greater detail is found at http://www.thinmanager.com/TechNotes4/01_Intro/Manual/03_Installation.pdf

Standard ThinManager Installation in Windows

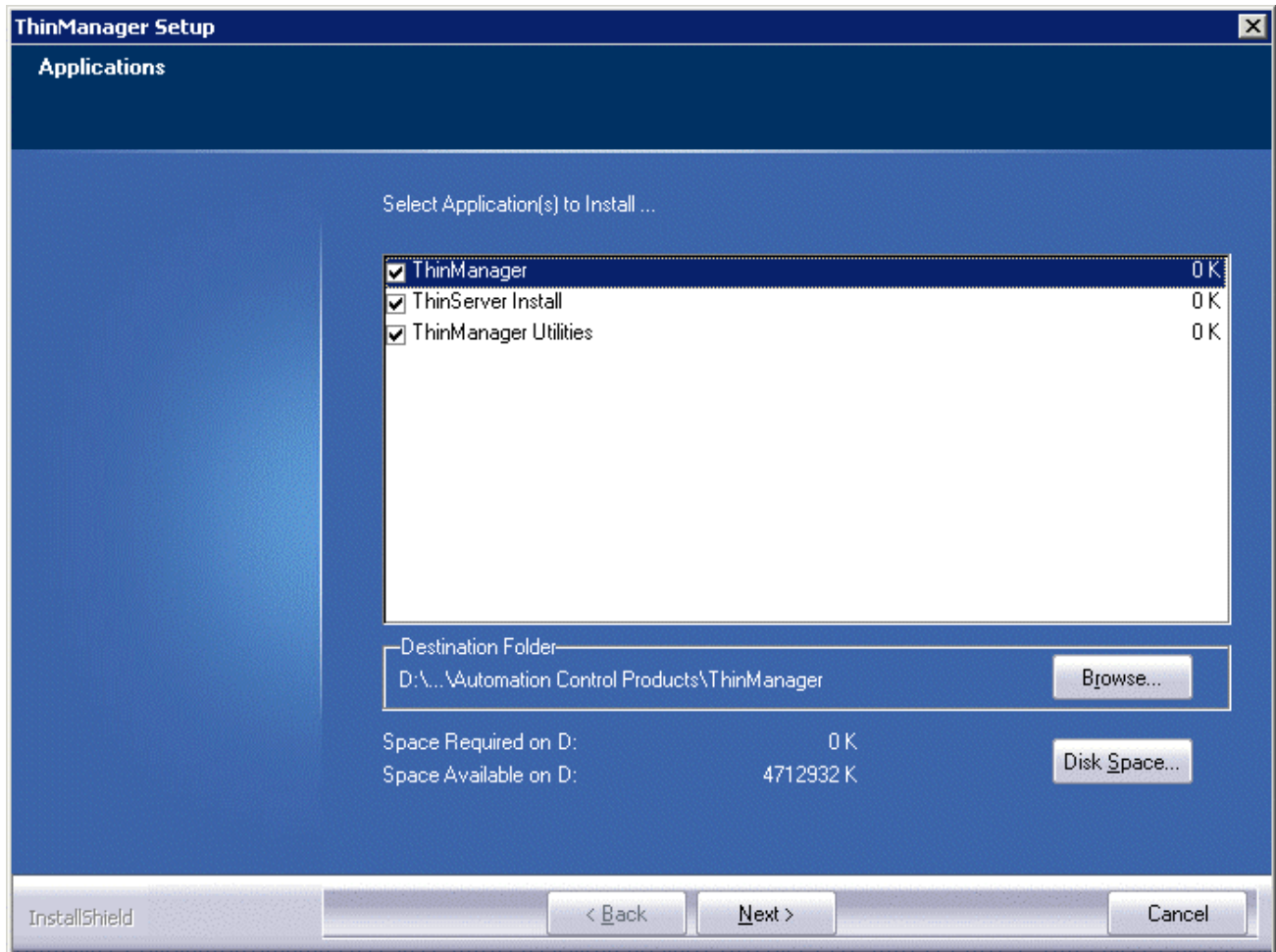
ThinManager can be installed on almost any computer, from a Windows 2000, 2003, or 2008 server; to a workstation (NT 4.0 SP5 and later). Please use the **Add/Remove Programs** to install in the **Install Mode**. Failure to use the **Install Mode** can prevent an application from working properly.

To install ThinManager:

- Select **Start > Settings > Control Panel > Add/Remove Programs** to open the **Add/Remove Programs** dialog box
- Select the **CD or Floppy** button on the **Add/Remove Programs Properties** dialog box to open the Installation wizard.
- The wizard will prompt for the insertion of the ThinManager CD. When the CD is inserted, the wizard will ask for the path to the setup program.
- The ThinManager CD has 4 folders.
 - **Documentation** – This folder contains a copy of the documentation in *.pdf format.
 - **Terminal ActiveX** – This folder contains the Terminal Monitor ActiveX and companion documentation.
 - **ThinManager**– This folder contains the ThinManager setup program.
 - **WinTMC** – This folder contains the WinTMC setup program.
- Browse to the **setup.exe** file in the ThinManager folder to install ThinManager.
- Once the ThinManager setup program is selected, select **Next** to continue the installation.
- The ThinManager Setup Wizard will lead the user through the installation process.
- Read the End-User Licensing Agreement (EULA). If you agree to the conditions, select **Yes** to continue.
- The installation wizard will display the components of the ThinManager installation. Although ThinManager appears to be a seamless program, it has two major components and utilities.
 - **ThinManager** is the graphic user interface. It is installed to view and control the program.
 - **ThinServer** is the engine that drives the program. It is a vital component that needs to be installed with ThinManager to allow ThinManager Ready thin clients to boot and be configured. ThinServer is the component that requires licensing. It is separated from ThinManager in the installation to allow additional instances of ThinManager to be installed for remote administration.



- **ThinManager Utilities** includes tools like the touch screen calibration program. These utilities need to be installed on every terminal server that have clients with touch screens connected to them.



Application Selection

Note: If touch screens are being used with ThinManager Ready thin clients, the **ThinManager Utilities** program needs installed on every terminal server to provide the **Calibrate Touch** program for connected thin clients.

- The **Browse** button will allow the user to change the path to the folder where ThinManager will be installed.
- Check the desired components and select **Next**.
- When the wizard has finished select the **Finish** button.
- After the ThinManager Setup wizard has finished, one needs to complete the installation through the Microsoft dialog boxes.
- Select Finish to complete the installation.

The installation of ThinManager is not complete until it has been licensed. See http://www.thinmanager.com/TechNotes4/03_Licensing/MasterLicenses.pdf for details.